

# REGION I CONFERENCE

---



**NASPA REGION I CONFERENCE**

**NOVEMBER 13-16, 2016**

*Burlington, Vermont*

**SHERATON HOTEL  
BURLINGTON, VT**



**NASPA**

Region I



INFORMATION

Dear Friends & Colleagues,

On behalf of the Region I Conference Committee and the Advisory Board, welcome to Burlington, Vermont and the 2016 NASPA Region I Conference! We are excited to have you with us and hope you are looking forward to a great conference experience.

The conference committee has worked to create a conference program that features a variety of timely topics that will appeal to professionals across all levels. We are confident that each attendee will find sessions and events that are relevant to their work, and will allow you all to engage with each other in a meaningful way. We are also proud to welcome a number of special guests and conference speakers, and we are grateful to them for taking the time to share their knowledge and experience with our region.

This past year has been challenging for many of our campuses, and for higher education as a whole. Our students and our institutions are dealing with new and complex issues, and student affairs professionals are being called to assist in new ways. We hope that your time here in Burlington will allow you to find support from colleagues, and that we are able to engage in conversations that will both education and rejuvenate us.

As you take a look at the conference schedule and start to frame your conference experience, we offer a few recommendations for making the most of the NASPA Region I Conference:  
Attend as many sessions and events as possible. While many of us use the conference as a way to connect with friends, the events and sessions offered here will enhance your work as a student affairs professional. Additionally, it’s a great way to support our colleagues who have given their time and expertise as presenters!  
Meet new people. If you’re a conference veteran, please reach out to our new professionals and graduate students. If this is your first conference, please do the same! Region I is a welcoming place, and everyone is excited to meet new colleagues and friends.

We want to thank the members of the Regional Advisory Board, the various state boards, the Knowledge Community chairs, and the countless number of volunteers who give their time and energy to Region I. Our Region is strong and vibrant thanks to their service.

We especially want to thank this year’s Regional Conference Committee. These individuals have dedicated a tremendous amount of time and energy to ensure that Burlington is our best conference yet.

We are confident that this year’s conference will not disappoint. We hope that you are able to learn, engage, connect, and leave with new knowledge and a renewed sense of purpose.

All the best,

Beth Moriarty, Ed.D.  
Region I Director, NASPA Board of Directors  
Director of Residence Life and Housing  
Bridgewater State University

Meghan Kenney  
2016 Region I Conference Chair  
Assistant Dean, New Student Programming  
Massachusetts Institute of Technology

CONFERENCE COMMITTEE

Meg Kenney  
Massachusetts Institute of Technology  
Conference Chair

Alana Anderson  
Bentley University  
Pre-Conferences Chair

Alex Cabal  
Wentworth Institute of Technology  
Volunteers & Outreach Chair

Barbara LoMonaco  
Salve Regina University  
Senior Student Affairs Officer (SSAO) Liaison

Cameron Smith  
Merrimack College  
Past Chair

Colleen Lubin  
Southern New Hampshire University  
Undergrad Liaison & S.A.L.T. Conference Chair

David Golden  
Merrimack College  
Registration Chair

Erin Baker  
University of Vermont  
Local Arrangements Chair

Erin Twomey  
Quinnipiac University  
Programs Chair

Jennifer Jensen  
Salve Regina University  
Entertainment Chair

Jennifer Forry  
Newbury College  
Silent Auction Chair

Joshua Peipock  
Rhode Island School of Design  
Marketing & Publicity Chair

Kyndra Angell  
Boston College  
Special Events Chair

Laura Flynn  
Massachusetts College of Art & Design  
Intern Chair

Matthew Heiser  
Wentworth Institute of Technology  
Awards Chair

Matthew Petersons  
Southern New Hampshire University  
Corporate Sponsors Chair

Stephanie Gonzalez  
Williams College  
Secretary, Treasurer, & Evaluations Chair

Steven Rossi  
Middlesex Community College  
Social Media Chair

Graduate Interns

Caitlin Scheckel  
Boston College

Colleen Calcagni  
Salem State University

LaDarius DuPree  
University of Vermont

Prithak Chowdhury  
University of Vermont

PAST REGION I VICE PRESIDENTS/ REGIONAL DIRECTORS

1965-1968	William L. Swartzbaugh
1968-1969	Gilbert MacDonald
1969-1970	William F. Field
1970-1971	John E. Shay, Jr.
1971-1973	Richard F. Stevens
1973-1976	Donald P. Hardy
1976-1977	Richard Wotruba
1977-1980	Dennis Golden
1980-1982	Frank A. Napolitano
1982-1984	Thomas D. Aceto
1984-1986	Kevin Duffy
1986-1988	Sarah L. Light
1988-1990	Paula M. Rooney
1990-1992	Joyce McPhetres
1992-1994	Joan Apple LeMoine
1994-1996	Jack Warner
1996-1998	Margaret Jablonski
1998-2000	Karen Haskell
2000-2002	Sheila Murphy
2002-2004	Cynthia Forrest
2004-2006	Craig Hutchinson
2006-2008	Brian McCoy
2008-2010	Pauline Dobrowski
2010-2012	Nancy Crimmin
2012-2014	David Zamojski
2014-2016	Rich DeCapua

PAST REGION I CONFERENCE CHAIRS & LOCATIONS

1989	Joan Apple LeMoine – Springfield, MA
1990	Eileen Sullivan – Portsmouth, NH
1991	John King – Newport, RI
1992	Eric Riedel – Portland, ME
1993	Margaret Jablonski – Hartford, CT
1994	Mary Anne Ives – Burlington, VT
1995	Peter Simonds – Hyannis, MA
1996	Shelly Masson – Springfield, MA
1997	Artie Travis – Newport, RI
1997	Gary Carskaddan – Hartford, CT
1998	Maureen McDermott – Manchester, NH
1999	Deborah Cady – Rockport, ME
2000	Brian McCoy – Springfield, MA
2001	Cheryl Barnard – Waterville Valley, NH
2002	Pauline Dobrowski – Hyannis, MA
2003	Rich DeCapua – Mystic, CT
2004	Gina Grubb-Frank – Sturbridge, MA
2005	Rebecca H. Newell – Portland, MA
2006	Phillip M. Bernard – Burlington, VT
2007	Gregory Narleski – Hyannis, MA
2008	Shawn De Veau – Newport, RI
2009	Jenn Kosses – Manchester, NH
2010	Jenn Michael – Sturbridge, MA
2011	Daniel Brown – Mystic, CT
2013	Greg Jones – Rockport, ME
2014	Elissa Carroll – Newport, RI
2015	Cameron Smith – Manchester, NH



NASPA REGION I COMMITMENT TO DIVERSITY, INCLUSION AND EQUITY

As members of the conference committee, we aim to fully support NASPA’s commitment to diversity, inclusion and equality for all attendees. We strive to provide a space of affirmation and recognition of various identities and their intersections, including but not limited to, race, color, nation origin, religion, sex, sexual orientation, gender identity and expression, socioeconomic status, veteran status, age and disability. Our goal is to create an environment that demonstrates this commitment, from the inception of the conference committee to the full culmination of the event.

We in NASPA Region I value programs, publications and employees and membership development that reinforce NASPA’s commitment to the core values of Diversity, Learning, Integrity, Service, Fellowship, Spirit of Inquiry, Collaboration and Access. We welcome and encourage open dialogue on what we as colleagues can do to further our commitment to these values, improve our professional competencies, and effectively shape and serve our institutions and students.

CONFERENCE PURPOSE STATEMENT:

The mission of the NASPA Region I Conference is to provide opportunities for networking and creating professional connections, sharing ideas and innovative practices, and exploring new topics and issues in student affairs. The Region I Conference Committee strives to create an inclusive environment for all attendees, such that everyone has equal access to participate in programs and all perspectives are valued and appreciated. The Region I Conference aspires to be an outstanding professional development opportunity for all student affairs professionals in regards to strengthening skills, acquiring knowledge related to student development and student affairs, and developing meaningful connections with peers and colleagues. Participants will leave the Region I Conference with renewed energy and passion for their work and for improving the lives of their students.

SCHEDULE AT A GLANCE

SUNDAY, NOVEMBER 13, 2016

1:00 p.m. – 8:30 p.m.	Student Affairs Leaders of Tomorrow (SALT) Conference
1:00 p.m. – 5:00 p.m.	Conference Registration
3:00 p.m. – 6:00 p.m.	Advisory Board Meeting & Dinner
6:30 p.m. – 8:30 p.m.	SSAO Institute Dinner
8:30 p.m. – 11:00 p.m.	Early Bird & SALT Conference Receptions

MONDAY, NOVEMBER 14, 2016

8:00 a.m. – 5:00 p.m.	Conference Registration & Volunteer Table
8:00 a.m. – 1:00 p.m.	SSAO Institute
9:00 a.m. – 1:00 p.m.	Student Affairs Leaders of Tomorrow (SALT) Conference
11:00 a.m. – 1:00 p.m.	Lunch & Learn Pre-Conference Workshops
11:45 a.m. – 12:15 p.m.	Volunteer Meeting
12:00 p.m. – 5:00 p.m.	Silent Auction & Marketplace Open
12:15 p.m. – 1:00 p.m.	First Time Attendee Orientation
1:15 p.m. – 2:15 p.m.	Welcome & Opening Keynote – Dr. Marc Lamont Hill
2:30 p.m. – 4:30 p.m.	Faculty Summit
2:30 p.m. – 3:30 p.m.	Education Session Block 1
3:45 p.m. – 4:45 p.m.	Education Session Block 2
5:00 p.m. – 6:00 p.m.	Education Session Block 3
6:00 p.m. – 7:30 p.m.	Off-Site Reception – University of Vermont
7:00 p.m. – 9:30 p.m.	Dinner Out on the Town
9:00 p.m. – 11:00 p.m.	Bingo & KC Receptions

TUESDAY, NOVEMBER 15, 2016

8:00 a.m. – 11:00 a.m.	Conference Registration
8:00 a.m. – 9:00 a.m.	Breakfast
8:00 a.m. – 4:00 p.m.	Silent Auction & Marketplace Open
9:15 a.m. – 10:15 a.m.	Education Session Block 4
10:15 a.m. – 10:45 a.m.	Coffee Break & Live Auction
10:45 a.m. –11:45 a.m.	Education Session Block 5
11:45 a.m. – 1:00 p.m.	Luncheon & Business Meeting
1:15 p.m. – 2:15 p.m.	Education Session Block 6
2:15 p.m. – 3:00 p.m.	Coffee Break & Live Auction
3:00 p.m. – 4:00 p.m.	Education Session Block 7
4:15 p.m. – 5:00 p.m.	State Meetings
5:30 p.m. – 6:30 p.m.	Signature Initiatives Reception
5:30 p.m. – 6:30 p.m.	Networking Reception
6:30 p.m. – 9:00 p.m.	Awards Ceremony & Banquet
7:00 p.m.	Silent Auction & Marketplace Close
9:00 p.m. – 10:00 p.m.	Silent Auction Pay Station
9:00 p.m. – 12:00 a.m.	Entertainment

WEDNESDAY, NOVEMBER 16, 2016

8:45 a.m. – 9:45 a.m.	Education Session Block 8
10:00 a.m. – 11:00 a.m.	Education Session Block 9
11:15 a.m. – 12:30 p.m.	Brunch and Closing Speaker – NASPA Region I Past, Present, & Future: A Panel Discussion

19TH ANNUAL SILENT AUCTION

The largest fundraising event of NASPA Region I is once again taking place here at the Regional Conference. The Auction has raised thousands of dollars since its inception, and its proceeds primarily support the annual SALT conference for undergraduate students. The Auction also subsidizes the conference costs for recipients of the Catch a Rising Star, Richard F. Stevens Outstanding Graduate Student, and Richard F. Stevens Outstanding New Professional awards.

The conference committee is pleased to announce online bidding has returned. Please visit [www.biddingforgood.com/naspaparegion1silentauction](http://www.biddingforgood.com/naspaparegion1silentauction), register to bid, and then as we always say, bid high and bid often! Lastly, you will also see the “Lunch with Legends” raffle has moved to online bidding. Please visit our 2016 featured legends on the auction website.

The conference committee hopes for an exciting Auction, and our goal is to raise \$10,000 to support the future of our field. Please check out the various options, including the live auctions. Be a bidder, be a winner!

SALT CONFERENCE

The Student Affairs Leaders of Tomorrow (SALT) Conference is designed to introduce undergraduate students to the field of student affairs. Participants will have the opportunity to meet other student leaders who share their same interests, discover the career path that is right for them, meet professionals in the field who will provide guidance, mentorship and direction. Participants will also have the opportunity to learn about and meet representatives from various graduate programs in student affairs in our region.

The SALT Conference runs from Sunday afternoon to Monday afternoon prior to the opening of the Region I Annual Conference. SALT is limited to current undergraduate students only, and all participants are selected through an application process prior to the conference. Programs at the SALT Conference are geared toward professional and career development and learning about graduate school programs.

The SALT Conference would not be possible without the participation of the following graduate schools in Higher Education and Student Affairs:

Assumption College	Eastern Connecticut	Salem State	University of Bridgeport
Becker College	Emmanuel College	Simmons College	University of Connecticut
Boston College	Fitchburg State	Southern Connecticut	University of Hartford
Bridgewater State	Framingham State	Southern New Hampshire	University of New England
Bryant University	Lasell College	Stonehill College	University of New Haven
Central Connecticut	Mass College of Liberal Arts	Suffolk University	University of Rhode Island
Clark University	Merrimack College	UConn	University of Vermont
Colby College	Mount Holyoke College	UMASS-Amherst	Wellesley College
College of the Holy Cross	Providence College	UMASS-Lowell	Western New England
Dean College	Quinnipiac University	University of Maine	Wheaton College

SSAO INSTITUTE

The Senior Student Affairs Officer (SSAO) Institute is an opportunity for SSAOs to discuss topics and issues relevant to their positions. The Institute includes a dinner on Sunday Night and a half-day of programs on Monday. The topic of the VPSA Institute changes every year.

This year’s theme focuses on understanding an institution’s organizational culture, and how this understanding can be applied to manage change and transition. Valerie Szymcowicz from the search firm Spelman Johnson will be the featured speaker and will share some of the tools search firms use to rapidly assess and gain insights into an organization’s culture, and participants will learn how to adopt some of these methods for assessing their own institution’s cultural context.

FACULTY SUMMIT

Join us for an interactive panel discussion and workshop for the faculty summit. Our distinguished panel will discuss defining and pursuing a scholarly agenda of research, collaboration, and conference participation that reflects your values and talents. We’ll discuss developing a research agenda, working with graduate students on research projects, finding strategies to finance your research agenda, publishing research from your dissertation, balancing time between research, teaching, and service and other relevant topics. All current adjunct and full-time faculty are welcome!

THE PANELISTS:

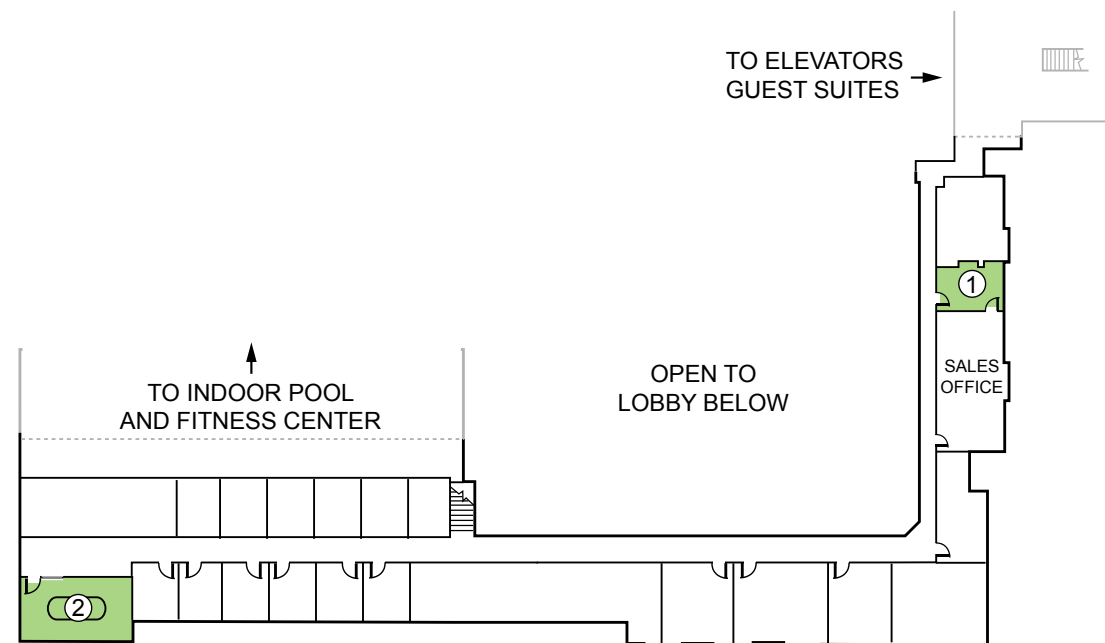
Deborah Hunter (Moderator) Associate Professor, University of Vermont  
Vanessa Johnson, Associate Professor and Program Director, Northeastern University  
Ezekiel Kimball, Assistant Professor, University of Massachusetts Amherst  
Steven Oliver, Assistant Professor, Salem State University  
Annemarie Vaccaro, Associate Professor, University of Rhode Island

WIRELESS ACCESS

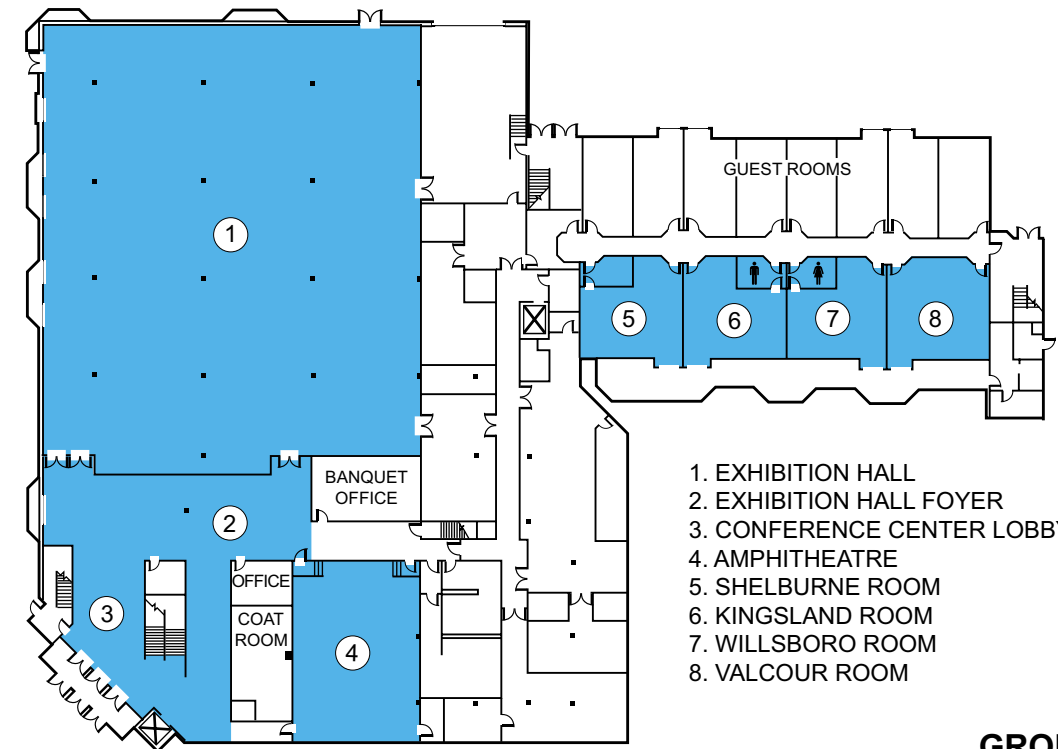
Connect to the following wireless network:  
**PSAV\_wireless**  
*No password is necessary*

GENDER INCLUSIVE RESTROOMS

*Gender inclusive bathrooms will be offered in a central conference location.*

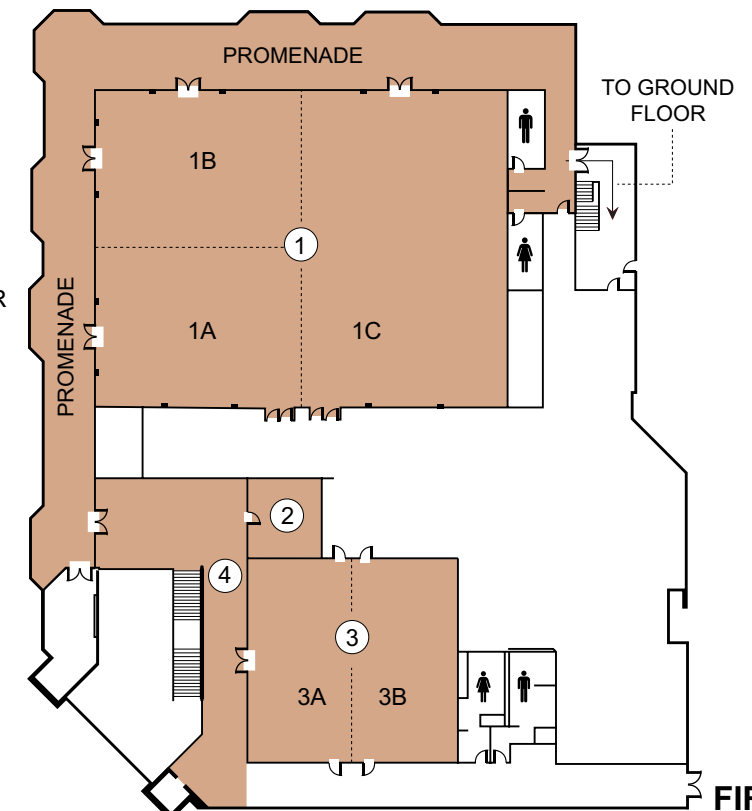


**SECOND FLOOR**



**GROUND FLOOR**

1. EMERALD BALLROOM
  - 1A. EMERALD BALLROOM I
  - 1B. EMERALD BALLROOM II
  - 1C. EMERALD BALLROOM III
2. CARLETON BOARDROOM
3. DIAMOND BALLROOM
  - 3A. DIAMOND BALLROOM I
  - 3B. DIAMOND BALLROOM II
4. DIAMOND BALLROOM FOYER



**FIRST FLOOR**

# FEATURED SPEAKERS



**Dr. Marc Lamont Hill**

MONDAY NOVEMBER 14

1:15PM - 2:15PM

Lake Champlain Exhibition Hall

## Opening Keynote Speaker

Dr. Hill is one of the leading intellectual voices in the country, and his work covers topics such as culture, politics, and education. Dr. Hill is Distinguished Professor of African American Studies at Morehouse College. His most recent book, *Nobody: Casualties of America's War on the Vulnerable, from Ferguson to Flint and Beyond*, was recently released. The committee is honored that Dr. Hill will be joining us, and we hope you look forward to hearing from him.

## Closing Panel

WEDNESDAY, NOVEMBER 16

11:15AM

Lake Champlain Exhibition Hall

This year's closing session will be a panel discussion on the history and future of our region and our profession. The panel will feature many of Region I's past Regional Vice Presidents and Directors, who will share their experiences and thoughts on how our region can continue to provide support and education to student affairs professionals.

### ***Panelists:***

Dr. Nancy Papagno Crimmin, Becker College

Dr. Rich DeCapua, Boston College - *Moderator*

Pauline Dobrowski, Stonehill College

Dr. Brian McCoy, Nichols College

Sheila Murphy, Witt/Kieffer

David Zamojski, Boston University

# SCHEDULE

## SUNDAY, NOVEMBER 13, 2016

1 P.M. – 9: 30P.M.

STUDENT AFFAIRS LEADERS OF TOMORROW  
(SALT) CONFERENCE

*Emerald Ballroom I*

2 P.M. – 7 P.M.

CONFERENCE REGISTRATION

*Diamond Ballroom Foyer*

3 P.M. – 5 P.M.

REGION I ADVISORY BOARD MEETING

*Emerald Ballroom III*

6:30 P.M. – 8:30 P.M.

SENIOR STUDENT AFFAIRS OFFICER (SSAO)  
INSTITUTE DINNER

8:30 P.M. – 9:30 P.M.

EARLY BIRD AND SALT RECEPTION

*G's Restaurant*

*This reception is a great opportunity to connect with friends and colleagues as you relax, unwind, and prepare yourself for the days ahead.*

## MONDAY, NOVEMBER 14, 2016

8:00 A.M. – 5:00 P.M.

CONFERENCE REGISTRATION AND  
VOLUNTEER TABLE

*Diamond Ballroom Foyer*

8:00 A.M. - 9:00 A.M.

BOOTCAMP SESSION

*Valcour*

GROUP WALK/RUN

*Meet in Conference Center Lobby*



## MONDAY, NOVEMBER 14, 2016

- 8:00 A.M. - 6:00 P.M.      WELLNESS SPACE OPEN  
Wellness Suite  
*This space will be dedicated to relaxation and recharging. Get information about wellness and explore holistic ideas for health, wellness, & mindful activities. We hope you will take a minute for yourself because you deserve it!*
- 8:00 A.M. – 9:30 A.M.      STATE DIRECTORS MEETING  
Providence Boardroom
- 9:00 A.M. – 1:00 P.M.      SALT CONFERENCE  
Emerald Ballrooms I & II
- 8:00 A.M. – 1:00 P.M.      SSAO INSTITUTE  
Diamond Ballroom I
- 11:00 A.M. – 1:00 P.M.      LUNCH AND LEARN PRE-CONFERENCES  
***“Learning, Sharing, and Laughing.. at all the many hats you wear”***  
Kingsland  
*Are you a new or entry level professional looking for the best practices on career advancement, skills for success, and tips on how to balance the many hats you will wear? Then this session is for you! Hosted by the Knowledge Communities (KC) for New Professionals, Wellness & Health Promotion and Student Career Development. Come learn, share, and laugh. #NASPA16R1*

Presented by:

- **Love Wallace- Residence Hall Director, University of Connecticut**
- **Jill Bassett- Assistant Dean of Student Affairs, Franklin Pierce University**
- **Montgomery Thomas- Assistant Director of Community Relations, Brandeis University**

## **Passing the Torch: Supervision Strategies for the Mid-Level Professional** Willsboro

Student Affairs practitioners spend a significant amount of time supervising professional staff. As managers, we know that effective supervision is critical to the success and growth of the professionals we work with. It is through strong supervision that student affairs departments are able to achieve strategic goals and support student success. This pre-conference will address current trends in supervision, how to develop effective supervisory relationships, outline the challenges and opportunities of supervising professional staff, discuss the navigation of critically important (but necessary) conversations, and share insights into developing the next generation of Student Affairs professionals.

Presented by:

- **Jennifer Forry, Interim Dean of Student Affairs, Newbury College**
- **Kelly Golden, Assistant Dean of Student Affairs, Regis College**
- **Kristen Pierce, Director of Residence Life, Stonehill College**
- **Peter Wiernicki, Associate Director of Community Standards, Bridgewater State University**
- **Ted Zito, Director of Residential Life, Assumption College**

## **Being Both: Integrating Poor & Working Class Identity in Middle Class Academia**

Valcour

Similar to other underrepresented populations in higher education, student affairs educators from poor and working class backgrounds experience complex transitions as they navigate work in higher education. Issues of economic, cultural, social, and linguistic capital can arise everywhere from the boardroom to the buffet line. This preconference session will provide space to class identity in higher education.

Presented by:

- **Sonja Ardoin- Program Director & Clinical Assistant Professor, Boston University**
- **Jacinda Félix Haro-Associate Dean of Students, MCPHS University**

## 11:00 A.M. – 1:00 P.M. LUNCH AND LEARN PRE-CONFERENCES

### **Women's paths to promotion**

Shelburne

In this session participants will hear from WISA KC/Regional Advisory Board members at various levels in their career. These female-identified professionals will share insights on their professional path and how they progressed in their careers. Issues such as education, professional development, personal and professional decisions, management styles, and negotiation will be discussed.

Presented by:

- **Erika Lamarre - Associate Dean of Students, Colby College**

## 11:30 A.M. - 1:00 P.M. FACULTY LUNCHEON C'S Restaurant

Join other faculty from the region for an informal networking lunch as we share current challenges and successes in our work. Cost is \$35 per faculty member; sign up on the Lunch and Learn page. All current adjunct and full-time faculty are welcome!

## 11:45 A.M. – 12:15 P.M. VOLUNTEER MEETING Diamond Ballroom II

## 12:00 P.M. - 5:00 P.M. SILENT AUCTION & MARKETPLACE OPEN Lake Champlain Exhibition Hall

## 12:15 P.M. – 1:00 P.M. FIRST TIME ATTENDEE ORIENTATION Diamond Ballroom II

## 1:15 P.M. – 2:15 P.M. WELCOME AND OPENING KEYNOTE – DR. MARC LAMONT HILL Lake Champlain Exhibition Hall

## 2:30 P.M. – 4:30 P.M. FACULTY SUMMIT (NO COST & OPEN TO ALL FACULTY)

### **Crafting a Satisfying Scholarly Agenda**

Shelburne

Join us for an interactive panel discussion and workshop for the faculty summit. Our distinguished panel will discuss defining and pursuing a scholarly agenda of research, collaboration, and conference participation that reflects your values and talents. We'll discuss developing a research agenda, working with graduate students on research

projects, finding strategies to finance your research agenda, publishing research from your dissertation, balancing time between research, teaching, and service and other relevant topics.

Panelists:

- **Deborah Hunter (Moderator) Associate Professor, University of Vermont**
- **Vanessa Johnson, Associate Professor and Program Director, Northeastern University**
- **Ezekiel Kimball, Assistant Professor, University of Massachusetts Amherst**
- **Steven Oliver, Assistant Professor, Salem State University**
- **Annemarie Vaccaro, Associate Professor, University of Rhode Island**

## 2:30 P.M. – 3:30 P.M. EDUCATION SESSION BLOCK 1 *See below for session descriptions*

## 3:45 P.M. – 4:45 P.M. EDUCATION SESSION BLOCK 2 *See below for session descriptions*

## 5:00 P.M. – 6:00 P.M. EDUCATION SESSION BLOCK 3 *See below for session descriptions*

## 5:00 P.M. – 5:45 P.M. VENDOR RECEPTION *invite only* Lake Champlain Exhibition Hall Lobby

## 6:00 P.M. – 7:30 P.M. OFF- SITE RECEPTION **Grand Maple Ballroom, 4<sup>th</sup> Floor** **The Dudley H. Davis Center** **590 Main Street, Burlington, VT 05405**

## 7:30 P.M. – 9:30 P.M. DINNER OUT ON THE TOWN

## 9:00 P.M. – 11:00 P.M. GENDER & SEXUALITY, AFRICAN AMERICAN, LATINO/A, MULTIRACIAL, AND INDIGENOUS PEOPLE KCS SOCIAL Emerald Ballroom III

## 9:00 P.M. - 11:00 P.M. BINGO - WILL THE NUMBERS BE ON YOUR SIDE THIS YEAR!? B-I-N-G-O! Diamond Ballroom

TUESDAY, NOVEMBER 15

7:00 A.M. - 8:00 A.M.	<b>BOOTCAMP SESSION</b> <i>Valcour</i>
	<b>GROUP WALK/RUN</b> <i>Meet in Conference Center Lobby</i>
8:00 A.M. - 6:00 P.M.	<b>WELLNESS SPACE OPEN</b> <i>Wellness Suite</i>
<i>This space will be dedicated to relaxation and recharging. Get information about wellness and explore holistic ideas for health, wellness, &amp; mindful activities. We hope you will take a minute for yourself because you deserve it!</i>	
8:00 A.M. - 9:00 A.M.	<b>BREAKFAST</b> <i>Lake Champlain Exhibition Hall</i>
8:00 A.M. - 9:00 A.M.	<b>ENGAGEMENT BREAKFAST</b> <i>Lake Champlain Exhibition Hall</i>
<i>While enjoying breakfast take the opportunity to learn about Region I Knowledge Communities, regional initiatives, and additional ways you can get involved!</i>	
8:00 A.M. - 9:15 A.M.	<b>FIRST TIME ATTENDEE MEET-UP</b> <i>Amphitheatre</i>
8:00 A.M. - 11:00 A.M.	<b>CONFERENCE REGISTRATION OPEN</b> <i>Diamond Ballroom Foyer</i>
8:00 A.M. - 4:00 P.M.	<b>SILENT AUCTION &amp; MARKETPLACE OPEN</b> <i>Lake Champlain Exhibition Hall</i>

9:15 A.M. - 10:15 A.M.	<b>EDUCATION SESSION BLOCK 4</b> <i>See below for session descriptions</i>
10:15 A.M.- 10:45 A.M.	<b>COFFEE BREAK &amp; LIVE AUCTION</b> <i>Lake Champlain Exhibition Hall</i>
	<b>ZENTANGLE SESSION</b> <i>Wellness Suite</i>
	<b>WELLNESS SPACE OPEN</b> <i>Wellness Suite</i>
10:45 A.M. - 11:45 A.M.	<b>EDUCATION SESSION BLOCK 5</b> <i>See below for session descriptions</i>
11:45 A.M. - 1:00 P.M.	<b>LUNCHEON AND BUSINESS MEETING</b> <i>Lake Champlain Exhibition Hall</i> <i>See below for session descriptions</i>
1:15 P.M. - 2:15 P.M.	<b>EDUCATION SESSION BLOCK 6</b>
2:15P.M. - 3:00 P.M. .	<b>COFFEE BREAK &amp; LIVE AUCTION</b> <i>Lake Champlain Exhibition Hall</i>
	<b>ZENTANGLE SESSION</b> <i>Wellness Suite</i>
	<b>WELLNESS SPACE OPEN -</b> <i>Wellness Suite</i>
2:15 P.M. - 3:00 P.M.	<b>SOCIAL JUSTICE CAREER PATHS ROUNDTABLE</b> <i>Valcour</i>
<i>Join colleagues from across the region to discuss career paths in social justice.</i>	



## TUESDAY, NOVEMBER 15

3:00 P.M. – 4:00 P.M.	<b>EDUCATION SESSION BLOCK 7</b> <i>See below for session descriptions</i>
4:15 P.M. – 5:00 P.M.	<b>STATE MEETINGS</b>  <div> <div> <b>Connecticut</b>  <b>Maine</b>  <b>Massachusetts</b>  <b>New Hampshire</b>  <b>Rhode Island</b>  <b>Vermont</b> </div> <div> <b>Diamond Ballroom I</b>  <b>Valcour</b>  <b>Diamond Ballroom II</b>  <b>Shelburne</b>  <b>Willsboro</b>  <b>Amphitheatre</b> </div> </div>
4:15 P.M. – 5:00 P.M.	<b>INTERNATIONAL DELEGATE MEET-UP</b> <i>Kingsland</i>  <i>Meet other international delegates from Region I to share ideas and network in a casual setting.</i>
5:30 P.M. – 6:30 P.M.	<b>SIGNATURE INITIATIVES RECEPTION</b> <i>Diamond Ballroom</i>
5:30 P.M. – 6:30 P.M.	<b>NETWORKING RECEPTION</b> <i>Emerald Ballroom Promenade</i>
6:30 P.M. – 9:00 P.M.	<b>AWARDS CEREMONY AND BANQUET</b> <i>Emerald Ballroom</i>
7:00 P.M.	<b>SILENT AUCTION &amp; MARKETPLACE CLOSE</b>
9:00 P.M. – 10:00 P.M.	<b>SILENT AUCTION PAY STATION</b> <i>Lake Champlain Exhibition Hall Lobby</i>

9:00 P.M. – MIDNIGHT	<b>NOVELTIES BY FUN ENTERPRISES</b> <i>Emerald Ballroom Promenade</i>  <i>-Caricature Artists, Photo travel mugs, Psychic Readers and Photo Booth!</i> <i>Come by and see how many Student Affairs professionals you can squeeze into the booth!</i>
	<b>TRIVIA</b> <i>Emerald Ballroom</i>  <i>Back by popular demand with host Peter Wiernicki. Get a team together and come test your trivia knowledge.</i>
	<b>KARAOKE</b> <i>Diamond Ballroom</i>  <i>Hosted by the ever entertaining Chester Li. Come by and give us all your best rendition of your favorite song!</i>

## WEDNESDAY, NOVEMBER 16

8:00 A.M. – 8:30 A.M.	<b>GUIDED IMAGERY SESSION</b> <b>WITH MELINDA K. STOOPS</b> <i>Wellness Suite</i>  <i>Start your day right by focusing on your overall wellbeing. This session will utilize guided imagery to facilitate participant attention to personal wellness goals, and the identification of strategies to enhance wellness. Comfortable clothing encouraged.</i>
8:00 A.M. – 11:00 A.M.	<b>WELLNESS SPACE OPEN</b> <i>Wellness Suite</i>  <i>This space will be dedicated to relaxation and recharging. Get information about wellness and explore holistic ideas for health, wellness, &amp; mindful activities. We hope you will take a minute for yourself because you deserve it!</i>

## WEDNESDAY, NOVEMBER 16

8:45 A.M. – 9:45 A.M.	EDUCATION SESSION BLOCK 8 <i>See below for session descriptions</i>
10:00 A.M. – 11:00 A.M.	EDUCATION SESSION BLOCK 9 <i>See below for session descriptions</i>
11:15 A.M. – 12:30 P.M.	BRUNCH AND CLOSING <i>Lake Champlain Exhibition Hall</i>

WE ARE EXCITED TO BE CLOSING THE 2016 REGION 1 CONFERENCE WITH AN ORIGINAL AND UNIQUE SESSION COMPRISED OF MANY PAST REGION I REGIONAL DIRECTORS.

*Facilitated by current past regional director, Dr. Richard DeCapua, this panel will be forward focused, discussing issues paramount to the work of student affairs administrators, where conference attendees will drive the conversation through an engaging and interactive program format.*

## REGIONAL AWARD ACKNOWLEDGEMENTS

### **THANK YOU TO THE FOLLOWING INDIVIDUALS FOR SERVING ON THE REGIONAL AWARDS SELECTION COMMITTEE:**

MATT HEISER, CHAIR, WENTWORTH INSTITUTE OF TECHNOLOGY  
KELLI CONNORS, EMMANUEL COLLEGE  
KATIE KIDWELL, MASSACHUSETTS COLLEGE OF ART & DESIGN  
ELISSA CARROLL, QUINNIPIAC UNIVERSITY  
CAROL SACCHETTI, ROGER WILLIAMS UNIVERSITY  
LADARIUS DUPREE, UNIVERSITY OF VERMONT

## CONFERENCE COMMITTEE ACKNOWLEDGEMENTS

### **THE REGION I CONFERENCE COMMITTEE WOULD LIKE TO THANK THE FOLLOWING PEOPLE AND BUSINESSES FOR THEIR CONTRIBUTIONS, ASSISTANCE, AND SUPPORT:**

#### **CONFERENCE COMMITTEE WOULD LIKE TO ACKNOWLEDGE:**

NASPA NATIONAL OFFICE STAFF  
KEVIN KRUGER, NASPA PRESIDENT  
DANNY ANZUETO, NASPA NATIONAL OFFICE  
NATHAN VICTORIA, NASPA NATIONAL OFFICE  
SHERATON BURLINGTON  
SILENT AUCTION DONORS AND PARTICIPANTS  
BETH MORIARTY, REGION I DIRECTOR  
MARC LAMONT HILL  
RICH DECAPUA  
PAULINE DOBROWSKI  
BRIAN MCCOY  
NANCY PAPAGNO CRIMMIN  
SHEILA MURPHY  
DAVID ZAMOJSKI  
JENN DELUCA LEAVITT

### **PROGRAM REVIEWER ACKNOWLEDGEMENTS:**

*THANK YOU TO THE FOLLOWING  
INDIVIDUALS WHO HELPED IN REVIEWING  
PROGRAM PROPOSALS.*

CAITIE ABRAHAMSON  
ANDREW ANDERSON  
ALANA ANDERSON  
KYNDRA ANGELL  
CHRISTY ANTHONY  
ERIN BAKER  
ALISON BLACK  
KEVIN BOEHM  
STUART BROWN  
DANIEL BROWN  
CHRISTOPHER CAMPBELL  
AMY CARMACK  
ELISSA CARROLL  
ELIZABETH CHING-BUSH  
KELLI CONNORS  
BRIDGET DAILEY  
CORY DAVIS  
LISA DESAUTELS-POLIQVIN  
KAT DOUGHERTY  
SHARON DUFFY  
STEFANO FASULO  
BARABARA FIENMAN  
LAURA FLYNN  
PETER FOWLER  
BRITANY GALLAGHER  
SARAH GALLENGER  
DAVE GOLDEN  
STEPHANIE GONZALEZ

MICHAEL GUTHRIE  
JOSIAH HARRIS-ADAM  
AUDREY HEINS  
JENNIFER JENSEN  
GREGORY JONES  
JUDY KAWAMOTO  
KERRY KEARNS  
MEGHAN KENNEY  
NOMAN KHANANI  
JENN KOSSES  
ALYSSA LAURENZA  
BARBARA LOMONACO  
COLLEEN LUBIN  
MONICA MASINO  
BRYAN MCGRATH  
DAVID MCGRAW  
PATRICIA MORAN  
ERIN MORRELL  
EMILY NORTH  
DANIELLE O'CONNELL  
MEGAN BUDA  
CLAIRE OSTRANDER  
JOSH PEIPOCK  
MATTHEW PETERSONS  
KATHERINE PEZZELLA  
BRIAN QUINLAN  
MATTHEW RAZEK  
GEORGE REGAN  
KRISTIN RIDGE  
PAUL SERIGNESE  
CAMERON SMITH  
KATE ST. MARIE

NANCY STOLL  
BEN TRAPANICK  
KATHRYN TURNER  
CLARISSA UTTLEY  
LOVE WALLACE  
MAUREEN WARK  
MEGAN WEBSTER  
MICHAEL WISEMAN

***Join us next year***





# EDUCATIONAL SESSIONS

## MONDAY, NOVEMBER 14 - 2:30PM - 2:55PM

### MINI SESSION

**Everyday I'm Hustlin': The Art of Building Your Side Hustle**

**Valcour**

Colleen Lubin, Associate Director of Student Involvement, Southern New Hampshire University  
Constanza Cabello, Director of Intercultural Affairs, Stonehill College

Student Affairs practitioners have many skills and talents! While some are directly related to the field, some may not be. Presenters will share ways in which they've tapped into their talents to build "side- hustles" that not only expand their professional portfolio, but also supplement income (who doesn't like a little extra cash)!

*Personal and Ethical Foundations, Organizational and Human Resources  
Graduate Students, New/Entry-Level Professionals  
Show & Tell*

## MONDAY, NOVEMBER 14 - 2:30PM - 3:30PM

### SELECT EDUCATION SESSION

**A Rising Tide for Student Affairs Leaders: Leveraging the Current Regulatory Landscape to Support Broader Campus Prevention Initiatives**

*Endorsed by the Alcohol & Other Drugs Knowledge Community*

**Willsboro**

Kimberley Timpf, Senior Director of Partner Education, EverFi  
Rob Buelow, Vice President of Partner Education, EverFi

Heightened attention to campus sexual violence has Student Affairs professionals asking, "How can finite resources be allocated to appropriately address a growing set of mandates around this critical issue without losing focus on broader wellness and safety challenges?" This presentation will discuss cross-cutting public health frameworks and mission-critical priorities that can be leveraged to inspire collaborative efforts and ensure we stay focused on doing the best work possible to address these interconnected issues.

*Assessment, Evaluation, and Research, Leadership  
Mid-Level Managers, Senior Student Affairs Officers*

## MONDAY, NOVEMBER 14 - 2:30-3:30PM

### TRADITIONAL EDUCATION SESSION

**Disrupting the Leadership Narrative: A Critical Course Model for Student Leaders**

**Emerald Ballroom I**

Anna Fox, Graduate Student, University of Massachusetts Amherst  
Caitlin Kidder, Graduate Student, University of Massachusetts Amherst

Looking for new ways to engage students in critical discourse around leadership? We created a course for student leaders at UMass Amherst that shifts the narrative from individual-centered towards decentralized, critical leadership. Learn about coursework that draws from grassroots leadership theory, strengths-based leadership, and reflexive practice. You may change how you see yourself as a leader, too!

*Leadership, Student Learning and Development  
Graduate Students, New/Entry-Level Professionals, Mid-Level Managers  
Show & Tell*

## MONDAY, NOVEMBER 14 - 2:30PM - 3:30PM

### TRADITIONAL EDUCATION SESSION

**Managing Our Anxiety About Student Anxiety**

**Amphitheatre**

Lee Burdette Williams, Director of Higher Education Training and Development, College Autism Network  
Kathryn Boger, Director and Clinical Psychologist, McLean Anxiety Management Program

Anxiety has become the top reported health concern among college students and is one of the most pervasive challenges campus mental health professionals are encountering. It also presents challenges elsewhere on campus. This session will share information about anxiety disorders, their prevalence on campuses, related challenges, and best practices for responding to anxiety when working with a student in a non-counseling role.

*Personal and Ethical Foundations, Advising and Supporting  
New/Entry-Level Professionals, Mid-Level Managers  
Workshop*

# EDUCATIONAL SESSIONS

## MONDAY, NOVEMBER 14 - 2:30PM - 3:30PM

### TRADITIONAL EDUCATION SESSION

#### Equalizing Gender Representation in Higher Education Leadership

##### ***Emerald Ballroom III***

Courtney Clark, Undergraduate Program Coordinator, Boston University

Kaitie Noe, Staff Coordinator, Boston University

Karen Alexander, Assistant Director of Student Affairs, Tufts University

As three white, cisgender, straight women, we have noticed a gender imbalance in higher education leadership. Student affairs professionals play an important role in the coeducational lives of our students. How can we model good leadership for them if they do not see leaders who look like them? We want your input on how we can fix this problem together!

*Leadership, Social Justice and Inclusion*

*New/Entry-Level Professionals, Mid-Level Managers*

*Roundtable*

## MONDAY, NOVEMBER 14 - 2:30PM - 3:30PM

### TRADITIONAL EDUCATION SESSION

#### Raising a Bystander Intervention Movement: Developing Inclusive Peer-Led Programs for All Students

##### ***Diamond Ballroom II***

Katie Dalton, Director, Boston College Women's Center

Rachel DiBella, Assistant Director, Boston College Women's Center

Erin Doolin, Graduate Coordinator, Boston College Women's Center

Research indicates that the role of pro-social bystanders is invaluable to the movement toward preventing sexual violence from occurring. During this session participants will explore the strategies behind Boston College's development of a four year multi-pronged prevention arc that engages students in inclusive bystander intervention education at four different points during their college career. Participants will begin to develop ways in which BC's program can be adapted for their campus community.

*Personal and Ethical Foundations, Values, Philosophy, and History, Assessment, Evaluation, and Research, Leadership, Social Justice and Inclusion, Student Learning and Development*

*Mid-Level Managers, Senior Student Affairs Officers*

*Show & Tell*

## MONDAY, NOVEMBER 14 - 2:30PM - 3:30PM

### TRADITIONAL EDUCATION SESSION

#### Achievements and Challenges of Serving Trans\* Students at Concordia University

##### ***Diamond Ballroom I***

Lisa Ostiguy, Deputy Provost, Concordia University

Gaya Arasaratnam, Director, Campus Wellness and Support Services, Concordia University

Gabrielle Bouchard, Peer Support and Trans Advocacy Coordinator, Centre for Gender Advocacy

Andrew Woodall, Dean of Students, Concordia University

Concordia University in Montreal is home to 46,000 students and has a storied history of serving diverse populations including trans\* students.

This session shares achievements, challenges, and promising practices in serving trans\* students--a marginalised population that is often misunderstood or unknown. It also includes opportunities for participants to share learnings and discuss strategies and challenges at their institutions.

*Social Justice and Inclusion, Advising and Supporting*

*Mid-Level Managers, Senior Student Affairs Officers*

*Show & Tell*

## MONDAY, NOVEMBER 14 - 2:30PM - 3:30PM

### TRADITIONAL EDUCATION SESSION

#### Where Faith and Pride Collide: LGBTQ+ Resources at a Faith-Based Institution

##### ***Emerald Ballroom II***

Patrick Hale, Assistant Director of Intercultural Affairs, Stonehill College

You are invited to participate in a conversation on the challenges and opportunities in developing LGBTQ+ resources at faith-based institutions. The presenter will share narratives and experiences in creating inclusive campus resources at a religiously affiliated institution, as well as ideas, insights, and reflections with the goal of inspiring continued work on all campuses for LGBTQ+ individuals. #LGBTQFaith

*Values, Philosophy, and History, and Social Justice and Inclusion*

*New/Entry-Level Professionals, Mid-Level Managers*

# EDUCATIONAL SESSIONS

## MONDAY, NOVEMBER 14 - 2:30PM - 3:30PM

### TRADITIONAL EDUCATION SESSION

**New Member Education and a Fine Tooth Comb**  
*Kingsland*

Susan Zarnowski, Associate Director, Bryant University  
Megan Fox, Assistant Director, University of Rhode Island

Recruitment is over and now chapters begin planning their new member education processes. This workshop will discuss best practices for reviewing new member education proposals in addition to what the school needs to provide its new members. This workshop will share a public and private school's take on how we orient our new members and the essentials needed for them to be successful in their community and institution.

*Values, Philosophy, and History, Student Learning and Development,  
Advising and Supporting  
Graduate Students, New/Entry-Level Professionals, Mid-Level Managers  
Workshop*

## MONDAY, NOVEMBER 14 - 3:45PM - 4:10PM

### MINI SESSION

**Sexual Violence Policies and Practices**  
*Valcour*

Lisa Ostiguy, Deputy Provost, Concordia University  
Jennifer Drummond, Coordinator, Sexual Assault Resource Center, Concordia University  
Melodie Sullivan, Senior Legal Counsel, Concordia University

Behaviours associated with rape culture, victim blaming, normalizing sexual objectification and violence violate the values of higher learning institutions. In 2013, Concordia launched a sexual assault resource centre to educate its community and provide survivor support. In 2014-2015 a formal review of its policies and protocols related to sexual assault was conducted, which led to the development of a university policy on sexual violence, adopted in 2016. This presentation will highlight the actions taken as a result of the review and include samples of our communication, and educational training, and our new sexual violence policy.

*Law, Policy, and Governance, Leadership, Social Justice and Inclusion,  
Advising and Supporting  
Mid-Level Managers, Senior Student Affairs Officers  
Show & Tell*

## MONDAY, NOVEMBER 14 - 3:45PM - 4:45PM

### SELECT EDUCATION SESSION

**EveryBODY is Worthy - Creating a Campaign About Positive Body Image**  
*Willsboro*

Danielle Johnson, Resident Director, Bridgewater State University  
Tiffany Hoyt, Resident Director, Bridgewater State University

At Bridgewater State University, we discovered a need to talk about body image in order to combat negative societal messages and create a more inclusive environment for our campus. Join us to learn how we created this campaign in an effort to help our students and staff think more positively about their bodies and combat stereotypes related to their image.

*Personal and Ethical Foundations, Social Justice and Inclusion  
New/Entry-Level Professionals, Mid-Level Managers  
Show & Tell*

## MONDAY, NOVEMBER 14 - 3:45PM - 4:45PM

### TRADITIONAL EDUCATION SESSION

**Get (In)Formation: A Survival Guide for New Professionals of Color**  
*Endorsed by the New Professionals and Graduate Students Knowledge Community*

#### ***Emerald Ballroom III***

Carolina Davila, Residence Hall Director, University of Connecticut  
Robin Bogen, Residence Hall Director, University of Connecticut  
Eunice Omega, Residence Hall Director, Eastern Connecticut State University

Have you ever wondered, "will they understand me as a professional of color?" As institutions prioritize creating inclusive campuses for students, we have to start at the source and consider the needs of our staff. We invite you to share your experiences, learn how to navigate the workplace, and build your network as a professional of color.

*Personal and Ethical Foundations, Social Justice and Inclusion  
New/Entry-Level Professionals, Mid-Level Managers  
Workshop*



# EDUCATIONAL SESSIONS

## MONDAY, NOVEMBER 14 - 3:45PM - 4:45PM

### TRADITIONAL EDUCATION SESSION

**Intersections: Building Leadership Competencies Through Experiential Learning**

***Emerald Ballroom I***

David DeAngelis, Director of Student Leadership and Involvement, Suffolk University

John Silveria, Assistant Dean of Students, Suffolk University

Experiential learning brings learning out of the classroom into the “real” world providing the opportunity for students to attain, develop, and practice skill sets that can be capitalized on when they begin employment. This session is designed to provide the “why” and “how to” of experiential learning. Participants will be able to design engaging experiential learning opportunities intended to fortify the skills and competencies valued by employers.

*Leadership, Student Learning and Development  
New/Entry-Level Professionals, Mid-Level Managers  
Workshop*

## MONDAY, NOVEMBER 14 - 3:45PM - 4:45PM

### TRADITIONAL EDUCATION SESSION

**Revamping and Overhauling: A Look at Our “New” New Student Orientation Program**

***Diamond Ballroom I***

Dexter Viator, Assistant Director of Campus Activities & Student Leadership, Becker College

Danielle O'Connell, Director of Campus Activities & Student Leadership, Becker College

Sara Swillo Muckian, Associate Director of Campus Activities & Student Leadership, Becker College

Becker College's New Student Orientation program was looking for changes after reviewing assessment feedback from their program. In an effort to keep current presenters considered a multitude of decisions when revamping New Student Orientation. Taking into consideration a higher percentage of students coming from a distance, the need to provide a virtual orientation experience was crucial.

*Assessment, Evaluation, and Research, Student Learning and Development, Technology  
New/Entry-Level Professionals, Mid-Level Managers  
Show & Tell*

## MONDAY, NOVEMBER 14 - 3:45PM - 4:45PM

### TRADITIONAL EDUCATION SESSION

**Leading Multi-Disciplinary Health Teams Through Change**

***Endorsed by the Wellness & Health Knowledge Community***

***Kingsland***

Gaya Arasaratnam, Director Campus Wellness & Support Services, Concordia University

Multidisciplinary Health and Wellness teams are complex. They may include Primary Health Clinics, Health Promotion, Counselling Centres, and Disability Services. Leading these teams through significant shifts in strategy or disruptions requires managerial skill, ambition, humour, and endurance. This session speaks from the trenches about how change was (or is) being managed on two Canadian campuses in Ontario and Quebec.

*Organizational and Human Resources, Leadership,  
Advising and Supporting  
Mid-Level Managers, Senior Student Affairs Officers  
Show & Tell*

## MONDAY, NOVEMBER 14 - 3:45PM - 4:45PM

### TRADITIONAL EDUCATION SESSION

**Building Connections & Exploring Your Professional Development Through Knowledge Communities**

***Amphitheatre***

Jen Stanley, Title IX Coordinator/Assoc. Dean/Dir. of the Gender & Sexuality Center, Roger Williams University

Connie Cabello, Director of Intercultural Affairs, Stonehill College

Celebrating the 15th year of NASPA's Knowledge Communities (KCs), the KCs provide an opportunity for members to expand their professional development through access to information and resources in specific student affairs areas of interest, identity and specialty. Knowledge Communities also support the student affairs mission by bringing members together through shared experiences and professional community building. This session will demystify KCs by providing an overview of their mission, structure, leadership, and initiatives, as well as provide opportunities for regional involvement.

*Assessment, Evaluation, and Research, Leadership, Social Justice and Inclusion  
New/Entry-Level Professionals, Mid-Level Managers  
Other*

# EDUCATIONAL SESSIONS

## MONDAY, NOVEMBER 14 - 3:45PM - 4:45PM

### TRADITIONAL EDUCATION SESSION

**The Office of Institutional Research: A Powerful Partner in Data-Driven Decision Making**  
*Diamond Ballroom II*

Patricia Rissmeyer, Vice President for Student Affairs, Emmanuel College  
Beth Ross, Associate Vice President of Institutional Research/Registrar, Emmanuel College

Student Affairs professionals are skilled at building relationships and leveraging resources. We recognize that data-driven decisions and evidence-based strategies are typically the most effective ones. This program will describe how professionals in Student Affairs and Institutional Research can partner to utilize institutional data to improve the student experience, develop tactics to strengthen student satisfaction, and set goals for increasing retention.

*Assessment Evaluation and Research*  
*Mid-Level Managers, Senior Student Affairs Officers*  
*Show & Tell*

## MONDAY, NOVEMBER 14 - 3:45PM - 4:45PM

### TRADITIONAL EDUCATION SESSION

**Spotlight on Due Process: Court Scrutiny Shifts the Landscape**  
*Emerald Ballroom II*

Seann Kalagher, Associate Dean of Student Affairs, Quinnipiac University  
Beth Devonshire, Director of Community Standards, Bridgewater State University

In the years since the 2011 Office for Civil Rights (OCR) Dear Colleague Letter and the profession-wide response it generated, a great deal of debate and litigation has generated a shift in established precedent involving due process. As the recent Doe v. Brandeis University case clearly demonstrates, courts have placed a renewed focus on institutional due process, and private institutions are at the forefront.

*Values, Philosophy, and History, Law, Policy, and Governance*  
*Mid-Level Managers, Senior Student Affairs Officers*  
*Research Lecture*

## MONDAY, NOVEMBER 14 - 5:00PM - 5:25PM

### MINI SESSION

**The Will to Write: An Assessment of the Writing Readiness and Success of First-Generation Students**

*Endorsed by the Socioeconomic & Class Issues in Higher Education (SCIHE) Knowledge Community*

*Valcour*

Samantha Bruno, Writing Consultant, Merrimack College

What's the first thing that comes to mind when you think about writing? For first-generation students, the answers range from terrifying to boring. Regardless of students' majors, writing is a required competency necessary for success. This session will explore a qualitative study on first-generation students' secondary and postsecondary academic experiences and provide several recommendations for academic support professionals.

*Personal and Ethical Foundations, Student Learning and Development, Advising and Supporting*  
*Faculty Members*  
*Research Lecture*

## MONDAY, NOVEMBER 14 - 5:00PM - 6:00PM

### SELECT EDUCATION SESSION

**'Confianza y Fe': Cultivating Confidence for Leadership Development in Latinx Students**

*Endorsed by the Latino/a Knowledge Community*

*Willsboro*

Donnie Taveras, Student Services Specialist, Year Up Providence  
Connie Cabello, Director Intercultural Affairs, Stonehill College  
Julia Golden, Assistant Director and LGBTQ Liaison, Salem State University  
Alex Cabal, Director Center for Diversity and Social Justice Programs, Wentworth Institute of Technology

Confidence: a skill we look for in colleagues, student leaders and often people we surround ourselves with. It can be an obscure term, but what does it really mean for those in Latinx culture? We will unpack this by defining and exploring relevant theories and by questioning social constructivist ideals of hegemonic leadership.

*Social Justice and Inclusion, Student Learning and Development*  
*Graduate Students, New/Entry-Level Professionals*  
*Roundtable*

# EDUCATIONAL SESSIONS

## MONDAY, NOVEMBER 14 - 5:00PM - 6:00PM

### TRADITIONAL EDUCATION SESSION

**Building Cross Campus Partnerships: Hillel as a Model of Interfaith Cooperation**

*Endorsed by the Religion & Spirituality Knowledge Community*

*Kingsland*

Amy Fisher, University Chaplain/Director of the Interfaith Center, Suffolk University  
Miriam Blue, Assistant Director Hillel Council of New England/Hillel Director, Simmons College

This education session will feature religious life best practices from Hillel and Interfaith Centers to highlight practices for modeling interfaith cooperation. Student Affairs professionals should be aware of campus religious resources and the role religion and spirituality play in the intersectionality of identity for students as well as their implication for on-campus issues such as Title IX, LGBTQ rights, marriage equality, immigration, etc.

*Social Justice and Inclusion, Advising and Supporting  
New/Entry-Level Professionals, Mid-Level Managers  
Workshop*

## MONDAY, NOVEMBER 14 - 5:00PM - 6:00PM

### TRADITIONAL EDUCATION SESSION

**Stay Woke: Raising Awareness and Promoting Social Justice Education on Your (Student) Staff**

*Emerald Ballroom II*

Frederick Carter Jr., Resident Director (Grad), Springfield College  
Ange Concepcion, Director of Residential Education, Wagner College

Student Affairs staffs serve on the front lines on all campuses. Often, they are the first to see and hear the implicit and explicit manifestations of racism, social injustice, etc. This session presents a comprehensive model to educate your staff to become comfortable and prepared to have these difficult conversations.

*Social Justice and Inclusion, Student Learning and Development  
Graduate Students, New/Entry-Level Professionals  
Workshop*

## MONDAY, NOVEMBER 14 - 5:00PM - 6:00PM

### TRADITIONAL EDUCATION SESSION

**Finding Nemo (Nemo is your student who is struggling academically)**

*Amphitheatre*

John Goepfrich, Academic Specialist, Quinnipiac University

*Leadership, Student Learning and Development, Advising and Supporting  
New/Entry-Level Professionals, Mid-Level Managers  
Show & Tell*

## MONDAY, NOVEMBER 14 - 5:00PM - 6:00PM

### TRADITIONAL EDUCATION SESSION

**TPE Prep!**

*Emerald Ballroom III*

Josh Peipock, Associate Director of Residence Life, Rhode Island School of Design  
Daniel Murphy, Area Coordinator, Rhode Island School of Design

The job search process can be overwhelming, draining, and frustrating. Attend this session to prepare for the job search generally and The Placement Exchange specifically. We will review resume and cover letter do's and don'ts, networking, talk about what to expect at TPE and spend some time discussing interview etiquette. We hope to demystify the process and increase confidence!

*Personal and Ethical Foundations, Organizational and Human Resources  
Graduate Students, New/Entry-Level Professionals  
Workshop*



# EDUCATIONAL SESSIONS

## MONDAY, NOVEMBER 14 - 5:00PM - 6:00PM

### TRADITIONAL EDUCATION SESSION

**Dear World & Bentley University: Creating Connection on Campus through Vulnerability and Storytelling**

*Diamond Ballroom I*

Katie Greenman, Dear World

Jessica Kenerson, Director of Student Affairs, Bentley University

Alex Hirs, Assistant Director of Gender Equity & Development, Bentley University

Justin Woodard, Assistant Director of the Residential Center, Bentley University

This session highlights the unique partnership between Bentley University and world-renowned storytelling portrait project *Dear World* in their design of a program featured during orientation that inspired vulnerability and authentic connection across an entire first year class. Join the presenters for an experiential and interactive workshop to learn more about creating an experience that brings students together across identities and boundaries using their own stories.

*Personal and Ethical Foundations, Social Justice and Inclusion  
New/Entry-Level Professionals, Mid-Level Managers  
Workshop*

## MONDAY, NOVEMBER 14 - 5:00PM - 6:00PM

### TRADITIONAL EDUCATION SESSION

**IDEAL Portfolio, The IKEA Effect, And Retention: A Student Engagement Model**

*Emerald Ballroom I*

Paul Serignese, Associate Director of Housing and Residential Life for Residential Engagement, Eastern Connecticut State University

Looking for a NO cost way to increase engagement and retention? IDEAL Portfolio (Individualized Developmental Experiences And Learning) was created to engage and retain high achieving students but is applicable to any population. Learn about foundational theories: the IKEA effect, Cialdini's Psychology of Persuasion, and classic student development theories. Supporting data and ways to implement the program will be discussed.

*Assessment, Evaluation, and Research, Student Learning and Development  
Mid-Level Managers, Senior Student Affairs Officers  
Show & Tell*

## MONDAY, NOVEMBER 14 - 5:00PM - 6:00PM

### TRADITIONAL EDUCATION SESSION

**Perspectives From Faculty of Color on Teaching, Research, and Service Experiences at Predominantly White Universities**

*Diamond Ballroom II*

Tryan McMickens, Assistant Professor and Director, Suffolk University

Vijay Kanagala, Assistant Professor, University of Vermont

Steven Oliver, Assistant Professor, Salem State University

The purpose of our program is to share the experiences of three tenure-track faculty of color at predominantly white institutions with aspiring and current graduate students, student affairs professionals as well as other faculty members who teach in higher education and student affairs programs. In doing so, this session will focus on the experiences of student affairs and higher education faculty who are often overlooked and rarely discussed in the higher education literature. Insights from faculty of color may inspire audience members to seriously consider the pertinent role they play in teaching, advising, and conducting research with graduate students.

*Social Justice and Inclusion, Student Learning and Development  
Graduate Students, Faculty Members  
Panel*

## TUESDAY, NOVEMBER 15 - 9:15AM - 9:40AM

### MINI SESSION

**NASPA, A Year In Review: Getting Involved The Whole Year Round**

*Valcour*

Cory Davis, Coordinator of Student Conduct, Keene State College

Caitie Abrahamson, Assistant Director of Fraternity and Sorority Life, Quinnipiac University

With over 1,500 members it can seem overwhelming to get involved in NASPA Region I, and this feeling can be compounded when thinking about getting involved on the national level. This session will provide a calendar of the leadership and service opportunities open to NASPA members to explore how they can get involved. Participants will also be encouraged to suggest prospective opportunities they would like to see sponsored by NASPA Region I.

*Organizational and Human Resources, Leadership  
New/Entry-Level Professionals, Mid-Level Managers  
Show & Tell*

# EDUCATIONAL SESSIONS

## TUESDAY, NOVEMBER 15 - 9:15AM - 10:15AM

### SELECT EDUCATION SESSION

**It Takes a Campus – an Interactive and Cost-Effective Approach to Veterans Services**  
*Willsboro*

Robert Mayer, Director of Veteran Services, Mount Wachusett Community College

Mount Wachusett Community College (MWCC) transitioned from a grant-funded one-stop (silo) veteran center to an interactive one employing the existing resources of the college. By utilizing internal and external resources, MWCC has been able to not only maintain but expand its level of service to veteran students. Learn the steps taken and how they may apply to your existing or future veteran center.

*Student Learning and Development, Advising and Supporting  
Mid-Level Managers, Senior Student Affairs Officers  
Workshop*

## TUESDAY, NOVEMBER 15 - 9:15AM - 10:15AM

### TRADITIONAL EDUCATION SESSION

**College Students with Disabilities Developing a Sense of Purpose**  
*Emerald Ballroom I*

Annemarie Vaccaro, Associate Professor College Student Personnel Program, University of Rhode Island  
Ezeiel Kimball, Assistant Professor, University of Massachusetts, Amherst  
Peter Troiano, Faculty Member in Counselor Education & Family Therapy, Central Connecticut State University

How do students with disabilities develop a sense of purpose while in college? Without the answer, student affairs professionals cannot effectively support students as they choose a major, career, and develop important life goals. In this session participants will be introduced to, and discuss applications of, a grounded theory model gleaned from a study of 59 college students with disabilities.

*Social Justice and Inclusion, Student Learning and Development, Advising and Supporting*

*Graduate Students, New/Entry-Level Professionals, Mid-Level Managers, Faculty Members  
Research Lecture*

## TUESDAY, NOVEMBER 15 - 9:15AM - 10:15AM

### TRADITIONAL EDUCATION SESSION

**The Drop-Out Decisions of Latino College Students**  
*Endorsed by the Socioeconomic & Class Issues in Higher Education (SCIHE) Knowledge Community & the Latino/a Knowledge Community*  
*Amphitheatre*

Dennis Camacho, Dean for The Center for Academic Success and Enrichment (CASE), MCPHS University

Latinos are officially the #1 population enrolling in American colleges and universities but only approximately a third are graduating. Scholarly research has been conducted on the factors that mold their collegiate experience and effects on retention. This presentation will expose audience members to current trends, past research, and provide the opportunity for participants to learn about best practices intended to reverse this trend.

*Personal and Ethical Foundations, Values, Philosophy, and History, Social Justice and Inclusion, Student Learning and Development, Advising and Supporting  
Graduate Students, New/Entry-Level Professionals, Mid-Level Managers, Senior Student Affairs Officers, Faculty Members  
Workshop*

## TUESDAY, NOVEMBER 15 - 9:15AM - 10:15AM

### TRADITIONAL EDUCATION SESSION

**Discomfort, Shame, and Shared Experience: Improving Inclusion Programs and Ourselves**  
*Shelburne*

Josiah Harris-Adam, Assistant Director of Student Activities, Lesley University

This program will share the creation and practices of the CommonLYNX Retreat, a peer education weekend for 40-50 participants. The curriculum learning outcomes focus on multiculturalism and inclusion with an underlying emphasis on empathy. The retreat uses current social justice issues to educate students on specific areas of privilege, oppression, and intersectionality. The lessons and activities are designed to instill in students recognition of self-shame coupled with a foundational sense of empathy. Student leaders create an environment in which students are confronted with uncomfortable realities of everyday oppression, followed by conversation and reflection in which participants share and relate to one another's personal experiences. The mutual understanding and solidarity formed from these activities and conversations inform students to be better citizens of their campuses and their communities. As practitioners and role models it is vital for us to embody the principles of self-awareness and empathy for the sake of our students and colleagues.

*Social Justice and Inclusion, Student Learning and Development  
New/Entry-Level Professionals  
Show & Tell*

# EDUCATIONAL SESSIONS

## TUESDAY, NOVEMBER 15 - 9:15AM - 10:15AM

### TRADITIONAL EDUCATION SESSION

**Bringing Charism to the Title IX Process**

***Diamond Ballroom I***

Kelly Golden, Assistant Dean of Student Affairs /Title IX Deputy, Regis College

The Title IX process is one that can be stressful, confusing, and traumatizing for both reporting and alleged parties. True to our mission of *Care of the Dear Neighbor* at Regis, we feel it is important to allow all students to be seen and heard throughout the process. Participants will learn how we're able to on-board nearly 30 CARE Advisors from across campus, how they fit into our investigation process, and steps for implementing similar supports on their own campuses.

*Values, Philosophy, and History, Law, Policy, and Governance, Social Justice and Inclusion*

*Mid-Level Managers, Senior Student Affairs Officers*

*Show & Tell*

## TUESDAY, NOVEMBER 15 - 9:15AM - 10:15AM

### TRADITIONAL EDUCATION SESSION

**Working with Students on the Autism Spectrum: Challenges and Opportunities**

***Endorsed by the Wellness & Health Knowledge Community***

***Emerald Ballroom II***

Lee Burdette Williams, Director of Higher Education Training and Development, College Autism Network

Kyle Reardon, Assistant Director, Mansfield Hall

Each year, more students with a diagnosis of Autism Spectrum Disorder are coming to our campuses. They often face academic, social, behavioral and medical challenges, all of which may impact their ability to thrive as students. This session is designed for residence life, conduct, student activities and other professionals seeking strategies for working effectively with these students.

*Social Justice and Inclusion, Advising and Supporting*

*New/Entry-Level Professionals, Mid-Level Managers*

*Workshop*

## TUESDAY, NOVEMBER 15 - 9:15AM - 10:15AM

### TRADITIONAL EDUCATION SESSION

**(Still) Stuck in the Middle With You**

***Emerald Ballroom III***

Alison Black, Assistant Dean of Student Affairs, Olin College of Engineering

Rachel Lucking, Assistant Dean for Campus Engagement, Framingham State University

John Silveria, Assistant Dean of Students, Suffolk University

Tony Montalbano, Associate Director of Housing and Residential/ Commuter Life, University of New England

Kristin Ridge, Director of Residence Life, Bryant University

Linda Brown, Associate Dean of Students, MCPHS University

Are you a seasoned mid-level professional seeking professional development fulfillment? We heard you! This session is a follow-up to a program from last fall during which the needs/interests of mid/senior level professionals were discussed. Come and join the Steering Committee as we share the findings from the member survey and discuss the topics relevant to YOU! (Please Note: participation in last year's program not necessary.)

*Assessment, Evaluation, and Research, Leadership*

*Mid-Level Managers, Senior Student Affairs Officers*

## TUESDAY, NOVEMBER 15 - 9:15AM - 10:15AM

### TRADITIONAL EDUCATION SESSION

**New American President, New Educational Policies**

***Diamond Ballroom II***

Richard DeCapua Ed.D., Associate Dean of Students & Adjunct Faculty, Boston College

This program will invite participants to learn, explore, and discuss how the new American Presidency will inevitably transform higher education. From student debt relief to issues of access and free speech on campus, there has never been an election with so much at stake for the student affairs profession.

*Law, Policy, and Governance, Organizational and Human Resources, Leadership, Student Learning and Development*

*Graduate Students, New/Entry-Level Professionals, Mid-Level Managers, Senior Student Affairs Officers, Faculty Members*

*Workshop*



# EDUCATIONAL SESSIONS

## TUESDAY, NOVEMBER 15 - 9:15AM - 10:15AM

### TRADITIONAL EDUCATION SESSION

**Footing the Bill: Creating a Student-Centered Damage Billing Process**  
*Kingsland*

Sarah Thomas, Residence Director, Bentley University  
Justin Woodard, Assistant Director- Residential Center, Bentley University  
Jonathan "Paco" Payne, Residence Director, Bentley University  
Kathryn Keyes, Associate Director- Residential Center, Bentley University

In Student Affairs we are charged with making processes more student-centered. Considering the increase in cost, Bentley University re-imagined the damage billing process to compliment students' experiences by using effective teams and StrengthsFinder. Audience members will gain an understanding of a student-centered process and leave with materials for future applications. #LivingatBentley #NASPA16R1

*Organizational and Human Resources, Student Learning and Development*  
*New/Entry-Level Professionals, Mid-Level Managers*  
*Show & Tell*

## TUESDAY, NOVEMBER 15 - 10:45AM - 11:10AM

### MINI SESSION

**Got Skills? Use Them!**  
*Valcour*

Kat Dougherty, Director of Residential Life, Franklin Pierce University

There are the skills we always talk about like listening, leadership, communication and teambuilding. But what about the skills that make you genuinely unique? I can paint, rock climb, sing, dance and write code. This presentation will outline the importance of recognizing your unique skill set and help you think about incorporating your passions into your work.

*Personal and Ethical Foundations, Leadership*  
*Graduate Students, New/Entry-Level Professionals*  
*Workshop*

## TUESDAY, NOVEMBER 15 - 10:45AM - 11:45AM

### SELECT EDUCATION SESSION

**Opportunities for Internationalization on Campus and Abroad!: Reflections of an Accidental Tourist**  
*Willsboro*

Byron P. McCrae, Vice President for Student Affairs & Dean of Students, Hampshire College

Student affairs professionals contribute to campus internationalization efforts in multiple ways, but these efforts may not be acknowledged or appreciated. This session will enable participants to identify opportunities to support campus initiatives while pursuing their own professional development goals. The NASPA International Education Exchange and Fulbright International Education Administrators Seminar will be amongst the opportunities highlighted.

*Values, Philosophy, and History, Organizational and Human Resources*  
*Mid-Level Managers, Senior Student Affairs Officers*  
*Show & Tell*

## TUESDAY, NOVEMBER 15 - 10:45AM - 11:45AM

### TRADITIONAL EDUCATION SESSION

**The Role of Mentoring in Pathways to the SSAO Role**  
*Emerald Ballroom III*

Barbara LoMonaco, Vice President for Student Affairs, Salve Regina University  
Nancy Crimmin, Senior Vice President and Chief Academic and Student Affairs Officer, Becker College  
Pauline Dobrowski, Vice President for Student Affairs, Stonehill College  
Mary Jo Gonzales, Interim Vice President for Student Affairs, University of Rhode Island  
Jacqueline Peterson, Vice President for Student Affairs, College of the Holy Cross  
Betsy Newman, Senior Vice President for Student Enrollment and Engagement, Berklee College of Music

While significant strides have been made for women in the SSAO role, myriad challenges remain: managing professional and personal roles, pay inequity, and the "glass ceiling". For these reasons, mentoring relationships can be valuable tools for women in the SSAO role or those aspiring to the role. Scholarly literature (Kram & Higgins, 2008) points to a paradigm shift from a one-on-one mentoring model to a "developmental network" model in which multiple individuals provide developmental support. Panelists will present on the role of being a mentor or a mentee in their pathway to the SSAO role, the importance of developmental networks, and lessons learned along the way.

*Personal and Ethical Foundations, Leadership*  
*New/Entry-Level Professionals, Mid-Level Managers*  
*Panel*

# EDUCATIONAL SESSIONS

## TUESDAY, NOVEMBER 15 - 10:45AM - 11:45AM

### TRADITIONAL EDUCATION SESSION

**Choosing My Race? Multiracial Identity Development and Racial Fluidity**

*Endorsed by the Multiracial Knowledge Community*

***Emerald Ballroom I***

Felina Kelly, Residence Director, Bentley University

Is racial identity inherited? Is race a choice? Who gets to choose which race people identify with? In this session we will explore the concept of race through a multiracial identity development lens. We will also discuss how the fluidity of racial identity for multiracial students impacts higher education practices.

*Values, Philosophy, and History, Social Justice and Inclusion, Student Learning and Development*

*Graduate Students, New/Entry-Level Professionals, Mid-Level Managers, Senior Student Affairs Officers, Faculty Members*  
*Roundtable*

## TUESDAY, NOVEMBER 15 - 10:45AM - 11:45AM

### TRADITIONAL EDUCATION SESSION

**Understanding the Realities of Black Transgender Students**

*Endorsed by the Gender & Sexuality Knowledge Community*

***Emerald Ballroom II***

Keith Waak, Assistant Director Off-Campus Housing, University of Massachusetts, Boston

Transgender people face extreme adversity. However, the intersections of subordinate identities may place Black transgender undergraduate students at higher risks of negative situations such as sexual assault and violence than their white counterparts. This session will examine the outcome of when race, gender, and age meet. Theories, research, and practices will be explored to better support trans communities of color.

*Social Justice and Inclusion*

*New/Entry-Level Professionals, Mid-Level Managers*  
*Research Lecture*

## TUESDAY, NOVEMBER 15 - 10:45AM - 11:45AM

### TRADITIONAL EDUCATION SESSION

**Intersections of Social Class & Fraternity/Sorority Life**

***Shelburne***

Kim Monteaux De Freitas, Fraternity & Sorority Life, University of Vermont

Andrew Meek, Fraternity & Sorority Life, University of Vermont

As fraternity/sorority life professionals how do we enter into conversations regarding social class? Is it our place to ask how one pays for their dues, if they can afford the new iPad, Sperry's or Lilly Dress? Come be a part of a meaningful conversation about the idea of covering and hear tips of how to continue the conversation about social class back on your campus. This program will contribute to your knowledge skills of the invisible and taboo topic of social class. Tips will be shared and conversations will be had applicable to all higher education professionals.

*Values, Philosophy, and History, Social Justice and Inclusion*

*Graduate Students, New/Entry-Level Professionals*  
*Workshop*

## TUESDAY, NOVEMBER 15 - 10:45AM - 11:45AM

**Do Unto Your Direct Reports As You Do Unto Your Students**

***Diamond Ballroom II***

Stefano Fasulo, Associate Director for Campus Life, Quinnipiac University

Audrey Heins, Assistant Director of Graduate Student Affairs, Quinnipiac University

Very few higher education graduate programs teach courses expressly on how to supervise and even fewer HR departments offer supervision training on the first day of work. Yet supervision is a necessary skill that will be crucial for upward professional mobility. This session explores the battle of management and supervision versus leadership and mentorship, because these ideas are actually not dichotomous at all. Instead these ideas can be, and arguably should be, practiced concurrently, but it's not easy. Our goal is to introduce four skill sets/knowledge bases that will not only help you become a better supervisor, but hopefully a better mentor as well.

*Organizational and Human Resources*

*Graduate Students, New/Entry-Level Professionals, Mid-Level Managers*  
*Workshop*

# EDUCATIONAL SESSIONS

## TUESDAY, NOVEMBER 15 - 10:45AM - 11:45AM

### TRADITIONAL EDUCATION SESSION

**Understanding and Utilizing the ACPA/NASPA Professional Competency Areas for Student Affairs Educators**

***Kingsland***

Rozana Carducci, Assistant Professor and Program Coordinator, Salem State University  
Susan Marine, Assistant Professor & Program Coordinator, Merrimack College

This program provides an overview of the 2015 ACPA/NASPA Professional Competency Areas for Student Affairs Educators. Facilitators will focus on helping the audience understand the importance of the competency areas to the student affairs profession and on examining best practices in the application and utilization of the competencies. Participants will also learn about the recently released competency rubrics.

*Values Philosophy and History*

*New/Entry-Level Professionals, Mid-Level Managers  
Workshop*

## TUESDAY, NOVEMBER 15 - 10:45AM - 11:45AM

### TRADITIONAL EDUCATION SESSION

**Considering Class & Capital in Student Engagement Opportunities**

***Diamond Ballroom I***

Sonja Ardoin, Program Director & Clinical Assistant Professor, Boston University

Class identity is more than just socioeconomic status. Some poor and working class students can be limited in their engagement because they feel unwelcome based on various types of capital – financial, cultural, social, linguistic, and/or navigational. Join this session to explore class identity (Yosso, 2005) and learn how your office or department can be more inclusive in its engagement opportunities.

*Social Justice and Inclusion, Student Learning and Development*

*New/Entry-Level Professionals, Mid-Level Managers  
Workshop*

## TUESDAY, NOVEMBER 15 - 10:45AM - 11:45AM

### TRADITIONAL EDUCATION SESSION

**A BIT of Insight: Best Practices for Behavior Intervention Teams**

***Endorsed by the Campus Safety & Violence Prevention Knowledge Community***

***Amphitheatre***

Will Johnson, Associate Dean of Students, Fairfield University  
Angelo Simoni, Director Office of Judicial Affairs, Eastern Connecticut State University  
Erica Peryga, Dean of Students, Post University

Behavioral intervention teams have been established on many campuses and come in a variety of forms. Most teams are established to respond to reports of disruptive, problematic, and concerning behaviors exhibited by students inside and outside of the classroom. Behavioral intervention teams can be critical in building supportive, inclusive, and safe communities. Join us in this session and explore how behavioral interventions teams are fulfilling important needs on college campuses.

*Technology, Advising and Supporting*

*Mid-Level Managers, Senior Student Affairs Officers  
Workshop*

## TUESDAY, NOVEMBER 15 - 1:15PM - 1:40PM

### MINI SESSION

**Celebrating 180 Years: UVM Fraternity/Sorority Life**

***Valcour***

Kim Monteaux De Freitas, Fraternity & Sorority Life, University of Vermont  
Andrew Meek, Fraternity & Sorority Life, University of Vermont

During this short session we will provide a list similar to BuzzFeed with UVM Fraternity & Sorority history nuggets. This session will be set up in a fun informational style providing participants with new information and takeaways on our 180 year old community. Participants will learn about notable alumni such as philosopher John Dewey, First Lady Grace Coolidge, and also learn interesting facts about so much more. Participants will also leave with a map of locations to check out while in town!

*Values, Philosophy, and History*

*New/Entry-Level Professionals  
Show & Tell*

# EDUCATIONAL SESSIONS

## TUESDAY, NOVEMBER 15 - 1:15PM - 2:15PM

### SELECT EDUCATION SESSION

**Minute to Win It: Using Learning Exercises in Conduct Meetings**

***Willsboro***

Erica Burke, Residence Director, Plymouth State University

Marissa Lischinsky, Interim Assistant Director of Residential Life, Plymouth State University

Participants will learn how to enhance student learning within conduct meetings by utilizing reflection techniques. By understanding how to develop, implement, and assess learning exercises, participants will be able to design learning exercises to meet the needs of students and allow the conduct process to be a creative outlet for learning in addition to policy review.

*Advising and Supporting*

*Graduate Students, New/Entry-Level Professionals*

*Show & Tell*

## TUESDAY, NOVEMBER 15 - 1:15PM - 2:15PM

### TRADITIONAL EDUCATION SESSION

**The Orlando Tragedy: Our Collective Response**

***Endorsed by the Latino/a Knowledge Community***

***Endorsed by the Gender & Sexuality Knowledge Community***

***Emerald Ballroom III***

Brianne McDonough, Program Manager, Guided Pathways to Success in STEM, Northern Essex Community College

Eric Crumrine, Associate Director, Residence Education, Berklee College of Music

Donnie Taveras, Student Services Specialist, Year Up Providence

During this moderated panel discussion, panelists will share their perspectives on the Orlando tragedy, discuss institutional response, and identify next steps for fostering safe and inclusive campuses. As this was a targeted attack towards members of LGBT, Latinx, and QPOC communities, participants will discuss how intersecting identities influence our professional lives and implications for creating welcoming campus communities.

*Personal and Ethical Foundations, Social Justice and Inclusion*

*Mid-Level Managers, Senior Student Affairs Officers*

*Panel*

## TUESDAY, NOVEMBER 15 - 1:15PM - 2:15PM

### TRADITIONAL EDUCATION SESSION

**Title IX and Mental Health: Areas of Overlap and Collaboration**

***Amphitheatre***

Corey Kelly, Assistant Dean of Students, Boston College

Caroline Davis, Assistant Dean for Student Outreach and Support, Boston College

Universities may find that students participating in on-campus Title IX investigations as complainants are also in need of case management services due to mental health concerns. This program will provide an overview of institutional considerations in these circumstances. Through the examination of case examples, presenters will discuss areas of collaboration and strategies for working as a team to support students.

*Law, Policy, and Governance*

*New/Entry-Level Professionals, Mid-Level Managers*

*Show & Tell*

## TUESDAY, NOVEMBER 15 - 1:15PM - 2:15PM

### TRADITIONAL EDUCATION SESSION

**Reframing Student Retention: A New Model for Student Success**

***Diamond Ballroom II***

Dr. Sami Nassim, Director of Multicultural Programs and University Retention, Salve Regina University

Faced with declining retention in first year students, a university introduced an innovative model for student success. Rather than looking at each aspect of a student's life in isolation, this model identifies seven major demographical factors that contribute to student attrition and looks at them holistically. Within two years, this model has produced incredible results by increasing retention by 7%.

*Assessment, Evaluation, and Research, Social Justice and Inclusion*

*Mid-Level Managers, Senior Student Affairs Officers*

*Workshop*



# EDUCATIONAL SESSIONS

## TUESDAY, NOVEMBER 15 - 1:15PM - 2:15PM

### TRADITIONAL EDUCATION SESSION

#### Rethinking Activism: Lessons from College Students with Disabilities

##### *Emerald Ballroom II*

Ezekiel Kimball, Assistant Professor, University of Massachusetts Amherst  
Annemarie Vaccaro, Associate Professor, University of Rhode Island  
Peter Troiano, Faculty Member in Counselor Education & Family Therapy, Central Connecticut State University

Models of activism deemphasize the resistance behaviors of students from minoritized populations if they do not conform to prototypical standards of behavior. In this session, we share practical lessons from a grounded theory study of 59 college students with disabilities and explore how their alternative forms of activism should be not only recognized but fostered by student affairs professionals.

*Social Justice and Inclusion, Student Learning and Development*

*New/Entry-Level Professionals, Mid-Level Managers*

*Workshop*

## TUESDAY, NOVEMBER 15 - 1:15PM - 2:15PM

### TRADITIONAL EDUCATION SESSION

#### Move Over Millennials! Engaging with Generation Z on College Campuses

##### *Kingsland*

Katie Stango, Assistant Director for Campus Programs, University of Vermont  
Eric Gudmundson, Campus Consultant, Campus Labs

In an increasingly mobile world, how do we engage students with so many means of communication at their fingertips? Is Facebook over? Do students actually check email? Are we wasting money printing posters? This interactive session will focus on institutional best practices and time will be set aside to flesh out issues specific to participants and work on productive solutions.

*Student Learning and Development, Technology*

*Graduate Students, New/Entry-Level Professionals, Mid-Level Managers*

*Workshop*

## TUESDAY, NOVEMBER 15 - 1:15PM - 2:15PM

### TRADITIONAL EDUCATION SESSION

#### Student Conduct at Orientation: What to Say; How to Share It

##### *Shelburne*

Mark Metevier, Director Student Center & Student Activities, Curry College  
Lisa MacDonald, Assistant Vice President for Student Affairs, Curry College

Who wants to get suspended? This session focuses on creative ways to engage students at Orientation while providing key information about your institution's student conduct process. Transparency through numbers, likely outcomes for students found responsible, and what to do if you're documented are all part of Curry College's orientation presentation called "How to Stay Out of Trouble without Really Trying".

*Student Learning and Development*

*New/Entry-Level Professionals, Mid-Level Managers*

*Show & Tell*

## TUESDAY, NOVEMBER 15 - 1:15PM - 2:15PM

### TRADITIONAL EDUCATION SESSION

#### Cultivating an Engaged Workplace Environment

##### *Diamond Ballroom I*

Pauline Dobrowski, Vice-President for Student Affairs, Stonehill College  
Jenn Kosses, Assistant Dean of Students, Wentworth Institute of Technology

We often talk about the positive impact of high student engagement, but we rarely speak about the benefits of cultivating an engaged workplace environment for our staff members. What does it mean to be an "engaged employee" and how do these folks contribute to student success and the overall well being of the institution? Grounded in Gallup research, this session will provide an opportunity to hear about the factors that contribute high levels of employee engagement and discuss strategies you can utilize to contribute to your staff's overall success.

*Organizational and Human Resources, Leadership*

*Mid-Level Managers, Senior Student Affairs Officers*

*Workshop*

# EDUCATIONAL SESSIONS

## TUESDAY, NOVEMBER 15 - 1:15PM - 2:15PM

### TRADITIONAL EDUCATION SESSION

**Están Presents: Realities of the Undocumented Student in U.S. Higher Education**

***Emerald Ballroom I***

Sarah Childs, Assistant Director, ALANA Student Center, University of Vermont  
Eloisa Amador Lara, First-Year Graduate Student, Higher Education & Student Affairs Administration Program, University of Vermont  
Rezwana Zafar, Coordinator of Assessment & Retention, ALANA Student Center, University of Vermont

Unafraid and unapologetic is how our undocumented students should be able to communicate to us; yet this is not the reality for many. As institutions of higher learning, we need to move beyond conversations that question the presence of undocumented students on our campus to advocating, promoting and providing student services. An estimated 7,000 to 13,000 undocumented students are enrolled in colleges across the country (Educators for Fair Consideration, 2012). Many of these students are prone to experiencing stress that results because of their status and the perceived consequences of self-disclosure are enough to negatively impact students academically, socially and psychologically. As student affairs professionals, it is imperative that we address potential services or parallel processes that could be developed for undocumented student success and overall wellbeing.

*Leadership, Social Justice and Inclusion (SJI)*

*Mid-level Manager, Senior Student Affairs Officers*

*Workshop*

## TUESDAY, NOVEMBER 15 - 3:00PM - 3:25PM

### MINI SESSION

**"Choosing Wrong" and Crafting Your "Self" as a Student Affairs Professional**

***Valcour***

Megan Sniffin, Residence Coordinator, University of Saint Joseph

Authenticity is important in any field, but especially in Student Affairs. Inspired by "Choosing Wrong" from *This American Life* and Creative Non-Fiction theory, this program will challenge graduate students and new professionals to shape their "self" in the beginning of their personal and professional development. Participants will be challenged to reassess and create their own path in Student Affairs.

*Personal and Ethical Foundations*

*Graduate Students, New/Entry-Level Professionals*

*Workshop*

## TUESDAY, NOVEMBER 15 - 3:00PM - 4:00PM

### SELECT EDUCATION SESSION

**Beyond Borders: The Afro-Caribbean International Student Experience**

***Willsboro***

Abigail Smith, Assistant Residence Hall Director and HESA Student, University of Connecticut  
Chris Campbell, Assistant Resident Director and HESA Graduate Student, University of Vermont

Afro-Caribbean international students are often forced into complex dialogues around their race and ethnicity, which then confines them to negotiate their Afro-Caribbean experience and identity with American labels and definitions. This interactive presentation and discussion, grounded in supporting literature and personal anecdotes, will provide student affairs professionals with the necessary language and tools to best engage Afro-Caribbean International Students.

*Social Justice and Inclusion, Student Learning and Development*

*Graduate Students, New/Entry-Level Professionals*

*Research Lecture*

## TUESDAY, NOVEMBER 15 - 3:00PM - 4:00PM

### TRADITIONAL EDUCATION SESSION

**Socializing Newcomers to Student Communities: What Tactics Work to Promote Adjustment?**

***Shelburne***

Adam McCready, Higher Education PhD Candidate, Boston College

There are concerns about how newcomers are socialized into student communities (e.g., retention). While researchers have examined outcomes related to newcomers' experiences, there is no research on student community socialization processes. By attending this session, attendees will be able to describe Van Maanen and Schein's theory of organizational socialization, and identify socialization tactics that promote newcomer adjustment to student communities.

*Student Learning and Development, Advising and Supporting*

*New/Entry-Level Professionals, Mid-Level Managers*

*Research Lecture*

# EDUCATIONAL SESSIONS

## TUESDAY, NOVEMBER 15 - 3:00PM - 4:00PM

### TRADITIONAL EDUCATION SESSION

**Centering Women of Color: The Journey of Researching, Writing, and Inspiring Action**  
*Emerald Ballroom III*

Annemarie Vaccaro, Associate Professor, College Student Personnel Program, University of Rhode Island  
Melissa Camba-Kelsay, Coordinator, Center for Student Leadership Development, University of Rhode Island

Join a conversation about the process of collaborating across academic and student affairs lines to research and write about the experiences of undergraduate students in a unique campus racial counterspace. Participants will get a sneak peek at the new book: *Centering Women of Color in Academic Counterspaces: A Critical Race Analysis of Teaching, Learning, and Classroom Dynamics* (Lexington, 2016).

*Assessment, Evaluation, and Research, Social Justice and Inclusion*  
*Graduate Students, New/Entry-Level Professionals, Mid-Level Managers, Faculty Members*  
*Research Lecture*

## TUESDAY, NOVEMBER 15 - 3:00PM - 4:00PM

### TRADITIONAL EDUCATION SESSION

**It's Not a Joke: Bias Response on Our Campuses**  
*Diamond Ballroom II*

Eleanor Daugherty, Associate Vice President and Dean of Students, University of Connecticut  
Hans D. Rhynhart, Interim Director of Public Safety and Chief of Police, University of Connecticut  
Christine Wilson, Assistant Vice President of Student Affairs and Director of Student Activities, University of Connecticut

College and university campuses are built upon ideals of diversity, inclusion, free expression and discovery through inquiry. These values are severely compromised when bias related incidents occur on campuses and challenge a student's sense of belonging or directly alienate and estrange identities within our diverse communities. This panel explores the development of the Bias Response Protocol at UConn in 2015 and its impact upon developing collaborative incident response, community engagement, and increased institutional awareness.

*Values, Philosophy, and History, Social Justice and Inclusion, Advising and Supporting*  
*Mid-Level Managers, Senior Student Affairs Officers*  
*Panel*

## TUESDAY, NOVEMBER 15 - 3:00PM - 4:00PM

### TRADITIONAL EDUCATION SESSION

**Higher Education Support for Foster Care Alumni**  
*Endorsed by the Socioeconomic & Class Issues in Higher Education (SCIHE) Knowledge Community*  
*Emerald Ballroom I*

Jennifer Schoen, Director, Opportunity Scholarship and Outreach Programs, Northeastern University  
Judi Alperin King, Executive Director, The Wily Network

Foster care alumni in college present unique challenges. The graduation rate - less than 3% - is dismal. Presenters will share a model partnership between Boston-area colleges and The Wily Network, a non-profit. This collaboration seeks to improve graduation outcomes for students with foster care experience attending four-year residential colleges through the combined efforts of student affairs professionals and coaching experts.

*Social Justice and Inclusion, Student Learning and Development*  
*Senior Student Affairs Officers, Faculty Members*  
*Show & Tell*

## TUESDAY, NOVEMBER 15 - 3:00PM - 4:00PM

### TRADITIONAL EDUCATION SESSION

**Creativity Within Crisis: Lessons learned from Responding to a Complaint of Discrimination or Harassment**  
*Emerald Ballroom II*

Karen Donoghue, Dean of Students, Fairfield University  
Thomas Pellegrino, Vice President of Student Affairs, Fairfield University

In February 2016, a group of Fairfield University students held an off-campus theme party that encouraged students to dress in "ghetto style" to gain attendance. Within 24 hours, pictures from the party went viral hitting local and national news outlets. This session will unpack the University's response that includes triaging with students, working with the media and holding students accountable through the code of conduct process.

*Personal and Ethical Foundations, Law, Policy, and Governance, Leadership, Social Justice and Inclusion*  
*Mid-Level Managers, Senior Student Affairs Officers*  
*Workshop*

# EDUCATIONAL SESSIONS

## TUESDAY, NOVEMBER 15 - 3:00PM - 4:00PM

### TRADITIONAL EDUCATION SESSION

**The Integration of Service Into the Student Experience: A Discussion for Community Engagement Specialists and Partners Across Campus**

**Kingsland**

Lucas Malo, Director of Community Service, Brandeis University  
Brian Quigley, Community Service Specialist, Brandeis University

As we work to support an ever-changing and diverse student body, community engagement is a powerful resource. Many campuses are also responding to societal pressures to produce graduates prepared to contribute to society at a level that justifies the enormous cost of education. Our discussion will explore ways to integrate and intersect community engagement through a variety of departmental programs.

*Values, Philosophy, and History, Assessment, Evaluation, and Research, Organizational and Human Resources, Leadership, Social Justice and Inclusion, Student Learning and Development, Advising and Supporting  
New/Entry-Level Professionals, Mid-Level Managers  
Roundtable*

## TUESDAY, NOVEMBER 15 - 3:00PM - 4:00PM

### TRADITIONAL EDUCATION SESSION

**Hello from the Other Side: What matters in the job search?**

**Diamond Ballroom I**

Sarah Thomas, Residence Director, Bentley University

Ever wonder what matters and what doesn't in the job search? Constantly trying to figure out what questions to ask or how to make your resume stand out? Come learn how to effectively demonstrate your employability skills (soft skills), practical skills and most importantly your authentic self in the job search process. #NASPA16R1

*Personal and Ethical Foundations, Student Learning and Development  
Graduate Students  
Workshop*

## TUESDAY, NOVEMBER 15 - 3:00PM - 4:00PM

### TRADITIONAL EDUCATION SESSION

**More Than a Paycheck! Implementing a Professional Development Program for Student Employees**

**Amphitheatre**

Shelby Hinkle Smith, Senior Associate Director of Campus Recreation Programs, University of Vermont  
Cyrus Carey, Assistant Director of Campus Recreation Operations, University of Vermont  
Jordan Olson, Assistant Director of Campus Recreation Intramural Sports, University of Vermont

This session will provide an overview of a comprehensive student development program, which focuses on increasing the perceived value of a job with Campus Recreation by guiding students through thinking critically about their professional and personal goals, skills, and how these relate to and can be developed through their work with Campus Recreation. Attendees will leave with strategies for implementation.

*Organizational and Human Resources, Leadership, Student Learning and Development, Advising and Supporting  
New/Entry-Level Professionals, Mid-Level Managers  
Show & Tell*

## WEDNESDAY, NOVEMBER 16 - 8:45AM - 9:10AM

### MINI SESSION

**Who Says You Can't Go Home?**

**Valcour**

Caroline Horne, Area Coordinator, Mount Holyoke College  
Kristoffer Tangen, Graduate Assistant Hall Director, The University of Rhode Island  
Finding summer assistantships can provide opportunities to broaden horizons, enhance a resume, and make a name for oneself. Our program will explore the benefits and challenges associated with returning to work at your undergraduate institution as a graduate student. We will share our story of coming back to our Alma Mater and working with familiar faces under different titles.

*Personal and Ethical Foundations  
Graduate Students  
Show & Tell*

# EDUCATIONAL SESSIONS

## WEDNESDAY, NOVEMBER 16 - 8:45AM - 9:45AM

### SELECT EDUCATION SESSION (MAX 20 PEOPLE)

**Planes, Trains, Ferries, & Escalators: Student Affairs in China**

**Willsboro**

John Denio, Associate Dean of Student Affairs, Bryant University  
Megan Fox, Special Assistant to VPSA/Dean of Students, Bryant University  
John Saddlemire, VPSA/Dean of Students, Bryant University

Bryant University has a campus in Zhuhai, China. A team of Bryant Student Affairs administrators visited the Zhuhai campus and another Chinese University earlier this year. We will share our experiences as well as compare student affairs best practices between US higher education and our counterparts in China. This presentation is meant to be interactive with participants.

*Leadership, Social Justice and Inclusion*

*Mid-Level Managers, Senior Student Affairs Officers*

*Show & Tell*

## WEDNESDAY, NOVEMBER 16 - 8:45AM - 9:45AM

### TRADITIONAL EDUCATION SESSION

**Telling Our Stories: Creating a Co-curricular Development Model to Articulate the Importance of Student Affairs**

**Shelburne**

Alex Hirs, Assistant Director of Gender Equity & Development, Bentley University  
Erin Kelley, Director of Student Conduct & Development, Bentley University  
Tony Martin, Associate Director of the Residential Center, Bentley University

Given the rising costs of higher education, student affairs educators face the task of simultaneously justifying the existence of place-based institutions and validating the purpose of our work. In this program, participants will learn how Bentley University has developed a Co-Curricular Development Model to assess and explain student affairs' role in facilitating learning outside of the classroom.

*Values, Philosophy, and History, Assessment, Evaluation, and Research, Leadership, Student Learning and Development*

*Mid-Level Managers, Senior Student Affairs Officers*

*Show & Tell*

## WEDNESDAY, NOVEMBER 16 - 8:45AM - 9:45AM

### TRADITIONAL EDUCATION SESSION

**Fresh Check Day: A Fresh Approach to Campus Mental Health Promotion**

**Endorsed by the Wellness & Health Knowledge Community**

**Diamond Ballroom I**

Alexandra Katz, Outreach Coordinator, Jordan Porco Foundation

Suicide is the second leading cause of death among college students. Fresh Check Day (FCD) is a mental health promotion and suicide prevention program successfully held at over 50 colleges and universities. Using FCD as a framework, we will interactively explore methods and strategies to promote mental health, reach more students, reduce stigma, and increase help seeking behaviors. #FreshCheckDay #NASPA16R1

*Assessment, Evaluation, and Research, Social Justice and Inclusion*

*New/Entry-Level Professionals, Mid-Level Managers*

*Show & Tell*

## WEDNESDAY, NOVEMBER 16 - 8:45AM - 9:45AM

### TRADITIONAL EDUCATION SESSION

**Strengths Based Education: Can it Lead to Higher Retention Rates?**

**Kingsland**

Alissa Lynch, Assistant Director of Residence Life and Housing, Emmanuel College

By coming to this program you will discover how Strengths Based Education can aid in creating stronger campus connections, leading to higher retention rates among college students. The basis for this presentation comes from an initiative put forth at Emmanuel College to help students with unrealized potential who were not reaching their academic, social, or leadership goals.

*Student Learning and Development, Advising and Supporting*

*New/Entry-Level Professionals, Mid-Level Managers*

*Show & Tell*



# EDUCATIONAL SESSIONS

## WEDNESDAY, NOVEMBER 16 - 8:45AM - 9:45AM

### TRADITIONAL EDUCATION SESSION

**Rising to the Challenge: the Roles of Administrators of Color in Charged Campus Climates**

***Emerald Ballroom III***

Byron P. McCrae, Vice President for Student Affairs & Dean of Students, Hampshire College  
Enku Gelaye, Vice Chancellor for Student Affairs and Campus Life, University of Massachusetts Amherst

Alex Vasquez, Dean of Students, Amherst College

Cerri Banks, Vice President for Student Affairs and Dean of the College, Mount Holyoke College

Student Affairs administrators of color face particular challenges because they are often expected to manage racial discord on campus. The negotiation of institutional priorities and stances with student expectations and demands can take a personal and professional toll. This session will allow administrators to explore these challenges and share strategies for success and longevity while helping create positive campus change.

*Personal and Ethical Foundations, Leadership*

*Mid-Level Managers, Senior Student Affairs Officers*

*Panel*

## WEDNESDAY, NOVEMBER 16 - 8:45AM - 9:45AM

### TRADITIONAL EDUCATION SESSION

**Is Your Campus Family Friendly? Research Results and Toolkit Regarding Students Who Are Parents**

***Diamond Ballroom II***

Joan Karp, Senior Research Associate PERG, Endicott College

Debra Smith, Director PERG, Endicott College

A quarter of all undergraduate students are raising dependent children, including over one million at 4-year institutions. Unfortunately, the targeted resources that could help student parents succeed are largely lacking. The Program Evaluation and Research Group will share their study, "Baccalaureate Student Parent Programs and the Students They Serve", and their Family Friendly Campus Toolkit for two- and four-year colleges.

*Assessment, Evaluation, and Research, Social Justice and Inclusion*

*Mid-Level Managers, Senior Student Affairs Officers*

*Research Lecture*

## WEDNESDAY, NOVEMBER 16 - 8:45AM - 9:45AM

### TRADITIONAL EDUCATION SESSION

**Be Strategic: Shape Your Student Affairs Career!**

***Endorsed by the New Professionals & Graduate Students Knowledge Community***

***Emerald Ballroom I***

Sonja Ardoin, Program Director & Clinical Assistant Professor, Boston University

Support and guidance abound during a first job search process in student affairs. But, what happens after the first job? How does one effectively shape their career path? Join the author of *The Strategic Guide to Shaping Your Student Affairs Career* to explore the five key strategies and how to implement them in a way that works for you!

*Personal and Ethical Foundations, Organizational and Human Resources*

*Graduate Students, New/Entry-Level Professionals*

*Workshop*

## WEDNESDAY, NOVEMBER 16 - 8:45AM - 9:45AM

### TRADITIONAL EDUCATION SESSION

**Student Affairs' Co-Curricular Learning with Student Learning Outcomes**

***Emerald Ballroom II***

Thomas Kresch, Assistant Vice President of Student Affairs, Bloomsburg University of Pennsylvania

Molly Marnella, Associate Professor of Teaching and Learning, Bloomsburg University of Pennsylvania

Michael McFarland, Director of Athletics, Bloomsburg University of Pennsylvania

George Kenzel, Director of the Center for Leadership and Engagement, Bloomsburg University of Pennsylvania

Participants will hear from a Student Affairs Division that has recently added co-curricular learning experiences, which are aligned with student learning outcomes. These learning experiences are now recognized in their University's General Education curriculum. Hear about the process of how Student Affairs and Academic Affairs have worked together to add General Education assessment to a few Student Affairs programs.

*Assessment, Evaluation, and Research, Student Learning and Development*

*Mid-Level Managers, Senior Student Affairs Officers*

*Panel*

# EDUCATIONAL SESSIONS

## WEDNESDAY, NOVEMBER 16 - 8:45AM - 9:45AM

### TRADITIONAL EDUCATION SESSION

**2016 Public Policy Division Update: Elections, Legislation and Recent Developments at the Federal and State Level**

***Amphitheatre***

Seann S. Kalagher, Associate Dean of Student Affairs/Deputy Title IX Coordinator for Students, Quinnipiac University

The NASPA Public Policy Division provides updates and resources for members on federal and state policy, legislation and legal issues. This session will review recent developments from the 2016 elections at the federal and state levels, discuss developments in Department of Education and other federal departments, and discuss the agenda for the new Congress that will be seated in January. Also, the session will review state issues within Region I, including ballot initiatives, legal cases, and state legislative developments.

*Mid-Level Managers, Senior Student Affairs Officers  
Workshop*

## WEDNESDAY, NOVEMBER 16 - 10:00AM - 10:25AM

### MINI SESSION

**Developing A Purpose: One Department's Story**

***Valcour***

Matt Petersons, Associate Director of Residence Life, Southern New Hampshire University  
Elaina Hill, Residence Director, Southern New Hampshire University

As a department going through tremendous turnover and change, we recognized a stagnation of energy and commitment to the office and students we serve. We saw an opportunity for a collaborative approach within the Office of Residence Life to update and reinvigorate our mission, vision, values, and learning outcomes. We then took this approach to teach other members within the Division of Student Affairs how they could do the same for their departments.

*Values, Philosophy, and History, Assessment, Evaluation, and Research, Student Learning and Development  
New/Entry-Level Professionals, Mid-Level Managers  
Workshop*

## WEDNESDAY, NOVEMBER 16 - 10:00AM - 11:00AM

### SELECT EDUCATION SESSION

**Supervision and Feedback: How Supervisory Feedback and Rewards Impact Staff's Professional Development and Morale**

***Willsboro***

Bridget Dailey, Area Coordinator, Saint Anselm College

This session will discuss different strategies that help new professionals support staff development. We will explore the benefits and pitfalls of rewards based supervision and feedback. We will establish long-lasting solutions and methods for supporting staff members as well as helping them maintain a high level of performance.

*Leadership, Advising and Supporting  
Graduate Students, New/Entry-Level Professionals  
Roundtable*

## WEDNESDAY, NOVEMBER 16 - 10:00AM - 11:00AM

### TRADITIONAL EDUCATION SESSION

**Peeling the Onion: Micro Skills of a Student Conduct Officer**

***Kingsland***

Cory Davis, Coordinator of Student Conduct, Keene State College  
Nicole Cartier, Residence Director, Plymouth State University

Are you looking to become a conduct officer or have you found your role as a conduct officer challenging? Are you seeking more skills to utilize in your conduct meetings? In this session, participants will explore and practice foundational micro skills needed to become an effective, developmental, and ethically sound conduct officer.

*Student Learning and Development, Advising and Supporting  
Graduate Students, New/Entry-Level Professionals  
Workshop*

# EDUCATIONAL SESSIONS

## WEDNESDAY, NOVEMBER 16 - 10:00AM - 11:00AM

### TRADITIONAL EDUCATION SESSION

**Women in Student Affairs: Climbing the Leadership Ladder (Without Falling All the Way Down!)**

***Emerald Ballroom II***

Danielle O'Connell, Director of Campus Activities & Student Leadership, Becker College  
Jill Bassett, Assistant Dean of Student Affairs, Franklin Pierce University  
Shawna Altenburger, Associate Director of Residence Life for Administration, Boston University

Join us for candid conversation, strategies and resources as we discuss our experiences as women leaders in the field of Student Affairs balancing a variety of professional and personal responsibilities (including but not limited to family/friends/dating/marriage/ children/personal health/networking and career advancement). This presentation will “get real” as we dive into how we have advanced our careers, focused on personal development, overcome challenges and obstacles, and found balance within our personal lives. We'll offer strategies and tips for participants, and ask you to reflect on your own career path, goals, and the many items that you have “on your plate”. How do you advance your career? Balance and prioritize the many responsibilities in your life? Make time for yourself to achieve optimal health and wellness? And successfully navigate the leadership ladder without falling “all the way down”??? Let's explore and discuss together. #climbingtheleadershipladder

*Personal and Ethical Foundations, Leadership*

*New/Entry-Level Professionals, Mid-Level Managers*

*Show & Tell*

## WEDNESDAY, NOVEMBER 16 - 10:00AM - 11:00AM

### TRADITIONAL EDUCATION SESSION

**International Students: Motivations, Perceptions, and Cultural Challenges**

***Emerald Ballroom I***

Erin Wisniewski, Director of Student Programming and Leadership, Regis College  
Justin Parsons, International Admission Counselor, Regis College

As higher education becomes more globalized and the international student population grows, faculty, staff, and administrators need to be prepared to serve these unique students. As a small institution the Regis Student Affairs division has worked deliberately to educate the campus community on cultural differences. This presentation will discuss how to programmatically address the diverse needs of our student populations.

*Personal and Ethical Foundations*

*Mid-Level Managers, Faculty Members*

*Workshop*

## WEDNESDAY, NOVEMBER 16 - 10:00AM - 11:00AM

### TRADITIONAL EDUCATION SESSION

**Professional Building Blocks: Promoting Competence in Technology**  
***Shelburne***

Max Quinn, Coordinator of Living-Learning Communities, University of Massachusetts Lowell  
Kelly Brochu, Assistant Director of Residence Life, Regis College

All professionals must develop competence in their work and their ability to make a lasting impact on the students that they serve. Endorsed by the Technology Knowledge Community, this session will empower professionals to explore the Technology Competency and build upon pre-existing skills within the areas of Social Media, Digital Identity, Digital Literacy and Digital Citizenship. #TECHBuildingBlocks

*Technology*

*Graduate Students, New/Entry-Level Professionals*

*Workshop*

## WEDNESDAY, NOVEMBER 16 - 10:00AM - 11:00AM

### TRADITIONAL EDUCATION SESSION

**Why Talk if No One is Listening? Engagement Strategies for Leadership Development**

***Diamond Ballroom I***

Nancy Hunter Denney, Executive Director, Lead365 National Conference

Connecting to students accustomed to "living online" might not be easy, but it's crucial to their development as leaders and productive contributors to society. GenZers crave face-to-face interactions and personal connections. Learn from a professional "engager" a host of methods, phrases, tricks and techniques for reaching students from coaching to enhanced facilitation and presentation skills.

*Leadership, Student Learning and Development*

*New/Entry-Level Professionals, Mid-Level Managers*

*Workshop*

# EDUCATIONAL SESSIONS

## WEDNESDAY, NOVEMBER 16 - 10:00AM - 11:00AM

### TRADITIONAL EDUCATION SESSION

#### **The Influence of Identity on Student Affairs Professionals**

##### ***Emerald Ballroom III***

Peter Fowler, Associate Dean of Students, Wentworth Institute of Technology  
Barbara LoMonaco, Vice President for Student Affairs, Salve Regina University

As advocates, administrators, supervisors, and educators we must possess the self-knowledge and confidence to preserve our own cultural identities within changing, complicated contexts. How do our identities influence our work as student affairs educators? A panel of professionals of varying identities and experiences will share their perspectives of how identity may influence our work.

*Personal and Ethical Foundations, Social Justice and Inclusion  
New/Entry-Level Professionals, Mid-Level Managers  
Panel*

## WEDNESDAY, NOVEMBER 16 - 10:00AM - 11:00AM

### TRADITIONAL EDUCATION SESSION

#### **Positioning Yourself for the Practitioner to Professor Pipeline**

##### ***Diamond Ballroom II***

Sonja Ardoin, Program Director & Clinical Assistant Professor, Boston University  
Rozana Carducci, Assistant Professor & Program Coordinator, Salem State University  
Susan Marine, Program Director & Assistant Professor, Merrimack College

Are you an administrator who is pursuing or has earned a doctorate? Are you interested in teaching part-time or transitioning to a full-time faculty role in a higher education or student affairs program? Join a panel of Region I faculty members to discuss the various paths from practitioner to professor and how to position yourself for success.

*Personal and Ethical Foundations, Organizational and Human Resources  
Mid-Level Managers, Senior Student Affairs Officers  
Panel*

## WEDNESDAY, NOVEMBER 16 - 10:00AM - 11:00AM

### TRADITIONAL EDUCATION SESSION

#### **2016 Public Policy Division Update: Elections, Legislation and Recent Developments at the Federal and State Level**

##### ***Amphitheatre***

Seann S. Kalagher, Associate Dean of Student Affairs/Deputy Title IX Coordinator for Students, Quinnipiac University

The NASPA Public Policy Division provides updates and resources for members on federal and state policy, legislation and legal issues. This session will review recent developments from the 2016 elections at the federal and state levels, discuss developments in Department of Education and other federal departments, and discuss the agenda for the new Congress that will be seated in January. Also, the session will review state issues within Region I, including ballot initiatives, legal cases, and state legislative developments.

*Mid-Level Managers, Senior Student Affairs Officers  
Workshop*

## THANK YOU TO OUR SPONSORS



Our Best Event is Yours

**automatic** laundry  
superior service solutions

**campuslabs**<sup>®</sup>  
Data Driven Innovation

A green icon consisting of a central circle with a checkmark inside, connected to four smaller circles at the top, bottom, left, and right, forming a network or molecular structure.

MERRIMACK  
COLLEGE



# THANK YOU TO OUR SPONSORS



LOWELL ROOM FURNITURE



UNIVERSITY LOUNGE FURNITURE

LIVING LEARNING COLLABORATING

## ROOM FURNITURE SEATING CHAIRS TABLES

800-228-6638 | MODUFORM.COM | ADDENFURNITURE.COM



CHELSEA MODULAR SEATING



DALTON MODULAR BENCHES & OTTOMANS



## THANK YOU TO OUR SPONSORS



*The Experts in Student Conduct Software*



# THANK YOU TO OUR SPONSORS

