

naspaapc

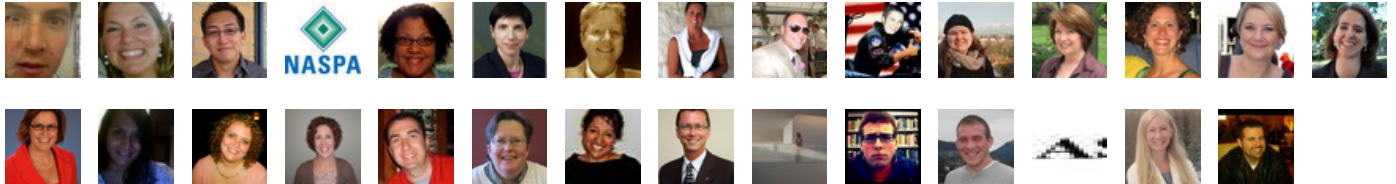
#NASPAapc

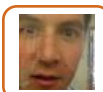
2011 NASPA Assessment & Persistence Conference

Trending Words

#naspaapc, rt, &, #saass, assessment, students, learning, new, @naspatweets:, more, conf, student, plenary, 4, want

Event Participants





Checked in! Ready for #NASPAapc

09-Jun-11 15:15 | mateoism



#NASPAapc ready to tweet from Pre-con 3 assessing intentional co-curricular learning

09-Jun-11 16:00 | Justjess109



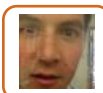
Presenter just acknowledged and encored tweeting! #NASPAapc

09-Jun-11 16:22 | Justjess109



Do you have unique ways to "prime" students so they can more accurately reflect identity devo in the moment? #NASPAapc

09-Jun-11 16:28 | Justjess109



Learning some great stuff about program fidelity at #NASPAapc! I can't wait to take this back to UNM!

09-Jun-11 18:19 | mateoism



opening plenary #naspaAPC

09-Jun-11 20:05 | carlosl824



#NASPA Exec Dir Gwen Dungy opens #NASPAapc Assessment Conf with look at where we've been, where we are, and where we're going in #saass

09-Jun-11 20:10 | NASPAtweets



David Paris, Exec Dir of New Alliance for Stdnt Learning & Acctblty, offers #NASPAapc keynote on assessment as path 2 professionalism #saass

09-Jun-11 20:20 | NASPAtweets



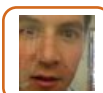
RT @NASPAtweets: #NASPA Exec Dir Gwen Dungy opens #NASPAapc Assessment Conf with look at where we've been, where we are, and where we're going in #saass

09-Jun-11 20:44 | BecomingAMW



RT @NASPAtweets: #NASPA Exec Dir Gwen Dungy opens #NASPAapc Assessment Conf with look at where we've been, where we are, and where we're going in #saass

09-Jun-11 20:46 | EABSALC



Quickly realizing that our NSO evaluations are inadequate in terms of assessment. Satisfaction/recommendation rates= meaningless. #NASPAapc

09-Jun-11 22:00 | mateoism



RT @NASPAtweets: David Paris, Exec Dir of New Alliance for Stdnt Learning & Acctblty, offers #NASPAapc keynote on assessment as path 2 professionalism #saass

09-Jun-11 22:19 | lesliedareNCSU



RT @Justjess109: Do you have unique ways to "prime" students so they can more accurately reflect ID dev in the moment? #NASPAapc #saass

09-Jun-11 22:45 | NASPAtweets



RT @Phdz31: Can we imagine publishing our assessmt results in our newspapers like in Australia? Talk about accountability! #NaspaAPC #saass

09-Jun-11 22:54 | NASPAtweets



RT @cholbrook357: Why articulate intentional learning outcomes? Help students make informed decisions for their growth #naspaAPC #saass

09-Jun-11 22:58 | NASPAtweets



#NASPAapc evening plenary about to begin - don't miss SSAO panel on leading #saass & persistence efforts on campus

09-Jun-11 23:45 | NASPAtweets



Sounds like a gr8 1st day! RT @JoeBooksLevy: #naspaapc is amazing!..evening reception poolside- Jill 4 @svassessment! <http://yfrog.com/73xtj>

10-Jun-11 04:44 | NASPAtweets



RT @Phdz31: what other incentives cld b given to grow saassmt cult? #saass #NASPAapc

10-Jun-11 04:45 | NASPAtweets



RT @Phdz31: Funniest stmt @ #NASPAapc 2day "we give staff scratch off tickets 2motivate ppl 2 do assessments...bc we dont have \$" :-) #saass

10-Jun-11 04:49 | NASPAtweets



RT @NASPAtweets: RT @Phdz31: Funniest stmt @ #NASPAapc 2day "we give staff scratch off tickets 2motivate ppl 2 do assessments...bc we dont have \$" :-) #saass

10-Jun-11 04:53 | margaretgarry



So glad! RT @cholbrook357: Poster session was a lot of fun-talked w/so many! Poolside reception was beautiful! #naspaapc

10-Jun-11 09:12 | NASPAtweets



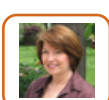
Good morning #NASPAapc ...be sure to grab some bfast and join a roundtable before this morning's plenary with Arthur Levine & Diane Dean!

10-Jun-11 14:00 | NASPAtweets



1st session of the day #NASPAapc -Arthur Levine&Diane Dean -Portrait of Digital Generation

10-Jun-11 15:33 | cholbrook357



Will be presenting brand new data on our students #NASPAapc #sachat

10-Jun-11 15:35 | cholbrook357



@carlosl824 maybe we can connect at lunch or after session this evening! #NASPAapc

10-Jun-11 15:38 | cholbrook357



18-22 yr old residents are only 17% of college population #NASPAapc (Levine)

10-Jun-11 15:43 | cholbrook357



2days students say they want convenience & service: quality instruction & low cost #NASPAapc

10-Jun-11 15:44 | cholbrook357



Art Levine & Diane Dean reporting on results of natl study of today's undergrads & impact of 1st gen of digital natives on #saass #NASPAapc

10-Jun-11 15:46 | NASPAtweets



BSU will need to consider some real changes if we want to serve today's non-trads #NASPAapc #BSULIFE

10-Jun-11 15:47 | cholbrook357



Today's digital stdts-steady stream of info affects them more than singular events- way we communicate is more imp than message #NASPAapc

10-Jun-11 15:50 | cholbrook357



Even w/social networks 32% are socially isolated & 31% feel lonely #NASPAapc

10-Jun-11 16:06 | cholbrook357



Hhm...to synthesize all THIS info- some real contradictions & challenges that will require some rethinking on our part #NASPAapc

10-Jun-11 16:09 | cholbrook357



One major take away- MUST find ways to teach our stdts to balance digital use with real communication #NASPAapc

10-Jun-11 16:11 | cholbrook357



RT @cholbrook357: 18-22 yr old residents are only 17% of college population #NASPAapc (Levine)

10-Jun-11 16:13 | MichelleRodems



Levine: how do our colleges match needs/reality of our stdts? Not well. We are provider driven they are consumer driven #NASPAapc

10-Jun-11 16:18 | cholbrook357



We are location & time bound; stdts are not. We are passive & abstract; they are active & concrete learners #NASPAapc

10-Jun-11 16:19 | cholbrook357



They are about learning & outcome; we are about teaching & process. They r about collaboration & don't get what we see as cheating #NASPAapc

10-Jun-11 16:22 | cholbrook357



Levine: many gaps exist between how we teach & students learn but also between what stdts know/can do & what s exp of educ ppl #NASPAapc

10-Jun-11 16:25 | cholbrook357



Imps 4 SA role in educating faculty, design of orientattion, need 4 education ethics, intimate relationships, digital decorum #NASPAapc

10-Jun-11 16:28 | cholbrook357



Need to teach students general ed or the world they DO live in, not the one they WANT to live in! Levine #NASPAapc

10-Jun-11 16:30 | cholbrook357



Levine: student affairs must be more assertive in getting info about our students to faculty, presidents, cabinets #NASPAapc

10-Jun-11 16:34 | cholbrook357



RT @cholbrook357: Levine: student affairs must be more assertive in getting info about our students to faculty, presidents, cabinets #NASPAapc

10-Jun-11 16:41 | amberagd



RT @cholbrook357: Levine: student affairs must be more assertive in getting info about our students to faculty, presidents, cabinets #NASPAapc

10-Jun-11 17:03 | cindykane



RT @timkresse: Higher education has had growth by addition rather than substitution. Levine #NASPA #NASPAapc

10-Jun-11 19:17 | NASPAtweets



RT @timkresse: #highered has had growth by addition rather than substitution. Levine #NASPA #NASPAapc

10-Jun-11 19:18 | NASPAtweets



RT @NASPAtweets: #NASPAapc pm plenary w @OhioState'vp for student life Javaune Adams-Gaston talking how ALL areas of univ "own" stdnt lrng & success #saass

10-Jun-11 21:29 | TaraMilliken



This session: Jamie Hoffman- perceptions of assessment among new professionals in stu affairs #NASPAapc

10-Jun-11 21:36 | amberagd



Existing lit suggests: new prof know #saass is impt but don't practice it in their work #NASPAapc

10-Jun-11 21:40 | amberagd



New professional is defined for this study as 1-5 years in the field. #NASPAapc

10-Jun-11 21:44 | amberagd



arghh....earlier I was tweeting with #naspaAPC11 instead of #NASPAapc

10-Jun-11 21:45 | amberagd



Next up- what delivery methods do new professionals percieve to be most helpful to learn assessment skills #NASPAapc

10-Jun-11 21:53 | amberagd



Helpful- shadowing another professional, visiting another institution, attending assessment conf, assistantship #NASPAapc

10-Jun-11 21:54 | amberagd



Least helpful- teleconferences, training videos, regional conf workshops, workshops at own campus, online methods #NASPAapc

10-Jun-11 21:55 | amberagd



Most Helpful in Grad Program- a course specific on assessment, then a thesis. Research class was not helpful. #NASPAapc

10-Jun-11 21:56 | amberagd



What did new prof say they would use in the future- learning individually on own or in full time position, conference #NASPAapc

10-Jun-11 21:57 | amberagd



Least likely to use- online methods, teleconferences, site visits #NASPAapc

10-Jun-11 21:58 | amberagd



Agree!"@amberagd: Most Helpful in Grad Program- a course specific on assessment, then a thesis. Research class was not helpful. #NASPAapc"

10-Jun-11 21:59 | monicamochman



saying 'yup' to most everything coming through @amberagd's feed with the #NASPAapc tag

10-Jun-11 22:03 | mikesevery



recs from study 4 grad programs- 1) make course required 2) connect research/assess 3) require thesis 4) require assess proj #NASPAapc

10-Jun-11 22:04 | amberagd



Recs for Prof Associations- collaborate on certification program that incorporates assessment skills #NASPAapc

10-Jun-11 22:11 | amberagd



Rec 4 SA Division Leadership- champion assess, creative financial support, hold on-campus wkshps, assist national certification #NASPAapc

10-Jun-11 22:15 | amberagd



Prof Association- on conf program proposals, require evidence of practice effectiveness as part of proposal #NASPAapc

10-Jun-11 22:24 | amberagd



#sachat how do you role model student learning assessment for upcoming grads and new professionals? #NASPAapc

10-Jun-11 22:28 | amberagd



Couldn't agree more! RT @UOAdvDir: Loving @amberagd tweets from #NASPAapc. Thank goodness for Twitter so we can keep in touch!

10-Jun-11 22:29 | maryjogonzales



RT @amberagd: Next up- what delivery methods do new professionals percieve to be most helpful to learn assessment skills #NASPAapc

11-Jun-11 00:15 | JuddHarbin



RT @amberagd: Helpful- shadowing another professional, visiting another institution, attending assessment conf, assistantship #NASPAapc

11-Jun-11 00:15 | JuddHarbin



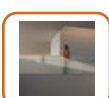
RT @amberagd: Least helpful- teleconferences, training videos, regional conf workshops, workshops at own campus, online methods #NASPAapc

11-Jun-11 00:16 | JuddHarbin



RT @amberagd: Most Helpful in Grad Program- a course specific on assessment, then a thesis. Research class was not helpful. #NASPAapc

11-Jun-11 00:16 | JuddHarbin



Cal State Fullerton & Student Voice. What great teamwork! #saass #NASPAapc

11-Jun-11 00:16 | kayeholman



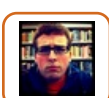
RT @amberagd: recs from study 4 grad programs- 1) make course required 2) connect research/assess 3) require thesis 4) require assess proj #NASPAapc

11-Jun-11 00:17 | JuddHarbin



#naspaapc stu felt acceptance of diversity was a prevalent issue in our society. @UMDMICA #reaffirmourneedforourwork

11-Jun-11 00:47 | Phdz31



RT @amberagd: Most Helpful in Grad Program- a course specific on assessment, then a thesis. Research class was not helpful. #NASPAapc

11-Jun-11 00:52 | KiddTW



Successful #naspaapc @svassessment presentation with CSUF about their amazing culture of co-curricular assessment! Time for dinner!

11-Jun-11 02:00 | JoeBooksLevy



+1RT @maryjogonzales: Couldn't agree more! RT @UOAdvDir: Loving @amberagd tweets from #NASPAapc. Thk goodness for Twitter!

11-Jun-11 02:04 | tbump



Fun to see some ASHE members at #NASPAapc today! Welcome to #LasVegas, home of @ASHEoffice! Isn't @Cosmopolitan_LV great?!

11-Jun-11 03:55 | ASHEoffice



#naspapc John PryorCIRP data says peer enviro influence retention of stu. If peers dont want to transfer; that other stu wont want 2leave2

11-Jun-11 16:21 | Phdz31



Getting frustrated by most existing evaluation methods currently used in #studentaffairs! Major change is needed! #NASPAapc

11-Jun-11 17:29 | mateoism



Safe travels home to all our #NASPAapc 'ers...hope you had a great conf exp & are taking some invaluable learning & insights back to campus!

11-Jun-11 19:07 | NASPATweets



LisaErwin (Bemidji) & RudyJackson (Vanderbilt) had great sessions, thanks for @svassessment love! Amazing #naspapc, safe travels folks!

11-Jun-11 19:30 | JoeBooksLevy



#NASPAapc presentation archive available at <http://goo.gl/VsOCh> (members...non-memb conf reg receive email with instructions to access)

12-Jun-11 20:28 | NASPATweets



RT @NASPATweets: #NASPAapc presentation archive available at <http://goo.gl/VsOCh> (members...non-memb conf reg receive email with instructions to access)

12-Jun-11 21:21 | clconzen



@carlosl824 Carlos, I am sorry I never ran into you at #NASPAapc ! Congrats to your cousin - high school or college?

13-Jun-11 00:15 | cholbrook357

naspaapc11

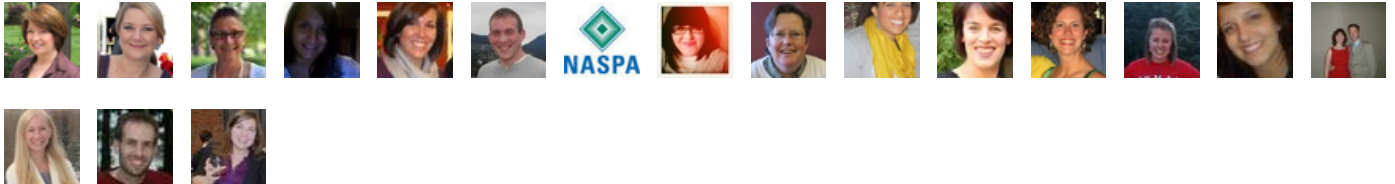
#NASPAapc11

2011 NASPA Assessment & Persistence Conference

Trending Words

#naspaapc11, stu, r, learning, stus, more, info, rt, w/, ur, @amberagd:, @naspatweets, want, way, session

Event Participants





Pre-conference session starting- assessing intentional co-curricular learning w/Rudy Jackson #naspaapc11

09-Jun-11 16:06 | cholbrook357



Inaugural mtg of SA Assessment Leaders! #naspaAPC11 (@ The Cosmopolitan of Las Vegas w/ 4 others)
<http://4sq.com/lb20DU>

09-Jun-11 16:09 | amberagd



@amberagd Our assessment AVP is there - Ellen Meents-DeCaigny. She is a non-tweeter...like Katie. Maybe you can convince her! #naspaAPC11

09-Jun-11 16:10 | DSchmidtRogers



Great idea to train pp on assmt bt creatin a project n ongoing support #naspaAPC11

09-Jun-11 16:39 | Phdz31



Challenge is knowing how much the program contributed to the outcome- need to think of programatic learning & relationships #naspaapc11

09-Jun-11 17:06 | cholbrook357



If assmt job pos. were up in d chain wld be easier ro know supervisor pref n limitations. Makes sense why this is challenge 4me #naspaAPC11

09-Jun-11 17:16 | Phdz31



Between #novak11 and #naspaapc11 I'm not sure what to follow right now! #twitteroverload

09-Jun-11 17:26 | awcarlson



Brief pause in LAS - loving the free wifi! Can't wait to get to the Cosmo for #naspaAPC11! Look out, Vegas - @svassessment's in town!

09-Jun-11 17:36 | JoeBooksLevy



Why articulate intentional learning outcomes? Help students make informed decisions for their growth #naspaAPC11

09-Jun-11 17:36 | cholbrook357



@KMcCarthy8185 system was funny this am- no I got to go to #naspaapc11 b/c of funding from BSC from a persistence grant. Got lucky!

09-Jun-11 19:05 | cholbrook357



@KMcCarthy8185 His/her name? Love to connect! #naspaapc11

09-Jun-11 19:10 | cholbrook357



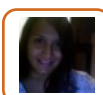
Enjoying lunch b4 the opening session w/ SA Assessment Leaders including @gavinhenning #naspaAPC11

09-Jun-11 19:37 | amberagd



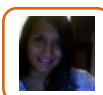
Next up: tweeting from David Paris session on #saassess. He is from new leadership alliance for stu learning and accountability #naspaAPC11

09-Jun-11 20:27 | amberagd



@NASPATweets #naspaAPC11 We need 2assess bc gov is seekin q's when college debt is growin higher than creditcarf debt...yes!

09-Jun-11 20:40 | Phdz31



Can we imagine publishin our assessmt results inour newspapers like in Australia? Talk bout accountability #NaspaAPC11 @NASPATweets

09-Jun-11 20:53 | Phdz31



Day 2 #naspaAPC11! (@ The Cosmopolitan of Las Vegas) <http://4sq.com/kEmIPQ>

10-Jun-11 14:12 | amberagd



Hope to see @cholbrook357 and @carlosl824 today! #naspaAPC11

10-Jun-11 14:14 | amberagd



Me too!RT @amberagd Hope to see @ambergd and @carlosl824 tme today! #naspaAPC11

10-Jun-11 14:38 | cholbrook357



Is ur campus #saassess dir a part? :: Student Affairs Assessment Leaders <http://bit.ly/kT4Bz1> #sachat #naspaAPC11

10-Jun-11 15:07 | amberagd



@amberagd Great! Love to hear about #naspaAPC11! Let's change our corner of the world when you return! #WLSalt

10-Jun-11 15:14 | UOAdvDir



Arthur Levine and Diane Dean morning plenary! #naspaAPC11

10-Jun-11 15:36 | amberagd



2 populations emerged- non-traditional stus, but they r the majority. Only 17% of stus r 18-22 #naspaAPC11

10-Jun-11 15:42 | amberagd



What kind of relationship do stus want from their college- they said like their bank, gas company, etc #naspaAPC11

10-Jun-11 15:43 | amberagd



Stus want service and convenience. They want quality instruction and engagement. Low cost. They will shop around. #naspaAPC11

10-Jun-11 15:44 | amberagd



We r competing w/ Kaplan, Phoenix, etc. They have fast and convenient service, contact w/ faculty. The digitally native student. #naspaAPC11

10-Jun-11 15:47 | amberagd



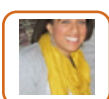
Today stu r effected way more by the way we communicate and share info than by the news or info itself #naspaAPC11

10-Jun-11 15:49 | amberagd



Deans observations- effects of 9/11, none. They returned to normal and wore off quickly #naspaAPC11

10-Jun-11 15:50 | amberagd



Great info "@amberagd: Today stu r effected way more by the way we communicate and share info than by the news or info itself #naspaAPC11"

10-Jun-11 15:51 | MRobinson_FSU



Read this- stu react to 9/11 and impact #naspaAPC11 <http://twitpic.com/59lo1r>

10-Jun-11 15:52 | amberagd



To stu- major events affecting their lives: launch of world wide web, gas price, mass use of cell phone, election of Obama, 9/11 #naspaAPC11

10-Jun-11 15:54 | amberagd



83% reported interest in global issues but could not demonstrate knowledge to match interest #naspaAPC11

10-Jun-11 16:00 | amberagd



Increases access to info but not critically thinking about it. #naspaAPC11

10-Jun-11 16:01 | amberagd



Today's students are interconnected and intimate, yet isolated. Social networking is daily important #naspaAPC11

10-Jun-11 16:03 | amberagd



Friends- Majority feel sense of community on campus. Have friends of different race and religion. #naspaAPC11

10-Jun-11 16:04 | amberagd



However, more likely to socialize with students of own race and religion. 1/3 say often feel lonely. #naspaAPC11

10-Jun-11 16:05 | amberagd



Students hang out more with laptops open- parallel play in virtual world but not with each other #naspaAPC11

10-Jun-11 16:07 | amberagd



One Dean stated- students lack communication and human interaction skills resulting in lack of civility on campus. #naspaAPC11

10-Jun-11 16:09 | amberagd



@amberagd was this a specific survey? #naspaapc11

10-Jun-11 16:10 | NikiRudolph



Students are perpetually parented. Calling daily. Talk re: advice for friend, major, course, co-decision making is common #naspaAPC11

10-Jun-11 16:11 | amberagd



Heard about Mom as a social coach for the entire floor of a residence hall. They group called her to get info. #naspaAPC11

10-Jun-11 16:12 | amberagd



RT @amberagd: Students want service and convenience. They want quality instruction and engagement. Low cost. They will shop around. #naspaAPC11

10-Jun-11 16:13 | MichelleRodems



For the most part, parental involvement is positive. Students get more support and importance to retention #naspaAPC11

10-Jun-11 16:14 | amberagd



Can also be very negative. Over involvement leads to delayed development. Sometimes protecting student from parent #naspaAPC11

10-Jun-11 16:15 | amberagd



RT @amberagd Students are perpetually parented. Calling daily. Talk re: advice for friend, major, course, co-decision making is common #naspaAPC11

10-Jun-11 16:16 | cholbrook357



More and more creation of parent programs. Let's celebrate collective culture and harness parental involvement. #naspaAPC11

10-Jun-11 16:16 | amberagd



College: individual, depth of knowledge, ivory tower. #naspaAPC11

10-Jun-11 16:21 | amberagd



Stu: group workers and collaborators, breadth of knowledge , collective community #naspaAPC11

10-Jun-11 16:22 | amberagd



Gap btwn how stus learn and how colleges teach #naspaAPC11

10-Jun-11 16:23 | amberagd



Gap btwn what stus know and what is expected of an educated person #naspaAPC11

10-Jun-11 16:24 | amberagd



Gap btwn stu technology use by race, age, income, and geography #naspaAPC11

10-Jun-11 16:24 | amberagd



Implications for stu affairs- active instruction. Experiential learning. No more passive programming.
#naspaAPC11

10-Jun-11 16:28 | amberagd



Colleges have to keep one foot in the library and one in the street #naspaAPC11

10-Jun-11 16:29 | amberagd



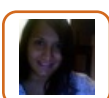
Again, the info just tweeted from new data collected ny Arthur Levine and Diane Dean. New book will be out in follow up #naspaAPC11

10-Jun-11 16:31 | amberagd



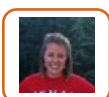
If you've read When Hope and Fear Collide this will be the next iteration. #naspaAPC11

10-Jun-11 16:32 | amberagd



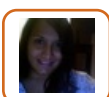
Great disc on college stu digital gen-while stu collective still competative @NASPATweets #naspaAPC11

10-Jun-11 16:34 | Phdz31



RT @amberagd: Today stu r effected way more by the way we communicate and share info than by the news or info itself #naspaAPC11

10-Jun-11 16:35 | AshlieBaty



Wonder how ldrshp dev wld b impacted by such digital college stu gen @NASPATweets #naspaAPC11

10-Jun-11 16:36 | Phdz31



Levine: We have #highered that grows by addition rather than substitution. Eliminate duplication. Create new.
#naspaAPC11

10-Jun-11 16:44 | amberagd



Create an understanding of the diff btwn research and assessment. #naspaAPC11

10-Jun-11 17:19 | amberagd



Assessment is of the practice. How is the practice of the theory working on ur campus? In ur program?
#naspaAPC11

10-Jun-11 17:19 | amberagd



We r taking an isolated point of view, disconnected from the constituent and focused on our ego. #naspaAPC11

10-Jun-11 17:27 | amberagd



We must collaborate to create and sustain opportunities for stu learning #naspaAPC11

10-Jun-11 17:28 | amberagd



Who r the constituents for learning in ur program? #naspaAPC11

10-Jun-11 17:31 | amberagd



Our small group- our time is focused on teaching our colleagues/fighting for resources. Not on students. What does this mean? #naspaAPC11

10-Jun-11 17:34 | amberagd



<http://t.co/oBFiedG> great examples of snapshots #saass results @NASPAtweets #naspaAPC11

10-Jun-11 17:43 | Phdz31



How do u influence stu learning? Colleagues? Parents? Students? #naspaAPC11

10-Jun-11 17:47 | amberagd



How do ur constituents help u form outcomes, design learning act, and evaluate learning? #naspaAPC11

10-Jun-11 17:54 | amberagd



Focus on assessing your themes rather than each outcome each year #naspaAPC11

10-Jun-11 17:55 | amberagd



To collaborate on stu learning have to check ur ego at the door. Involve constituents at every step #naspaAPC11

10-Jun-11 17:56 | amberagd



Closing the loop doesn't mean lengthy reports. Summarize what u learning and action for next year. #naspaAPC11

10-Jun-11 18:02 | amberagd



We do have to offer prof devo on collaborations, apply theory to work, assess, interpret and make use of data #naspaAPC11

10-Jun-11 18:08 | amberagd



Add reflection activity to every prof devo so people can practice reflection #naspaAPC11

10-Jun-11 18:09 | amberagd



How do u place impt on collaboration and reflective practice in hiring and staff evaluations? #naspaAPC11

10-Jun-11 18:10 | amberagd



RT @amberagd: We must collaborate to create and sustain opportunities for stu learning #naspaAPC11

10-Jun-11 18:11 | jtrayan



Understand how reward structures shape behavior. R ur partners rewarded for collaborative behavior? i.e. faculty r often not #naspaAPC11

10-Jun-11 18:14 | amberagd



At a #NASPAapc11 session led by @gavinhenning now!

10-Jun-11 21:57 | KimmyVegas



RT @amberagd: Closing the loop doesn't mean lengthy reports. Summarize what u learning and action for next year. #naspaAPC11

10-Jun-11 22:17 | JasonBosch



Right on. RT @amberagd Focus on assessing your themes rather than each outcome each year #naspaAPC11

12-Jun-11 16:51 | _ANNEMIEKE