

NASPA IV-WEST

NATIONAL ASSOCIATION OF STUDENT PERSONNEL ADMINISTRATORS



FALL 2004
Regional
Newsletter



Mark your
2004 Calendar!

Mid-Level Institute
October 18-21, 2004

and

Region IV-West
Annual Conference
October 21-23, 2004

Fargo, North Dakota

In This Issue . . .

Message from the Region IV-West VP
– Page 2

On-line Workshops, Resources & More
– Page 3

2004 Regional Conference in Fargo, ND
– Pages 4-5

WISA Knowledge Community Update
– Page 6

Institute on College Student Values - Call
for Programs
– Page 10

Public policy update

Sherry L. Mallory, University of Arkansas
Region IV-West Public Policy Coordinator

A few quick updates on the public policy front: at this point, it looks like the reauthorization of the Higher Education Act will not be completed this year. As noted by Becky Timmons, Director of Government Relations at the American Council on Education, “it will be difficult for the leadership of either party to develop the momentum necessary to pass any significant legislation during the rest of this session” (HENA Online Newsletter, September 2004).

Currently, both Houses of Congress are on recess for a six-week summer break. They’re scheduled to re-convene in early September, but will only be in session four weeks before adjourning to allow members to return to the campaign trail. Among the issues facing Congress when they return will be Florida Hurricane Relief, appropriations, and intelligence reform.

The Higher Education Act, due to expire this year, contains an automatic rollover clause that will keep the provisions in effect until a new Bill is passed. The reauthorization focus in the next session will continue to be on the “3 A’s” – access, affordability, and accountability.

Fair Labor Standards Act [FLSA] Regulations

On August 23, 2004, changes to the Fair Labor Standards Act went into effect. Under the revised regulations, workers earning less than \$23,660 per year – or \$455 per week – automatically qualify for overtime pay. The previous salary threshold was \$155 per week. Additionally, new tests were set forth to help

employers determine who is eligible for – and exempt from – receiving overtime pay. Jobs most likely to be impacted are those which fall into the \$23,660 - \$100,000 range. For additional

information, visit the U.S. Department of Labor’s “FairPay Overtime Initiative” website at www.dol.gov/esa/regs/compliance/whd/fairpay/main.htm.

Voter Registration

In 1998, Congress mandated that all colleges and universities participating in Federal Student Aid Programs must make a good-faith effort to distribute voter registration forms to their students. A good-faith effort is thought to be comprised of two things: (1) the institution must contact the Secretary of State in their



Continued on page 10



VICE PRESIDENT'S MESSAGE

Prakash Mathen, North Dakota State Region IV-West Vice President

I am pleased and excited to write this letter as one of my official duties as Region IV-West Vice President. When I last wrote to you, I mentioned the Board Planning meeting in Kansas City. Thirty-three board members attended a very productive planning meeting. I must tell you that we have some very capable and committed board members. Together we worked very diligently and established some strategic goals for our region to strengthen our membership and the Knowledge Communities. With the help of all of you, we will be able to accomplish these goals successfully.

I would like to share some exciting news with you about attending the **CACUSS Conference** (Canadian Association of College and University Student Services) in Winnipeg, Canada, last June. Karen Pennington, Past President of NASPA also attended this conference.

Most of you may be aware that Manitoba and Saskatchewan are the two provinces in Canada that are within our region. I cannot remember the last time they attended our regional conference. My goal was to establish a relationship with our colleagues in Canada, as well as, to invite them to our regional conference in Fargo. Dave Morphy, the CACUSS conference chair and their President, Heather Vetere, welcomed me with open arms and provided me an opportunity to speak at their business meeting. I am hopeful that this is the beginning of a new relationship between our countries and the two student affairs organizations.

Similarly, another exciting thing is happening within our region in terms of our commitment to reach out to the **Tribal Colleges**. To affirm this commitment, your Board made a decision to make an offer to waive the conference fees for any Tribal College representative wishing to attend the regional conference. Laura Oster-Aaland, Deanne Sperling, and Eric Gropitch already

met with the representatives of different Tribal Colleges and extended an invitation to attend the NASPA Region IV-West Conference in Fargo. These two items are very significant in the life of our region. To paraphrase a quote from Tom Champoux, co-founder and vice president of the Effectiveness Institute, Inc., 'if we are going to maximize our potential, then collaboration is the key'. An organization like NASPA can learn to collaborate by understanding the people in organizations such as CACUSS and the Tribal Colleges. I am confident that we will be successful in this endeavor.

Finally, by the time you receive this newsletter, I am assuming that you have already made plans to attend our **Regional Conference in Fargo, North Dakota, October 21-23, 2004**. The theme of this

conference "Discovering the Legacy, Embracing the Future" lays the foundation for us to examine the history and the future of student affairs in higher education. We are very fortunate to have the leadership, attendance, and participation of Gwen Dungy, Peg Blake, Susan Komives, James Rhatigan, and Kevin Locke. I am confident that this will be an exciting conference.

Your 2004 Conference Committee, under the leadership of Ron Kopita, Vice President for Student Affairs, Wichita State University, and the **Mid-Level Institute (MLI)** planning committee, co-chaired by Kim Grassmeyer, Vice President for Student Development at the College of St. Mary, in Omaha, Nebraska, and Jill Pletcher, Director of Career Services at Wichita State University, have done an outstanding job to plan and get ready for this conference.

I am looking forward to representing you the next two years with great excitement and pride. As we say to students on our campuses, "stay involved"!



'if we are going to maximize our potential, then collaboration is the key'



Continuing education is as easy as a “click” on your computer! “NASPA online” regularly promotes upcoming conferences, workshops and e-learning courses covering a broad range of interest areas. Current E-Learning topics featured this month cover areas such as Student

Activities, Cultural Awareness, Religious Diversity, Community Service Learning, Online Orientation, Assessment, Career Advising, and Sexual Orientation Issues. Click on www.naspa.org/prodev/index.cfm to obtain more information about these **E-Learning** Courses:

October

Student Activities Online-Building an Online Community

November

Recognizing and Responding to the Realities of Race on College & University Campuses

Educating Intentional Learners: New Connections for Academic and Student Affairs

Accommodating Religious Diversity on Campus

January

Service-Learning Across the Spectrum of Student Affairs

February

Leadership for Diversity – Leading with Courage and Support

Developing an On-Line Orientation

Assessment – A Primer

April

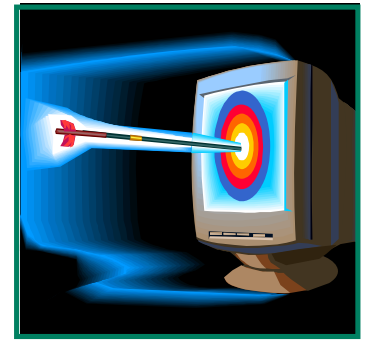
Using the Internet for Academic & Career Advising

May

Look Toto, we’re not in graduate school anymore...Using Anthropology to Understand Campus Culture and Make a Successful Transition to Job One

Ellen, Will, Grace, Punks & Matthew Shepard: Sexual Orientation Issues and Today’s College Campus

Think before you hit send



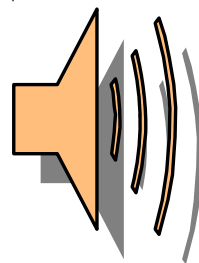
Have you ever had the thought, “Maybe I shouldn’t send this by e-mail” just before your finger depressed the send button? That voice is your intuition telling you what you probably already know – some things just aren’t appropriate for e-mail. Here are some guidelines for e-mail use that should keep you out of the virtual doghouse. If you want more information on this, check out **The Boss’s Survival Guide** by Bob Rosner, Allan Halcrow and Alan S. Levins.

- If it’s something big – don’t e-mail it. Announcements for downsizings, reorganizations, acquisitions and mergers, for instance, should never be e-mailed. If it’s something important, then you’re going to need to deal with it face to face.
- Policy changes that will generate questions should not be e-mailed. For instance, any

Continued on page 9

IMAGINE AND EXPLORE THE FUTURE

NASPA National 2005 Convention
Tampa, Florida
March 19 - March 23, 2005



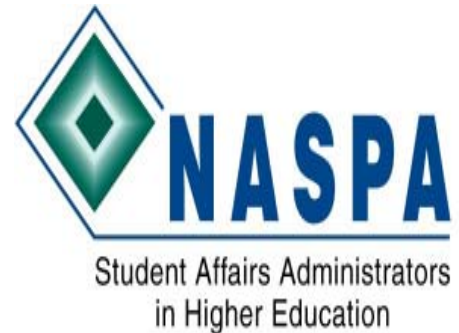
Download audio recording form and view program presentations, schedule of events, Tampa highlights, featured speakers, and registration information at:

www.naspa.org/conference/index.cfm



Discovering the legacy, Embracing the future

October 21-23, 2004
Fargo, North Dakota
Ramada Plaza Suites
& Conference Center



Thursday Keynote: James J. Rhatigan **The Frontier: History and Discovery**

James Rhatigan was the Vice President for Student Affairs and Dean of Students at Wichita State University (WSU) from 1965-1996. Dr. Rhatigan was the third vice president of NASPA Region IV-West (1970-1972). Dr. Rhatigan has held a number of positions in NASPA and was president of the association in 1975. Currently, he serves as a consultant for the WSU Foundation.

"All new knowledge comes from the edge of the intellect where ideas are born. Indeed, without personal discovery there is no future. Yet this recognition is not sufficient for one's personal or professional life. History provides context and perspective. How does one approach these vital elements in the daily practice of our work?"

Friday Keynote: Susan Komives

The Student Affairs Curriculum: Learning Reconsidered

Susan Komives is an Associate Professor teaching College Student Development at the University of Maryland. She is a former President of the American College Personnel Association, and former Vice President for Student Development at Stephens College, as well as, the University of Tampa. She is a co-editor of *Student Services* (Jossey-Bass: 1996, 2003), and co-author of *Exploring Leadership: For College Students Who Want to Make a Difference* (Jossey-Bass: 1998), and *Management and Leadership Issues For a New Century* (Jossey-Bass: 2000).



Dr. Komives will discuss future issues in student affairs work with an emphasis on the new "NASPA-ACPA Learning Reconsidered" document.

"Student Development education is key to developing student outcomes. Learning must include both content and identity/ developmental perspectives to truly influence these outcomes."



Saturday Keynote and Performance: Kevin Locke **Hoop Dancer, Story Teller, and Northern Plains Flute Player**

Kevin Locke is known throughout the world as a visionary Hoop Dancer, the pre-eminent player of the indigenous Northern Plains flute, a traditional story teller, cultural ambassador, recording artist, and educator. Kevin has performed and lectured in more than 80 countries, sharing his high vision of balance, joy, and diversity. He has served as a cultural ambassador for the United States Information Service since 1980. Deeply committed to the conservation of the earth's resources for future generations, Kevin was a delegate to the 1992 Earth Summit in Brazil, and a featured performer and speaker at the 1996 United Nations Habitat II Conference in Turkey.

"All of the people have the same impulses, spirits, and goals", reflects Kevin. "Through my music and dance, I want to create a positive awareness of this Oneness of humanity."



Discovering the legacy, Embracing the future

NASPA IV-WEST Regional Conference

Fargo, North Dakota

October 21-23, 2004

As the country commemorates and rediscovers the legendary journey that Lewis and Clark began 200 years ago, we are reminded that they were surveying future possibilities of this vast land and learning more about those who came before them.

It is with this same spirit that we will gather in North Dakota, to discover the legacy of our profession and embrace the promise of its future.

**NASPA IV-WEST REGIONAL CONFERENCE
OCT 21-23, 2004 FARGO, NORTH DAKOTA**

CONFERENCE AT A GLANCE

WEDNESDAY, OCTOBER 20

5:00 - 7:00 Conference Registration

THURSDAY, OCTOBER 21

8:00 - 5:00 Conference Registration
8:30 - 12:00 Senior Student Affairs Officers
Breakfast Meeting
9:00 - 1:45 Exhibits Open
9:00 - 11:00 Local Campus Tours
9:00 - 10:00 North Dakota Housing Officers
Meeting
10:00 - 11:00 North Dakota Strength through
Sharing Networking
11:00 - 12:30 North Dakota Alcohol and Drug
Consortium Meeting
11:00 - 12:00 Volunteer Orientation
12:30 - 1:30 MUPP Connections
12:30 - 1:30 Newcomer's Orientation
1:45 - 3:15 Welcome and Opening Keynote:
James Rhatigan
Exhibits Open
3:30 - 5:00 Program Session I
3:30 - 4:45 Conference Dinner and Awards
5:30 - 7:00 Dessert Reception and Rising Star
Awards, Hjemkomst Center
7:30 - 9:30

FRIDAY, OCTOBER 22

7:00 Fun Run/Walk
8:00 - 10:30 Conference Registration
8:00 - 8:45 Vendor Sessions
9:00 - 4:00 Exhibits Open
9:00 - 10:15 Program Sessions II
10:30 - 11:30 Keynote Speaker: Susan R. Komives
11:45 - 1:00 Conference Luncheon & Awards
1:15 - 2:30 Program Sessions III
2:45 - 4:00 Program Sessions IV
4:10 - 5:15 NASPA IV-West Business Meeting
5:15 - 6:00 Knowledge Communities
6:30 Mentor and Knowledge Community
Dinners or Dinner on your own

SATURDAY, OCTOBER 23

7:00 Water Aerobics, Ramada Pool Area
8:00 - 9:15 SSAO Coffee Roundtable
8:00 - 9:15 Program Sessions V
9:30 - 10:45 Program Sessions VI
10:50 - 12:30 Brunch and Closing Keynote:
Kevin Locke

Women in student affairs knowledge community update

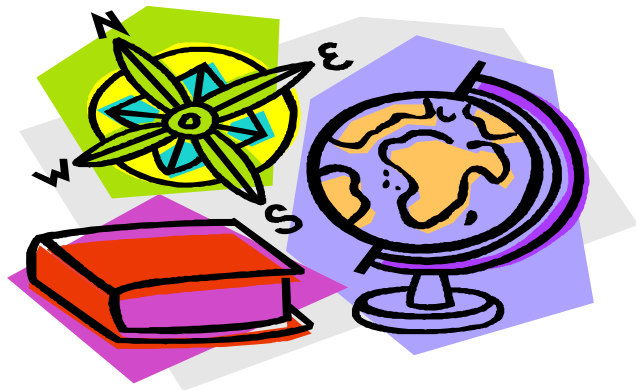
Chris Linder, Colorado State University
Knowledge Community Coordinator

The Women in Student Affairs Knowledge Community (WISA) in Region IV-West is looking for interested members! As we update our memberships on-line each year, we often forget to update our interest in various Knowledge Communities. Take a minute and go to web site www.naspa.org to update your NASPA membership profile. Indicate your interest in a Knowledge Community so that we can communicate with you!

Nationally, the WISA Knowledge Community has begun several initiatives to which we can contribute on the regional level. Two of these goals include establishing a book club and expanding the scope and purpose of our Knowledge Community as the needs of our members change.

WISA Book Club. Join us! Because a lot of us don't take the time to read as much as we would like, the National WISA KC is sponsoring a book club, and encouraging members to get involved at the regional level. Each WISA KC is going to host a special session at their regional conferences, giving WISA members, and potential members, an opportunity to get together and discuss issues related to WISA as well as the selected book.

The current WISA Book Club feature is *Closing the Leadership Gap: Why Women Can and Should Help Run the World* by Marie C. Wilson, founder of The White House Project. Wilson is



dedicated to advancing the role of women in our society; specifically, changing the political climate to get more women elected into office - including the presidency - and to change perceptions about women's leadership abilities. In the book, Wilson discusses specific ways that we can address the issues

of getting women elected/appointed to traditional leadership roles, as well as, helping women who already serve our society to be viewed as "leaders". While this book is not geared specifically for higher education professionals, strategies for advancing our own lives, as well as, to empower our female students are included. The book is an enlightening and fairly quick read. For more information, visit the web-site at: www.closingtheleadershipgap.com.

Expanding our purpose. WISA is also interested in seeking member input to improve the services provided to our members. As outlined on the NASPA webpage, the purpose of the Knowledge Community is to "focus on the specific needs of women in higher education and to help support and promote the interests and concerns of women at all levels within student affairs". As the needs of our members and campuses change, we continue to think about the purpose of our

Continued on page 8



NASPA IV-WEST CONFERENCE 2004 SPONSORS

*We extend much appreciation to
this year's Sponsors:*

PLATINUM SPONSORS

ARAMARK
CIGNA Behavioral Health
Sodexo Campus Services

SILVER SPONSOR

Southwest Contract

GOLD SPONSOR

USA Today

CONFERENCE PATRONS

Blackboard, Inc.
Hyatt Legal Plans
Premier Agendas
Rust and Associates
Student Assurance Services
Woodway

CONFERENCE SPONSOR

Global Electric Motorcars

NASPA region IV-West's colleges & universities receive national recognition

LeeAnna Lamb, *The University of Tulsa*
Region IV-West Newsletter Editor

At the beginning of every academic year, university presidents, admission recruiters, and countless enrollment and student services administrators anxiously await the publication of one of the most-referenced college rankings in the nation – the **U.S. News & World Report's** annual listing of the top colleges and universities throughout the nation. This year's August 30, 2004 cover story featured several college search and preparation articles as well as the “Exclusive 2005



Rankings - American's Best Colleges, summarized by Robert J. Morse and Samuel Flanigan (volume 137, number 6, pages 90-100).

Scanning through the lists, familiar names of institutions from the east and west coasts are routinely noted. So it is with increased pride that we come across outstanding institutions within our own region appearing alongside the others in all five of the main categories. This year, NASPA IV-West hosted nine of the institutions shown in the overall “Best National Universities” category. In the four sub-categories, our region was also represented under “Top 50 Public National Universities” (one), “Top Universities – Masters” (two), “Top Comprehensive Colleges – Bachelor's” (five), and the “Best Liberal Arts Colleges” (two).

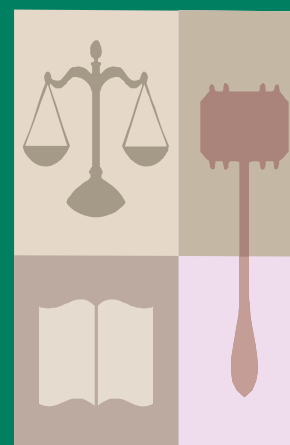
The information for preparing this ranking was gathered from a variety of national agencies and associations, as well as through the peer assessment survey from Synovate. Determination factors included the weighted categories of Peer Assessment, Graduation and Retention Rates, Faculty Resources, Student Selectivity, Financial Resources, Alumni Giving, and Graduation Rate Performance.

For more detailed information, log onto www.usnews.com/college or obtain a copy of the *American's Best Colleges* on newsstands.

Congratulations to all of you who contribute so much towards the successful recruitment and retention of college students at your institutions — as well as within our region!

CONGRATULATIONS
BOOK GIVEAWAY
WINNER!!

Amanda Peterson
Financial Aid
Counselor
University of Kansas



*“Legal Issues in the
Community College”
New Directions for Community Colleges,
No. 125
R.C. Cloud (ed.), San Francisco:
Jossey-Bass 2002*

REGION IV-WEST NEWSLETTER

The Region IV-West newsletter is published four times annually. All correspondence should be directed to the Editor, LeeAnna Lamb, University of Tulsa, at leeanna-lamb@utulsa.edu or at (918) 631-5059.

Winter Issue Submissions Due ~ November 26
Spring Issue Submissions Due ~ April 1
Summer Issue Submissions Due ~ June 10

Suggestions or comments? Please contact the Editor or a member of the Editorial Board:

Jay Corwin, University of Oklahoma
Emily Griffin Overocker, University of Oklahoma
Sherry Mallory, Ph.D., University of Arkansas
Myron Pope, Ed.D., University of Central Oklahoma
Kathy Rose-Mockry, University of Kansas
Merideth Sherlin, North Dakota State University

PROFESSIONAL DEVELOPMENT OPPORTUNITIES

October

- 13 Free Speech and Civility on Campus
- 18-21 Region IV-West Mid-Level Institute - Fargo, ND
- 21-23 Region IV-West Conference - Fargo, ND

November

- 11-13 Educating Intentional Learners: New Connections for Academic and Student Affairs

December

- 3-5 Fundraising in Student Affairs
- 9-11 The Leadership Educators Institute

January

- 6-8 Effective Interventions for Student Mental Health on Campus: Collaboration & Community
- 23-25 Institute for Aspiring SSAOs

March

- 19-23 NASPA National Convention - Tampa, FL

May

- 16-1 International Student Affairs Australian Study Tour

June

- 5-10 Shaping Student Affairs Leadership Through Global Perspectives: An International Institute for Senior-Level Administrators

July

- 24-28 24th Annual Stevens Institute

For more information, log onto the NASPA site at www.naspa.org/prodev/index.cfm. Click on the program you are interested in to view registration details, conference schedules, featured speakers, and other highlights.

NATIONAL ASSOCIATION OF STUDENT PERSONNEL ADMINISTRATORS

1875 Connecticut Ave. NW
Suite 418

Washington DC, 20009

Telephone: (202) 265-7500 Fax: (202) 797-1157

WISA Update Continued

KC, and ways to expand the scope. Though the purpose statement doesn't explicitly state it, the WISA KC is also a place for student affairs professionals, who work in programs to support women students, to come together and share ideas and resources.

Those of us who are lucky enough to work in Women's Centers know that every campus has a unique structure with regard to where the Women's Center fits within the institution. Most centers (if we're lucky enough to have one!) are fairly new to the student affairs profession. The oldest centers developed during the 1970's. Some are a part of Counseling Services, others a part of Student Involvement or Student Activities offices, and others are housed within academic departments. For this reason, there is no professional organization that specifically supports Women's Centers.

The **National Women's Studies Association** has begun to address this through the Women's Center Committee, a new group dedicated to providing Women's Center employees a forum in which to share resources and information. The WISA KC may further contribute to this exchange of information and resources for Women's Center staff members by explicitly expanding the scope of its mission to include this important work, as many other KC's provide a forum for other professionals to share information related to the important work that they do every day.

Please consider joining us in Fargo for a **WISA Knowledge Community-hosted dinner on Friday** night to discuss the book, and other important issues related to WISA - including sharing personal stories unique to women who work in student affairs!

If you are unable to attend the conference, but have specific ideas or feedback on ways that WISA may better serve you, please contact me at chris.linder@colostate.edu or at (970) 491-6384. I look forward to hearing from you!



LOOKING AHEAD . . .

NASPA NATIONAL CONVENTIONS

2005 Tampa, Florida (March 19-23)

2006 Washington, DC (March 11-15)

2007 Orlando, FL (TBD)

Work

I never did a day's work in all of my life. It was all fun.
-Thomas Edison

Nothing is really work unless you would rather be doing something else.
-J.M. Barrie

It is amazing how much people can get done if they do not worry about who gets the credit.
-Sandra Swinney

Anyone can do any amount of work, provided it isn't the work he is supposed to be doing at the moment.
-Robert Benchley

Think Before You Hit Send Continued

changes in time-off policies or benefits will generate questions. As a general rule, if it hits the old wallet, there will be questions, and those things should be dealt with face to face.

- If your e-mail discussion has gotten volleyed back and forth more than three times, it's time to stop and start a live discussion about the issue.
- Never put anything confidential in an e-mail. Things that should never be put in an e-mail: comments about performance, salary, etc.
- If you couldn't handle seeing it in the newspaper or in court, then don't send it in an e-mail. E-mail is never really private, and it's not easily deleted.
- Don't hide behind your e-mail. It will make you mysterious and possibly unliked. Log off and head to the cafeteria every once in a while, you'll be glad you did.

-adapted from abc.com

ODDS & ENDS



On Listening

The problem with communication is the illusion that it has occurred.
-George Bernard Shaw

Courage is what it takes to stand up and speak; courage is also what it takes to sit down and listen.
-Winston Churchill

The ear of the leader must ring with the voices of the people.
-Woodrow Wilson

The key to success is to get out into the store and listen to what the associates have to say. It's terribly important for everyone to get involved. Our best ideas come from clerks and stock boys.
-Sam Walton

Seasons

*Onion skin very thin,
mild winter's coming in;
onion skin thick and tough,
coming winter cold and
rough.*
-Anonymous



There are two periods when Congress does no business: one is before the Holidays, and the other after.
-George Dennison Prentice (1802-1870)
American journalist and humorist



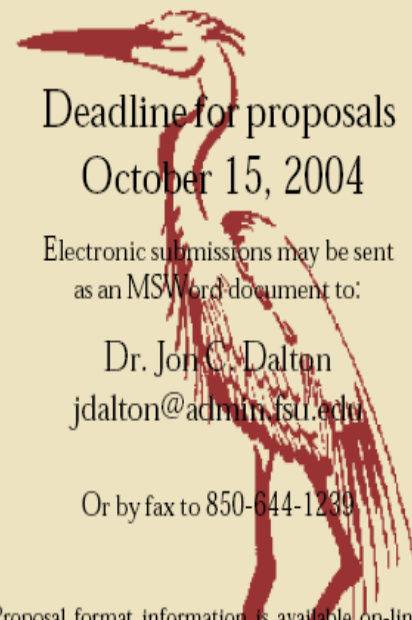
INSTITUTE ON COLLEGE STUDENT VALUES

February 3 - 5, 2005 • Turnbull Conference Center
Florida State University • Tallahassee, Florida

The Institute is sponsored by the Harder Center for Leadership and Ethics in Higher Education, the Florida State University Division of Student Affairs, and co-sponsored by the NASPA Spirituality Knowledge Community.

We are proud to announce the fifteenth annual Institute on College Student Values, a national conference that focuses on research and educational strategies for promoting moral, spiritual, and civic learning in college. The Institute includes featured speakers, workshops, roundtable discussions, exhibits, and special presentations on the research, leadership, and educational strategies used by colleges and universities to promote holistic development of moral and civic capacities in their students.

Our theme this year, *"Leadership with Spirit: How Colleges Prepare Students to Lead With Moral Purpose and Commitment,"* focuses on how colleges and universities help students become leaders with authenticity, purpose, and moral conviction.



Deadline for proposals
October 15, 2004

Electronic submissions may be sent
as an MS Word document to:

Dr. Jon C. Dalton
jdalton@admin.fsu.edu

Or by fax to 850-644-1239

Proposal format information is available on-line at
www.CollegeValues.org/CALL.cfm

For more information regarding program proposals, conference registration, or general Institute information, please contact Sally Kline, Institute on College Student Values Program Chair: slk03d@fsu.edu, or visit the 2005 Institute website at www.collegevalues.org/institute.cfm.

Public Policy Update Continued

home state and request voter registration forms for all enrolled degree- or certificate-seeking students; and (2) the institution must ensure that every student who takes a class on campus receives a voter registration form. For additional information, visit the NASPA Public Policy website at www.naspa.org/policy/voterreg_page.cfm, or the NAICU "Your Vote, Your Voice" website at VoteVoice2004/index.htm.

The NASPA Center for Public Policy will continue to monitor activity on Capitol Hill, and will provide updates as

information becomes available. A "Friends of Public Policy" listserv has been established, for interested parties. To sign up, send a blank e-mail to fopp-join@listserv.naspa.org.

If you would like more information about the NASPA Center for Public Policy, visit the website at www/naspa.org/policy/index.cfm or contact Sherry Mallory, Region IV-West Public Policy Coordinator at smallor@uark.edu or (479) 575-6786.

2004-2005

REGIONAL BOARD MEMBERS

Anderson, Cheryl

Dean of Students
Wichita State University
316-978-3023
cheryl.anderson@wichita.edu
2005 Regional Conference Chair

Billar, Gary

Vice President for Student Services
Arkansas Technical University
479-968-0238
gary.billar@mail.atsu.edu
SSAO Liaison & Retreat Coordinator

Caires, Matthew

Assistant Dean of Students
University of Wyoming
307-766-3296
caires@uwyo.edu
Fraternity & Sorority Affairs KC Chair

Campbell, Brett

Provost for Student Affairs
Tulsa Community College
918-595-7901
bcampbell@tulsa.edu
Two-Year & Community College KC Chair

Cervantes, Rosa

Senior Student Program Advisor
University of New Mexico
505-277-5020
iscla@unm.edu
Latino/a Knowledge Community Chair

Covington, Philip

Dean of Students
Arkansas Technical University
479-968-0239
philip.covington@mail.atsu.edu
Knowledge Community Chair Coordinator

Doyle, Diana

VP of Educational and Student Services
Western Nebraska Community College
308-635-6103
didoyle@wncc.net
Past Regional Vice President

Fortney, Jesse

Director of Student Services/Career Services
University of Colorado
303-315-7678
jesse.fortney@uchsc.edu
New Professionals/Grad. Students KC Chair

Gonzalez, Alex

Manager, Student Financial Aid
University of New Mexico
505-277-9073
agonzale@unm.edu
New Mexico Membership Coordinator
Corporate Sponsor Liaison Assistant

Grassmeyer, Kimberly

Vice President for Student Development
College of St. Mary
402-399-2422
kgrassmeyer@csm.edu
Mid-Level Institute Co-Chair

Griffin Overocker, Emily

Graduate Student
University of Oklahoma
405-325-0460

egriffin@ou.edu

Oklahoma Membership Coordinator

Grospitch, Eric

Assistant Director, Student Housing
University of Kansas
785-864-7220
egrospitch@ku.edu
Kansas Membership Coordinator

Harper, Ruth

Professor, Couns. & Human Resource Devo.
South Dakota State University
605-688-4364
Ruth_Harper@sdsstate.edu
Faculty Liaison

Jim Hermelbracht

Director of Hansen Leadership Program
Doane College
402-826-8271
jim.hermelbracht@doane.edu
Small College & University KC Chair

Jones, Ann

Assistant Director, Career Services Center
University of Wyoming
307-766-2398
ajones@uwyo.edu
Wyoming Membership Coordinator

Kaberline, Chris

Associate Director for Housing
University of Nebraska-Lincoln
402-472-3872
kaberline2@unl.edu
Nebraska Membership Coordinator

Kopita, Ron

Vice President - Student Affairs
Wichita State University
316-978-3021
Ron.kopita@wichita.edu
Regional Conference Chair 2004

Lamb, LeeAnna

Director, Allen Chapman Activity Center
University of Tulsa
918-631-5059
leeanna-lamb@utulsa.edu
Regional Newsletter Editor

Linder, Christina

Assistant Dir. Women's Programs & Studies
Colorado State University
chris.linder@colostate.edu
Women in Student Affairs Coordinator

Lucas, Mark

Dean of Students/Director of Student Life
University of Missouri-Columbia
573-882-3621
Lucasm@missouri.edu
Missouri Membership Coordinator

Dayna Mackey

Residence Hall Director
University of Arkansas - Fayetteville
479-718-1773
dmjohns@uark.edu
Arkansas Membership Coordinator

Mahon, Patricia

VP for Student Affairs & Dean of Students
South Dakota School of Mines & Tech.
605-394-2416
Patricia.Mahon@sdsmt.edu
Regional Membership Services Coordinator

Major, Linda

Director for Student Involvement & Project Director
for NU Directions

University of Nebraska-Lincoln

402-472-2454

lmajor1@unl.edu

Alcohol and Other Drugs KC Chair

Mallory, Sherry

Assistant to the Vice Chancellor
University of Arkansas - Fayetteville
479-575-6786
smallor@uark.edu
Public Policy Knowledge Community Chair

Mathew, Prakash

Dean of Student Life
North Dakota State University
701-231-8240
prakash.mathew@ndsu.nodak.edu
Regional Vice President

McGill, Lisa

Disability Resources & Services
University of Colorado at Denver
303-556-3450
lisa.mcgill@ucdenver.edu
DisAbility Concerns KC Chair

McClusky, Jennifer

Director of Retention Initiatives
Maryville University
314-529-9561
jmccuskey@maryville.edu
SA Professionals & Academic Affairs KC Chair

McReynolds, Mary Jane

Research Associate Professor
University of New Mexico
505-254-3962
mjmcreynolds@sahud.unm.edu
Administrators in Student Services KC Chair

Oster-Aaland, Laura

Director of Orientation & Student Success
North Dakota State University
701-231-7750
laura.oster-aaland@ndsu.nodak.edu
North Dakota Membership Coordinator

Overocker, Josh

Center Coordinator, Housing/Food Services
University of Oklahoma
405-325-1283
joverocker@ou.edu
Information Technology KC Chair

Pena, Yvonne

Student Affairs Specialist
University of New Mexico
505-277-3361
ypena@unm.edu
Minority Undergraduate Fellows Program Chair (MUIFP)

Perez, Ruben

Coordinator for Leadership Programs
University of Kansas
785-864-4861
rperez@ku.edu
Student Leadership Programs KC Chair

Pletcher, Jill

Director, Career Services
Wichita State University
316-978-6830
jill.pletcher@wichita.edu
Mid-Level Institute Co-Chair

Pope, Myron

Assistant Vice President of Student Services
University of Central Oklahoma
405-974-3817
mpope5@ucok.edu
Professional Standards Chair

Quisenberry, Aaron

Associate Director, Center for Student Life
University of Kansas
785-864-4861
aquisenberry@ku.edu
Service Learning KC - Special Projects

Rames, Marysz

Vice President of Student Affairs
South Dakota State University
605-688-4493
marysz_rames@sdsstate.edu
South Dakota Membership Coordinator

Reichert, Kimberly

Assistant Vice President of Student Affairs
University of Wyoming
307-766-5123
reichert@uwyo.edu
Regional Treasurer

Rossi, Richard

Associate Vice President - Student Services
Creighton University
402-280-2717
rrossi@creighton.edu
Corporate Sponsor Liaison

Schneikart-Luebbe, Christine

Dean of Enrollment Services
Wichita State University
316-978-3149
Christine.Luebbe@wichita.edu
Awards & Exemplary Programs Coordinator

Sene, Jacqueline

International Education Coordinator
Colorado State University
970-491-7464
jsene@lamar.colostate.edu
International Education KC Chair

Sperling, Deanne

University Conference Coordinator
North Dakota State University
701-231-9736
deanne.sperling@ndsu.nodak.edu
Assistant to Regional Vice President

Stoner, Ruth

Budget and Personnel Administrator
University of Kansas
785-864-4060
rstoner@ku.edu
Regional Historian

Strom, SueAnn

Assoc. Professor - Educational Leadership
University of Arkansas - Little Rock
501-569-8944
sastrom@ualr.edu
Coordinator of Research Division

Thomas, Anna

Student Activities Manager
Johnson County Community College
913-459-8500
athomas01@jccc.net
African American Concern KC Chair

Williams - Molock, Jennifer

Director of Black Student Services
Colorado State University 980-491-5781
jennifer.molock@colostate.edu
Colorado Membership Coordinator

Wynn, Kerry

Director, Learning Enrichment Center
Southeast Missouri State University
573-651-2273
kwynn@semo.edu
Spirituality in Higher Education KC Chair

NASPA IV-West Newsletter
LeeAnna Lamb, Editor
The University of Tulsa
440 South Gary Avenue
Tulsa, OK 74104

NASPA REGION IV-WEST

Arkansas
Colorado
Kansas
Manitoba
Missouri
Nebraska
New Mexico
North Dakota
Oklahoma
Saskatchewan
South Dakota
Wyoming



Address or membership changes?

Contact NASPA via the web

<http://www.naspa.org/membership/coaform.cfm>