

# JCC Connexions

Quarterly Newsletter About the *Journal of College and Character*

Vol. 2, No. 4, November 2016



## JCC Editors Highlight Scott Seider's Research on Community Service Learning

**Scott Seider** has been JCC's contributing editor of the Civic Engagement on Campus column for seven years and is stepping down this fall as he continues more focused research in the secondary education field, specifically on the topic of the development of critical consciousness in adolescents attending a diverse set of urban high schools.



Over the years Scott authored and recruited articles for the Civic Engagement section that spanned many different perspectives on community service learning, and he often provided findings from studies on Harvard University's student-run homeless shelter. Two of his books, *Shelter: Where Harvard Meets the Homeless* (2010) and *Compass: How Powerful School Culture Can Point Students Toward Success* (2012) won the American Educational Research Association's outstanding book award in moral development and education. With colleague Dan Butin of Merrimack College, he served as a guest editor of a JCC [special issue](#) on "The Future of Community Engagement in

Higher Education" in February 2012.

Scott's [final column contribution](#) for Civic Engagement is "For Youth, By Youth: A Third Student-Run Homeless Shelter." In this article, Scott interviews two recent Harvard graduates, Sam Greenberg and Sarah Rosenkrantz, who had volunteered at the Harvard Square Homeless Shelter as college students. Sam and Sarah, seeing a need within the Boston and Cambridge communities for a homeless shelter serving young adults, worked with Harvard College undergraduates to open Youth-to-Youth (Y2Y) Harvard Square, a homeless shelter exclusively for young adults ages 18-24. Y2Y Harvard Square is based on the Harvard Square Homeless Shelter's student-run model, which Scott often wrote about in his column.

Scott is JCC's Focus Author for this issue, and we highlight his impressive work and research as Civic Engagement on Campus contributing editor as well as we include reference to other authored articles in the JCC beginning in 2007.

Currently Scott is associate professor of education at Boston University. His research focuses on the civic and character development of adolescents and has received funding support from the National Academy of Education, Spencer Foundation, Templeton Foundation, and Canadian Institute of Health Research.

[Focus Authors](#)

[Current JCC Issue](#)

[Newsletters](#)

[Seider Blog Post](#)

[Seider Article](#)



## Seider's Research on Community Service Learning (cont. from page one)

Prior to joining the Boston University faculty, he worked as an English and literacy teacher in the Boston and Westwood (MA) Public Schools. He earned an Ed.D. in Human Development & Psychology from Harvard University and an A.B. in English & American Literature from Harvard College. He currently serves on advisory boards

for Character.org, EL (Expeditionary Learning) Education, the Spencer Foundation, *Applied Developmental Science*, and the *Journal of Adolescent Research*. For a list of links to Civic Engagement column articles in the *JCC*, see below.

### Civic Engagement on Campus (Click on links below)

[Tiers of Understanding at the Harvard Square Homeless Shelter](#)

Scott C. Seider, Vol. 10 , Iss. 6, 2009

[Puzzling Over Community Service and Reflection](#)

Scott C. Seider, Susan Gillmor, Jenna Leavitt, and Samantha Rabinowicz, Vol. 10, Iss. 7, 2009

[College Students, Creative Non-Violence and Social Enterprise: Community Service Changes with the Times](#)

Scott C. Seider Vol. 11 , Iss. 2, 2010

[Educating for Lives of Purpose: College Student Volunteers Reflect on High School Service](#)

Scott C. Seider, Vol. 11 , Iss. 3, 2010

[Engaging College Students from Diverse Backgrounds in Community Service Learning](#)

Sarah Novick, Scott C Seider, and James P Huguley, Vol. 12, Iss. 1, 2011

[Challenging Privileged College Students' Othering Language in Community Service Learning](#)

Scott C. Seider & Amanda Hillman, Vol. 12 , Iss. 3, 2011

[Introduction to Special Issue on "The Future of Community Engagement in Higher Education"](#)

Scott C. Seider and Dan W. Butin, Vol. 13 , Iss. 1, 2012

[The Second Student-Run Homeless Shelter](#)

Scott C. Seider, Vol. 13 , Iss. 3, 2012

[Two Key Strategies for Enhancing Community Service Learning](#)

Scott C. Seider, Vol. 14 , Iss. 1, 2013

[College Access, Student Success, and the New Character Education](#)

Madora Soutter & Scott Seider, Vol. 14 , Iss. 4, 2013

[Engaging College Students and Cadets in Training Tomorrow's Leaders of Character](#)

Shelby Clark and Scott Seider, Vol. 15, Iss. 4, 2014

[A Critically Conscious Approach to Fostering the Success of College Students from Underrepresented Groups](#)

Scott C. Seider, Shelby Clark, and Madora Soutter, Vol. 16, Iss. 4, 2015

[For Youth, By Youth: A Third Student-Run Homeless Shelter](#)

Sam Greenberg and Sarah Rosenkran

### Other Articles in JCC

[Frame-Changing Experiences and the Freshman Year: Catalyzing a Commitment to Service-Work and Social Action](#)

Scott C. Seider, Vol. 8 , Iss. 2, 2007

(Peer Reviewed)

[Lessons From a Hunger Strike at Harvard](#)

Scott C. Seider, Vol. 9, Iss. 3, 2008

(Opinions & Perspectives)

[The Fragmented Generation](#)

Scott Seider and Howard Gardner, Vol. 10 , Iss. 4, 2009 |

(Opinions & Perspectives)

## Janett C. Ramos & Ambassadors Expand Virtual Outreach Through Social Media

**Janett C. Ramos**, *JCC*'s new dynamic associate editor for social media, is leading the way in expanding the number of innovative opportunities to promote the *JCC* and its mission. She and *JCC*'s Ambassador team—**Sable Manson, Sarah Nichter, and Kevin Wright**—are taking advantage of the journal's social media outlets in diverse ways; for example, they are promoting current journal articles by posting links on Facebook to one highlighted article each Monday, utilizing [Twitter](#) for virtual exchanges through [#JCCtweets](#), and will soon capture Instagram photos of colleagues reading the *JCC* around the world. Janett urges *JCC* readers and subscribers to get on board and post their Instagram photos in November!

The Ambassador team has also partnered with the Spirituality and Religion Knowledge Community (SRHE) to grow its virtual outreach efforts. During the month of November, SRHE and *JCC* will highlight the work of author and retiring *JCC* contributing editor Scott Seider of Boston University. During November, **Michael Waggoner**, editor of the journal *Religion and Education* and a leading presence in promoting research and discussion in the field, will discuss his recent *JCC* article "Spirituality and Contemporary Higher Education" at the Inaugural Virtual Hangout sponsored by *JCC* and SRHE. Follow [#JCCtweets](#) to stay informed and participate in our Twitter hangouts.

### ***JCC* Invites Individuals to Apply to Serve as Ambassadors**

Janett and the *JCC* invite persons interested in research and practice in the field of moral and civic development of college students to consider applying to serve on the Ambassador team. Those selected to serve as a *JCC* Ambassador can develop their own virtual brand.

For persons wanting to find out more about *JCC* Ambassadors

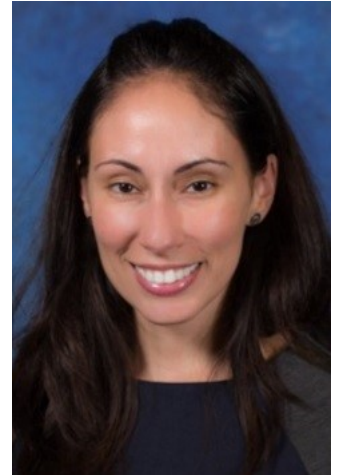
and how to apply should contact Janett directly at [janettcramos@gmail.com](mailto:janettcramos@gmail.com).

### ***JCC* Welcomes Janett Ramos as Associate Editor for Social Media**

Janett joined the *JCC* editorial team in August, 2016. Her research focuses on spirituality and the impact it can have on first generation college students' perseverance and retention. Upon completing her Ed.D in ethical leadership at Olivet Nazarene University, Janett hopes to become a senior student/academic affairs officer to continue facilitating learning experiences and increasing accessibility to high quality education for college students throughout the world.

Currently she is the assistant director for new student and transition programs at Northeastern Illinois University. In this role, she oversees placement testing, summer transition programs, orientation, and family programs for students across four campuses.

Before coming to Northeastern, Janett worked at Semester at Sea, Illinois Mathematics and Science Academy, Barnard College/Columbia University, Boston College, and Montclair State University. Janett has been a competitive dancer and pianist since the age of four and loves teaching others how to use movement to increase their self-esteem, confidence, gravitas as well as to have fun.



## Index of Blog Posts in *JCC Connexions*

- H Chen & C Yarnal & others: "Should Students' Use of Leisure Time Matter to College Educators?"
- J. Dalton: "Do Colleges and Universities Perpetuate Income Inequality by Favoring The Wealthiest Students?"
- K. Guthrie: "Undergraduate Certificate In Leadership Studies: An Opportunity For Seamless Learning"
- M. Jackson: "What Are the Challenges & Rewards of Being Student Affairs Professionals?"
- F. Lane & J. Schutts: "Predicting the Presence of Purpose Through the Self-Efficacy Beliefs of One's Talents"
- P. Mather with replies from C. Broadhurst, G. Martin, & L. Harrison: "Student Activism and Advocacy"
- P. Mather, C. Bridges, & M. Johnson: "Research on Social Change and Social Justice"
- D. Morgan & co-authors, H. Zimmerman, T. Terrell, & B. Marcotte: "Should Fraternities Be Banned From College Campuses?"
- G. Paine: "Caring About Students – The Work of Student Affairs"
- M. Swanbrow Becker & D. Drum: "When and How Should We Intervene in Students' Lives?"
- S. Seider: Trigger Warnings: Just Good Teaching? Critical Conversation #7
- S. Watt with replies from L. Roper and C. King: "Racial Conflicts as Learning Opportunities"
- M. Waggoner: "Should Colleges & Universities Care About Spiritual Beliefs of Students?"

## Elena Sandoval-Lucero and CCA Are Committed to “Inclusive Excellence”

**Elena Sandoval-Lucero**, vice president of student affairs at Community College of Aurora (CCA) in Colorado, is collaborating on a book chapter with colleagues at CCA entitled, “Engaging Inclusive Excellence: Creating a College with an Equity Mindset,” describing the college’s efforts to implement an inclusive excellence model <https://www.ccaurora.edu/about-cca/inclusive-excellence>.

The inclusive excellence model (IE) is based on CCA’s commitment to equity, diversity, and inclusion through an environment of excellence. Some objectives of the plan include putting into place evidence-based and inclusive teaching strategies and curriculum in the classroom; providing high quality, inclusive, and responsive programming and services outside the classroom; assessing and evaluating inclusiveness in practices, policies, and outcomes; fostering a climate for open dialogue; and facilitating opportunities for cross-cultural interaction.

Two campus initiatives include a [campus survey](#) and a [training program](#) for college employees. Elena is also working with the CCA’s director of outreach and recruitment on an article outlining how student learning can be measured in orientation.

Her research interests span a wide range of topics relating to the field of higher education and student development and achievement: student retention and success, career development, post-traditional students in higher education, recruitment and retention of diverse students, community college leadership, new student orientation, career ladder programs for paraprofessionals, and effective supervision in educational settings.



Among her responsibilities as chief student affairs officer for CCA, she anticipates and stays informed of emerging issues, remains active in research, scholarship, and the student affairs profession including holding several roles within NASPA, including serving on the editorial board of the *Journal of College and Character*. She also currently teaches in the higher education program at the University of Denver.

Elena holds a Ph.D. and M.A. from the University of Colorado Denver and a B.A. from the University of Northern Colorado and serves on JCC’s editorial board.

### **"Cultivating Practical Wisdom: Senior Student Affairs and Higher Education Leaders Reflect on Journeys in College Leadership A Special Collection in the *Journal of College & Character* [Free Access Here](#)**

Practical wisdom is the expertise gained through accumulated life experiences and the knowledge and insights derived from personal reflection on these experiences. This special collection of the *Journal of College and Character* focuses on the practical wisdom of eleven senior student affairs and higher education leaders who reflect on their leadership journeys and share their practical wisdom gleaned from the values, experiences, and insights of a lifetime of work in higher education.

- “Reflections on a Life and a Career in Student Affairs,” Michael Jackson
- “Trustworthy Leadership,” Diana C. Walsh
- “Spirituality and Leadership,” Susan Komives
- “From Here to Clare: Yearnings of a Scholar-Turned-Dad,” Carney Strange
- “Learning to Lead, Learning to Love: A Personal Journey Toward Wholeness,” Shirley H. Showalter
- “Authenticity and Spirituality in Higher Education: My Orientation,” Arthur W. Chickering
- “Pilgrimage to My Roots: Exploring Student Affairs and Spirituality in Ireland,” Margaret Jablonski
- “Some Personal Reflections After 42 Years in Student Affairs,” Arthur Sandeen
- “You Can’t Rock the Boat if You’re Rowing It: And Other Observations About Life as a Student Affairs Administrator,” Gregory S. Blimling
- “An Excerpt from *Cool Passion: Challenging Higher Education*,” Arthur W. Chickering
- “Expatriate Workers in International Higher Education,” Dennis C. Roberts
- “A Daufuskie Island Lad in an Academic Community: An Extraordinary Journey of Personal Transformation,” J. Herman Blake & Ervin R. Simmons





## NASPA Student Leadership Programs KC Launches Leadership Podcast Series

The NASPA Student Leadership Programs Knowledge Community (SLPKC) has launched a [Leadership Podcast](#) series, featuring such guests as NASPA President **Ken Kruger, John Dugan, and Susan Komives.**

For example, episode 7 features **Laura Osteen**, director of the Center for Leadership at Social Change at Florida State University, who talks about "leadership moments," leadership change agents, diversity of role models, ground-breaking leadership initiatives, and ways she processes ongoing "lessons learned," among other topics. Persons interviewed also answer host Miles Surret's (of George Washington University) "rapid fire" questions and attempt to parse out the true and false facts relating to leadership program history that Miles poses to them.

The podcast series also highlights impressive leadership programs nationwide such as Duke University and William and Mary.

SLPKC's other initiatives this year include updating valuable resources on the NASPA SLPKC Resources webpage, which features book reviews, recommended readings, leadership publications, activities, trainings, and other resources helpful for leadership educators. They are also busily preparing for the 99<sup>th</sup> NASPA Annual Conference through reviewing programs, matching graduate students with mentors in the student leadership field, sponsoring a full-day pre-conference initiative, and planning other SLPKC-specific sessions.



In addition, SLPKC celebrates the work of colleagues of student leadership programs through the knowledge community's annual awards nomination processes. As a resource for higher education professionals who have professional interest in leadership training, education, and development for college

students, this knowledge community shares best practices, provides critical evaluation of the field, examines standards for leadership programs, supports national and regional efforts to develop student leadership programs,

makes contributions to the literature, recognizes exemplary programs, and cultivates a forum for the presentation of new ideas.

SLPKC co-chairs **Jimmy Brown** and **Kim Kushner** identified strategic goals for the 2016-2018:

- Increase SLPKC's online presence through use of social media and interactive features on NASPA website.
- Find opportunities for members to have face-to-face interactions, both regionally and during our NASPA Annual Conference.
- Strengthen relationships between SLPKC and other Knowledge Communities, reaching a broader professional audience.
- Strengthen NASPA Regional connections, finding new opportunities for our Regional Representatives to serve as resources for best practices and current research related to student leadership training and development.
- Create scholarly research opportunities for leadership educators in all aspects of leadership development and assessment.

Jimmy and Kim bring their professional experience in leadership as they lead SLPKC as a dynamic and innovative knowledge community of NASPA. Jimmy is the associate director for student leadership development at the University of Chicago, where he is responsible for the design, implementation, marketing, and evaluation of student development programs focusing on leadership and engagement. He currently directs the [UChicago Leads](#) initiative—an umbrella initiative charged with supporting the leadership development efforts across all of the units within campus and student life.



Kim serves as the events and new student programs coordinator at the University of Missouri-Kansas City (UMKC). In this role, Kim oversees orientation and other new student and family events, including the creation of the UMKC Parent and Family Council and Office of Admissions recruitment initiatives.

For more information about the NASPA SLPKC, please visit their [website](#) and find them on social media.

## Sue Saunders and Colleague Develop Model of Ethical Decision Making

After more than 40 years working in student affairs as either an administrator or faculty member, **Sue Saunders**, extension professor emerita at the University of Connecticut, continues to be interested in the successful transitions of master's students to professional practice. Specifically, she is intrigued by such questions as

- How can supervisors and new professionals challenge and support each other toward greater integrity, more equitable and inclusive practice, and deeper understanding of the complexities of ethical decision-making?
- How does our shared understanding of ethical practice evolve in university cultures characterized by increasing commercialization, instant and contentious communication, and disturbing campus violence?

Christine Wilson, assistant vice president of student affairs, University of Connecticut and Sue have developed a model of ethical decision making that incorporates professional standards and reflective strategies. This model is the centerpiece of

their chapter in the 7<sup>th</sup> edition of the *Student Services Handbook*, published by Jossey-Bass. Before serving as extension professor and director of the Higher Education and Student Affairs Administration Program at the University of Connecticut, Sue was a faculty member at the University of Georgia. She also served in senior student affairs positions in Pennsylvania and Virginia.

The author of 45 publications, including the *Learning through Supervised Practice in Student Affairs* (2014), Sue's other research interests include professional development best practices and staff supervision. She holds a Ph.D. in counseling and student personnel services from the University of Georgia and is the Best Practices contributing editor of the JCC.



### *Journal of College & Character* Editors

Jon C. Dalton, Co-Editor, The Florida State University  
Pamela C. Crosby, Co-Editor, NASPA – Student Affairs Administrators in Higher Education  
Peter Mather, Senior Associate Editor, Ohio University  
Nicholas A. Bowman, Associate Editor, Bowling Green State University  
Pu-Shih Daniel Chen, Associate Editor, University of North Texas  
Mathew Johnson, Associate Editor, Central Michigan University  
Jenny Small, Associate Editor, Independent Scholar  
Janett C. Ramos, Associate Editor for Social Media, Northeastern Illinois University

### Contributing Editors

Michael Cuyjet, *Opinions and Perspectives*, University of Louisville  
David M. Eberhardt, *What They're Reading*, Birmingham-Southern College  
Cassie Meyer, *Interfaith Cooperation*, The Interfaith Youth Core  
Eboo Patel, *Interfaith Cooperation*, The Interfaith Youth Core  
Tiffani Riggers-Piehl, *Spirituality on Campus*, Baylor University  
Larry D. Roper, *Ethical Issues on Campus*, Oregon State University  
Darbi L. Roberts, *International Perspectives*, Columbia University  
Dennis C. Roberts, *International Perspectives*, Independent Consultant  
Sue Saunders, *Best Practices*, University of Connecticut  
Scott Seider, *Civic Engagement on Campus*, Boston University

### JCC Ambassadors

Sable Manson, University of Southern California  
Sarah Nichter, Sullivan University  
Kevin Wright, University of Cincinnati

For more information about these publications, email Pam Crosby, co-editor, at [jcc@naspa.org](mailto:jcc@naspa.org)

*Journal of College and Character* and *JCC Connexions* are published by  
NASPA – Student Affairs Administrators in Higher Education

## Lynda Konecny to Serve as Faculty Member of NASPA 2016 Region IV-W/E

**Lynda Tierney Konecny**, associate professor of health education in the College of Graduate Health Studies A.T. Still University, will serve as faculty member for NASPA's 2016 Region IV-W/E Mid-Level [Institute](#) (MLI). MLI will be held in conjunction with the IV-W and IV-E Joint Regional [Conference](#).

MLI provides faculty-led teams, case studies, small group discussions, and personal reflection time for those professionals who have a minimum of five years' full-time experience and department supervisory, budget and/or programming responsibilities. At the institute Lynda will facilitate discussion on leadership in higher education and life in the academy.

Having had an extensive career in higher education that includes holding several positions within student affairs and working in a variety of higher education settings, Lynda has developed a strong sense of the need for wellness programming and balance in the dimension of wellness for students, faculty, staff, and family members.

Her research interests include the development, implementation, and evaluation of innovative teaching methodologies, and introducing new technologies to enhance curriculum delivery and student learning. She also focuses on educating and improving overall wellness, or di-

mensions of wellness, within various and diverse populations. In addition, she is interested in examining learning theory in relation to online and residential instructional design, assessing the effect and value of student services for the online learner, and psychological research emphasizing behavior modification in education settings.

She has developed and implemented leadership, wellness, diversity, and community programming within colleges and universities and is an experienced national and international presenter.

Holding a doctor of health education degree from A.T. Still University's School of Health Management, a master of science in counseling/student personnel services from Emporia State University, and a bachelor of science in behavioral psychology from Northern Michigan University, Lynda is a certified health education specialist, and a nationally certified personal trainer and group fitness instructor. Lynda spent many years serving in the U.S. Army Reserves.



### "Inclusion & Isolation: Restoring Trust and (Re)Building Community on Campus"

The Dalton Institute is in the homestretch as institute planners look to the 2017 conference. To be held **February 2-4, 2017**, on the campus of Florida State University in Tallahassee, the 27th annual Jon C. Dalton Institute on College Student Values will explore the important theme of ***Inclusion & Isolation: Restoring Trust and (Re)Building Community on Campus***.

Because the need for higher education practitioners to understand relevant scholarship increases, this year's participants will experience a more structured research component that will include an inaugural paper session, which will present recent and ongoing scholarship on inclusion, isolation, and students' experiences on today's college campus. Two keynote presenters, **Allysa N. Rockenbach** and **Sam Museus**, also bring their backgrounds and expertise to the Institute as producers of extensive research in these areas.

**Beverly Daniel Tatum**, president emerita of Spelman College and noted author, will present an interactive approach to her keynote address in the form of a "fireside chat," which will encourage engagement among attendees, while **Vernon Wall** will share insights from his career as a practitioner, consultant, and social justice advocate.

This year's pre-conference session will feature a workshop by Florida State's NCBI trainers. The National Coalition Building Institute is a national organization dedicated to producing campuses, organizations, and cities that proactively address community needs by embracing diversity and shaping leaders with the attitudes and skills necessary for success in an increasingly global world.

Registration is now open, and earlybird rates expire on **December 5, 2016**. Participants will want to arrive in Tallahassee in time to take part in the important (and free!) pre-conference workshop. As always, we look forward to providing the hospitality, networking, and engagement that you have come to expect from the Dalton Institute. To learn more about the Dalton Institute, including how to attend this year, interested persons should go to <https://studentvalues.fsu.edu/>



## News and Offerings From NASPA's Expert in Residence

Work continues for the preparation for the 2017 NASPA Religious, Secular, and Spiritual Identities Convergence, a [major conference](#) to be held at UCLA on **May 22–24, 2017**. Registration for this gathering is open, and a call for proposals has been opened recently.

Participants can expect opportunities to be a part of a special issue of the *Journal of College and Character* should their program be selected.

**Cody Nielsen**, NASPA's expert in residence in religious, secular, and spirituality, invites faculty, authors, chaplains, and others to join him for live briefings and interviews. Here is a snapshot of recent and upcoming guests and topics:



<b>Religion in Higher Education: The Place of Religion in Campus Life and Learning</b> Douglas "Jake" Jacobsen, Rhonda Hustedt Jacobsen, and J. Cody Nielsen	<b>December 14, 2016</b>
<b>Hindu Beliefs on Campus</b> Anju Bhargava, J. Cody Nielsen	<b>January 26, 2017</b>
<b>Sikh Beliefs on Campus</b> Simran Jeet Singh, J. Cody Nielsen	<b>February 15, 2017</b>
<b>Islam in America and on Our Campuses: Reducing Stigma, Increasing Support</b> J. Cody Nielsen, Amer F. Ahmed	<b>On Demand</b>
<b>Values, Leadership, and Religious Identity</b> Sharon Parks, J. Cody Nielsen	<b>On Demand</b>
<b>Understanding Humanism: A Conversation with Chris Stedman, Humanist Chaplain</b> Chris Stedman, J. Cody Nielsen	<b>On Demand</b>
<b>Hillel: A Jewish Foundation on Campus</b> J. Cody Nielsen, Hal Ossman	<b>On Demand</b>

### JCC Special Topics Session at NASPA and JCC *Connexions* Blog Preview



The *Journal of College and Character* authors' session at the Annual NASPA conference in March 2017 will focus on how religious and spiritual identity dynamics shape student experiences.

**Janina Montero**, former vice chancellor of student affairs at UCLA, will present on an [article](#) she co-authored with **Eboo Patel**, **Cindy Love**, and **Mary Ellen Giess** on handling the complexities of religious and spiritual diversity on campus. **Darris Means**, assistant professor in the Student Personnel Program at the University of Georgia, will discuss his [article](#) on the role of spirituality in the lives of African American gay and bisexual men.

These articles highlight different methodological approaches taken by JCC authors and support strategies for attending to the spiritual and religious realities of today's college students.

The two participating authors, along with session coordinator and senior associate editor of the *JCC*, **Pete Mather**, will initiate a conversation on the *JCC Connexions* [blog](#) in January, prior to the NASPA conference.

### SRHC KC Presents Preconference Workshop

The Spirituality and Religion in Higher Education Knowledge Community (SRHE KC) will present a pre-conference workshop, *Engaging Interfaith: Creating Meaningful Religious, Secular, and Spiritual Diversity Resources Throughout Campus*, at the upcoming NASPA 2017 national conference.

Higher education professionals often work in formal and informal spaces to foster religious, secular and spiritual (RSS) engagement. Often educators struggle to move this work from the margins into the everyday campus experience. This session will examine the ways that programming for RSS identity and engagement intersect with the breadth of functional areas and competencies in student affairs. Participants will learn strategies for institutionalizing RSS engagement on their campuses.

In order to register, follow this [link](#).

If you have any questions, please contact Janett C. Ramos ([j-ramos29@neiu.edu](mailto:j-ramos29@neiu.edu)), KC's social media chair.

