

# LEARN. ENGAGE. ADVANCE.

The leading voice for the student affairs profession worldwide.



## WHICH ONE OF THESE IS NOT LIKE THE OTHER?

Hello from the Region IV West Multiracial Knowledge Community (MRKC). We work to increase our membership of MRKC members, serve as advocates for multiracial people, and develop and disseminate knowledge to Region IV-West about current happenings in higher education that pertain to our multiracial community. [For rest of Blog, click here.](#)



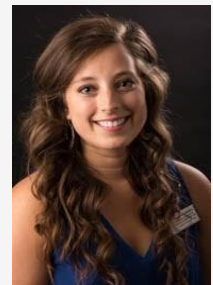
## NASPA IV-WEST/EAST REGIONAL CONFERENCE November 15-17, 2016 Historic Union Station: St. Louis, Missouri

## CONFERENCE TRAVEL ON A SHOESTRING BUDGET

Have you begun travel planning for the NASPA IV-WE conference in St. Louis this November? I hope so, but many of us need to develop a cost-effective plan to get there. Diminished resources for professional development opportunities, including but not limited to conference travel, seems to be the new normal. [For rest of Blog, click here.](#)

## WELCOME BRIANA CRESSWELL - NASPA IV-W GRADUATE STUDENT REPRESENTATIVE

Please join me in welcoming Briana Cresswell from the University of Central Arkansas to the NASPA IV-W Advisory Board. Briana will serve in the position of Graduate Student Representative for the upcoming year. [For rest of Blog, click here.](#)



## AN EARLY SUMMER UPDATE FROM YOUR REGIONAL DIRECTOR

hope your summer is bringing you time to reflect on your career, life goals, and pursuing your own development. While summer is here, strategic planning, budget development, learning outcomes, orientation, and job searches seem to be abundant. [For rest of Blog, click here.](#)



## STUDENTS FEATURING STUDENT AFFAIRS PROFESSIONALS: THE POWER OF COLLABORATION

When we look up the work featuring, or feature, it is define as be “a significant characteristic of or take an important part in”. Artists are famous for featuring another artist on a song or record. [For rest of Blog, click here.](#)



## GETTING INVOLVED WITH THE IV-WEST FAMILY IS EASY

Getting involved in NASPA IV-W has led me to great friends, growing as a student affairs professional and wanting to give back! The Student Affairs professionals that I have had the pleasure working alongside are the most caring and genuine people you will find. [For rest of Blog, click here.](#)



## KNOWLEDGE COMMUNITY SPOTLIGHT - INTERNATIONAL EDUCATION KNOWLEDGE COMMUNITY (IEKC)

We live in an increasingly connected world and the vast majority of us are employed at institutions diligently working to extend global outreach efforts. The international impact on institutions in NASPA Region IV-W states is immense. [For rest of Blog, click here.](#)



## WHAT'S NEW WITH PROFESSIONAL STANDARDS IN NASPA IV-W?

There has been a lot of discussion recently regarding the exclusivity and inclusivity of student groups on campuses with regards to accepting members. My first instinct is that groups by being inclusive could be diluted, as in, if groups were open to all, there is a sense of loss of purpose in the group. [For rest of Blog, click here.](#)

→



## KC SPOTLIGHT - PARENT AND FAMILY RELATIONS (PFRKC)

As a parent of a college student and a non-traditional student myself, it has been exciting to serve as NASPA IV-West Parent and Family Relations KC Representative and be a part of this team. [For rest of Blog, click here.](#)



/NASPA4W



@NASPA4W

*NASPA does not discriminate on the basis of race, color, national, origin, religion, sex, age, gender identity, gender expression, affectional or sexual orientation, or disability in any of its policies, programs, and services.*

*NASPA has been approved by NBCC as an Approved Continuing Education Provider, ACEP No. 05120. Programs that do not qualify for NBCC credit are clearly identified. NASPA is solely responsible for all aspects of the program.*